

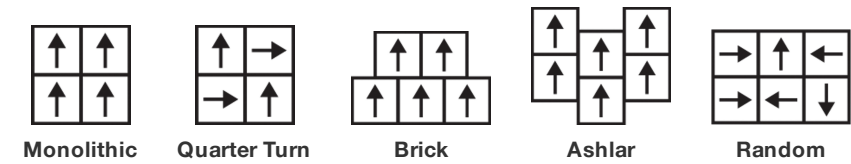
Chisel Tile

Nom De Style	Carreaux De Tapis
Collection	West Elm + Shaw Contract
Numéro De Style	5T485
Construction	Motif à Plusieurs Niveaux/Boucle De Coupe
Méthode De Teinture	100% Teint EN Solution
Endos Primaire	Synthétique
Endos Secondaire	Ecoworx® Tile
Traitements Protecteur	Protection Des Sols SSP® Shaw
Adhésif Recommandé	LokDots, 3000 Carpet Tile 4 Gallon, 3000 Carpet Tile 1 Gallon, 4151 Multi-Use Carpet Tile 4 Gallon, 5000 Carpet Tile 1 Gallon, LokWorx Adhesive Tabs, 3800 Indoor Outdoor Carpet Tile 4 Gallon or 5000 Carpet Tile 4 Gallon

	u.s.	metric
Dimensions Du Produit	24 in x 24 in	61 cm x 61 cm
Surface Par Carton	48 ft²	4.46 m²
Pièces Par Carton	12 pcs	
Jauge	1/10 in	39.4 per 10 cm
Compte De Mailles	7.0 per in	28.5 per 10 cm
Épaisseur Fini	0.167 in	4.24 mm
Densité	5820 oz/yd³	0.215 g/cm³
Poids De La Fibre Touffetée	0.326 in	8.28 mm
Poids De La Fibre Touffetée	27 oz/yd²	915.5 g/m²



Méthodes d'Installation Conseillées



Spécifications Du Rendement + Tests Et Essai

Essai Au Panneau Radiant (Astm E648)	Class I
Densité Du Fumée	Less Than 450
Statique	Less Than 3.5 kv
Label Cri Green Label Plus (Glp)	USA GLP9968 China GLP1263
Inflammabilité	Pass*
Ada Conformité	≥0.6, conforme au coefficient de frottement statique pour les surfaces de passage et d'accessibilité simplifiée (ADA).***
Test Reports may be included or listed by the manufacturing/inventory style number as opposed to the noted selling style number.	

Garanties

Commerciale Limitée

Coordination Des Produits

Carpet Tile: **Stonework Tile, Grit Tile, Zest Tile, Zeal Tile, Spark Tile**
Broadloom: **Verve, Colca, Kista By Lindsay Stead, Stone, Flame, Shale, Diamonds**

Attributs + Certifications

Certifications Below Apply Exclusively To The Carpet Tile Rug Itself And Not The Lokworx Tabs Adhesive

Health & Wellbeing

Material Ingredient Transparency	Cradle to Cradle Certified® Silver Level (Version 4.0) Health Product Declaration (HPD) Divulcation De 1 000 ppm Living Building Challenge (LBC) Exempt De Produits Chimiques De La Liste Rouge Declare Conforme LBC Declare Conforme LBC NSF 140 or CRI Green Label Plus (GLP) GLP9968
Indoor Air Quality	

Climate Impact

Environmental Product Declaration (EPD)	Certifié Par Une Tierce Partie Conformément Aux Normes ISO 14044, ISO 14025 Et EN 15804
Embodied Carbon (Cradle to Gate)	3.89 kg CO₂/m²
Life-Cycle Carbon Emissions	Low Embodied Carbon
Total Recycled Content	60% (Pre-Consumer 60% Post-Consumer 0%)
Product Packaging	100% Recyclable

Global Product Assessment

Singapore Green Label | Agréé
CE Marking (EN 14041) | Certifié Par Un Tiers
Environmental Guarantee* | Re[turn] Reclamation Program* | Through Our Environmental Guarantee, Shaw Pledges to Transport And Recycle Any Ecoworx Carpet.
Country of Origin | USA & China**

Well V2 Contribution Credit

X08 Réduction des matières dangereuses Partie 1 : Optimisation des limites des matières dangereuses – 1 pt	C2C Silver Level (Version 4.0)
X10 Réduction des composés volatils Partie 1 (A) : Gérer l'optimisation des composés organiques volatils (COV) - 1 pt	C2C Silver Level (Version 4.0)
X11 Contrôle des émissions à long terme Partie 2 : Optimisation des revêtements de sol – 1 pt	Green Label Plus Certification: GLP9968
X13 Enhanced Material Precaution Part 1: Select Optimized Materials Optimization - max 2 pts	C2C Silver Level (Version 4.0)
X14 Transparence des matériaux Partie 1 : Promouvoir l'optimisation de la divulgation des ingrédients - max 2 pts	C2C Silver Level (Version 4.0)

Contribution Au Certificat Vert Leed

- « Crédit MR : Divulcation et optimisation des produits de construction
- « Crédit MR : Divulcation et optimisation des produits de construction
- « Crédit MR : Divulcation et optimisation des produits de construction
- « Crédit MR : Divulcation et optimisation des produits de construction

Crédit EQ : matériaux faibles émissions

MR Credit: Interiors Life-Cycle Impact Reduction
Option 3: Design for Flexibility

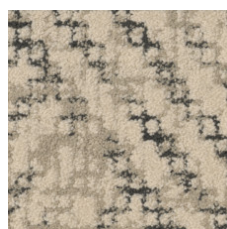
Available Colorways



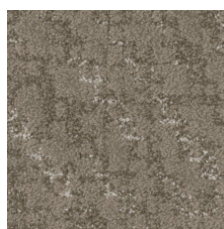
Marble 84100
LRV 44.1 | L* 72.31



Granite 84105
LRV 21.6 | L* 53.56



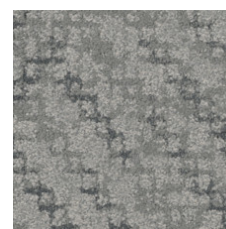
Pebble 84111
LRV 33 | L* 64.16



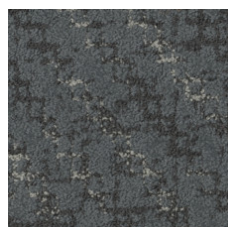
Clay 84506
LRV 17.2 | L* 48.5



Slate 84518
LRV 13.6 | L* 43.68



Mineral 84535
LRV 23.5 | L* 55.57



Graphite 84580
LRV 9.3 | L* 36.6



Flint 84761
LRV 7.6 | L* 33.17

Informations Supplémentaires

* To learn more about the recyclability of our products and our re[TURN], please visit shawcontract.com/sustainability.

**Meets or exceeds all local and national regulations in country of manufacture.

***This carpet is manufactured to be ADA compliant, but to be fully ADA compliant, the end-user must ensure the carpet is adhered to the floor and installed as outlined in the ADA standards.

[Installation Guidelines](#)

[Maintenance Guidelines](#)

Specifications are subject to nominal manufacturing variance. Material supply and/or manufacturing processes may necessitate changes without notice.

This product is an exclusive design and may not be duplicated in any manner. Use of this design in the creation of another product design is also strictly prohibited.

Visit shawcontract.com/testing for more information.



PVC-Free

Corporate Headquarters +1 800 257 7429 | +1 706 532 7984 | Atlanta +1 404 853 7429 | Bengaluru +91 80 6773 0202 | Beijing +86 10 6568 588 | Chicago +1 312 467 1331 | Dubai +971 4 584 6956 | Hong Kong +852 2623 0371 | London +44 207 961 4120 | Los Angeles +1 800 233 1614 | Melbourne +61 3 9939 8543 | Mexico City +55 5010 7600 | Mumbai +91 22 6284 5050 | Nantong +86 400 800 7429 | New York +1 212 953 7429 | Paris +33 (0) 1 81 22 44 39 | San Francisco +1 415 955 1920 | Shanghai +86 21 3338 4000 | Singapore +65 6733 1811 | Sydney +61 800 556 302

© 2025 Shaw Industries Group, Inc., a Berkshire Hathaway Company
June 7, 2025

3 of 3