

Spark Tile

製品型	Carpet Tile	
コレクション	West Elm + Shaw Contract	
スタイルナンバー	5T489	
建設	マルチレベルパターンループ	
ファイバ	Ecosolution Q100™ Nylon	
染色法	100% 原液着色	
一次バックキング	合成	
二次バックキング	Ecoworx® タイル	
保護治療	SSP@shaw 土壌保護保証	
推奨接着剤	LokDots, 3000 Carpet Tile 1 Gallon, 4151 Multi-Use Carpet Tile 4 Gallon, 5000 Carpet Tile 1 Gallon, LokWorx Adhesive Tabs, 3800 Indoor Outdoor Carpet Tile 4 Gallon, 5000 Carpet Tile 4 Gallon or 3000 Carpet Tile 4 Gallon	
	u.s.	metric
商品のサイズ	24 in x 24 in	61 cm x 61 cm
ボックスあたりの面積	48 ft²	4.46 m²
ボックスあたりの個数	12 pcs	
ゲージ	1/10 in	39.4 per 10 cm
ステッチ	7.0 per in	28.5 per 10 cm
完成した杭の厚さ	0.143 in	3.63 mm
平均密度	6545 oz/yd³	0.242 g/cm³
総厚	0.303 in	7.7 mm
房状の重量	26 oz/yd²	881.5 g/m²



推奨インストール方法



データ + テスト

放射パネル (astm E648)	Class I
Nbs煙	Less Than 450
静電気の傾向	Less Than 3.5 kv
Cri Green Label Plus (glp)	GLP9968
錠剤テスト	Pass*
Adaコンプライアンス	>0.6、ADA 歩行面およびアクセス可能ルート用推奨静摩擦係数の基準に合致***
Test Reports may be included or listed by the manufacturing/inventory style number as opposed to the noted selling style number.	

保証

生涯商用限定保証

コーディネート商品

Carpet Tile: **Stonework Tile, Chisel Tile, Grit Tile, Zest Tile, Zeal Tile**

属性+認定

Certifications Below Apply Exclusively To The Carpet Tile Rug Itself And Not The Lokworx Tabs Adhesive

Health & Wellbeing

Material Ingredient Transparency

Cradle to Cradle Certified® | Silver Level (Version 4.0)
Health Product Declaration (HPD) | 1,000 ppm 開示
Living Building Challenge (LBC) | レッドリスト記載化学物質無配合
Declare | LBC 準拠
NSF 140 | ゴールド
Greenhealth Approved | Yes
CRI Green Label Plus (GLP) | GLP9968

Indoor Air Quality

Climate Impact

Environmental Product Declaration (EPD)

ISO14044、ISO14025 および EN15804 に基づく 第三者認証取得

Embodied Carbon (Cradle to Gate)

3.87 kg CO₂/m²

Life-Cycle Carbon Emissions

Carbon Neutral

Total Recycled Content

60% (Pre-Consumer 60% | Post-Consumer 0%)

Product Packaging

100% リサイクル可能

Global Product Assessment

Singapore Green Label | 認証取得
CE Marking (EN 14041) | 第三者認証取得
Environmental Guarantee* | Re[turn] Reclamation Program* | Through Our Environmental Guarantee, Shaw Pledges to Transport And Recycle Any Ecoworx Carpet.
Country of Origin** | Imported

グリーンリード貢献クレジット

MRクレジット：製品の開示と最適化の構築
環境製品宣言-オプション1：環境製品宣言 (EPD)

3rd Party Certified in Accordance with ISO14044, ISO14025 & EN15804

MRクレジット：製品の開示と最適化の構築
材料成分-オプション1：材料成分レポート

C2C Silver Level (Version 4.0) or HPD (Version 2.1)

MRクレジット：製品の開示と最適化の構築
材料成分-オプション2：材料成分の最適化

C2C Silver Level (Version 4.0)

MR Credit: Building Product Disclosure and Optimization
Sourcing of Raw Materials - Option 2: Leadership Extraction Practices

Environmental Guarantee: Re[turn] Reclamation Program* | Through Our Environmental Guarantee, Shaw Pledges to Transport And Recycle Any Ecoworx Carpet.

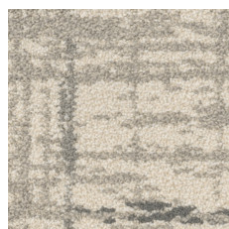
EQクレジット：低排出材料
オプション1：製品カテゴリの計算

Green Label Plus Certification: GLP9968

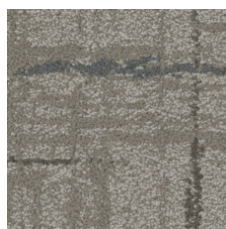
MR Credit: Interiors Life-Cycle Impact Reduction
Option 3: Design for Flexibility

Ecoworx Tile with Lokdots Installation System

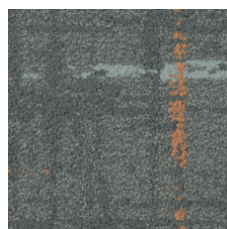
Available Colorways



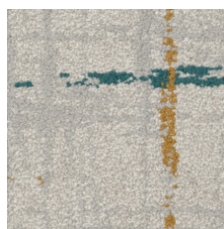
Flair 87100
LRV 47.5 | L* 74.49



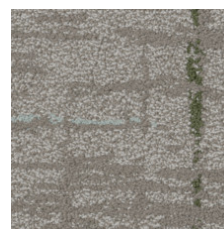
Vitality 87105
LRV 22 | L* 54.06



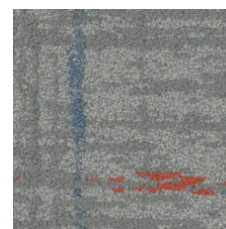
Flourish-Color 87326
LRV 13.2 | L* 43



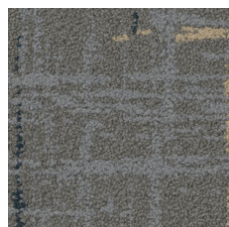
Vibrance-Color 87327
LRV 43.5 | L* 71.91



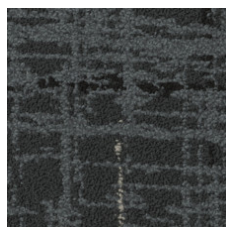
Vitality-Color 87375
LRV 20.7 | L* 52.6



Moxie-Color 87411
LRV 25.9 | L* 57.96



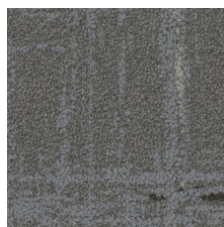
Brio-Color 87485
LRV 13.8 | L* 44.02



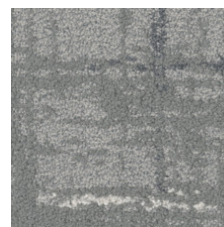
Gusto 87500
LRV 5.8 | L* 28.97



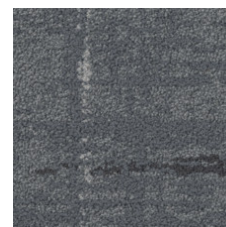
Vibrance 87510
LRV 45.2 | L* 73.01



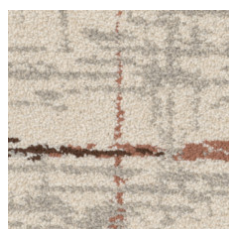
Brio 87518
LRV 14.1 | L* 44.41



Moxie 87535
LRV 23.8 | L* 55.91



Flourish 87580
LRV 12 | L* 41.29



Flair-Color 87675
LRV 46.1 | L* 43.6

追加情報

* To learn more about the recyclability of our products and our re[TURN], please visit shawcontract.com/sustainability.

**Meets or exceeds all local and national regulations in country of manufacture.

***This carpet is manufactured to be ADA compliant, but to be fully ADA compliant, the end-user must ensure the carpet is adhered to the floor and installed as outlined in the ADA standards.

[Installation Guidelines](#)

[Maintenance Guidelines](#)

Specifications are subject to nominal manufacturing variance. Material supply and/or manufacturing processes may necessitate changes without notice.

This product is an exclusive design and may not be duplicated in any manner. Use of this design in the creation of another product design is also strictly prohibited.

Visit shawcontract.com/testing for more information.



Corporate Headquarters +1 800 257 7429 | +1 706 532 7984 | Atlanta +1 404 853 7429 | Bengaluru +91 80 6773 0202 | Beijing +86 10 6568 588 | Chicago +1 312 467 1331 | Dubai +971 4 584 6956 | Hong Kong +852 2623 0371 | Latin America (Miami) +1 305 827 5912 | London +44 207 961 4120 | Los Angeles +1 800 233 1614 | Melbourne +61 3 9939 8543 | Mexico City +55 5010 7600 | Mumbai +91 22 6284 5050 | Nantong +86 400 800 7429 | New York +1 212 953 7429 | Paris +33 (0) 1 81 22 44 39 | San Francisco +1 415 955 1920 | Santiago +562 2431 5000 x 550 | São Paulo +55 11 3071 1702 | Shanghai +86 21 3338 4000 | Singapore +65 6733 1811 | Sydney +61 800 556 302