

Casa Cn Tile

Product Type	Carpet Tile	
Collection	Cultura	
Style Number	5T611	
Construction	Multi-Level Pattern Loop	
Fibre	Ecosolution Q100™ Nylon	
Dye Method	100% Solution Dyed	
Primary Backing	Synthetic	
Secondary Backing	Ecoworx® Tile	
Protective Treatments	SSP® Shaw Soil Protection	
	u.s.	metric
Product Size	18 in x 36 in	46 cm x 91 cm
Area Per Box	45 ft²	4.18 m²
Pieces Per Box	10 pcs	
Gauge	1/12 in	47.2 per 10 cm
Stitches	9.0 per in	35.0 per 10 cm
Finished Pile Thickness	0.107 in	2.72 mm
Average Density	6056 oz/yd³	0.224 g/cm³
Total Thickness	0.277 in	7.04 mm
Tufted Weight	18 oz/yd²	610.3 g/m²



Recommended Installation Method



Data + Testing

Radiant Panel (Astm E648)	Class I
Nbs Smoke	Less Than 450
Electrostatic Propensity	Less Than 3.5 kv
Pill Test	Pass*
Ada Compliance	>0.6, Meets the recommended static coefficient of friction for ADA walking surfaces and accessible routes***

Warranties

Lifetime Commercial Limited

Coordinating Products

Carpet Tile: **Alban Cn Tile, Local Cn Tile**

Attributes + Certifications

Certifications Below Apply Exclusively To The Carpet Tile Rug Itself And Not The Lokworx Tabs Adhesive

Health & Wellbeing

Material Ingredient Transparency

Cradle to Cradle Certified® | Silver Level (Version 4.0)
Health Product Declaration (HPD) | 1,000 ppm Disclosure
Living Building Challenge (LBC) | Free of Red List Chemicals
NSF 140 | Gold
Greenhealth Approved | Yes

Climate Impact

Environmental Product Declaration (EPD)

Total Recycled Content

Product Packaging

3rd Party Certified in Accordance with ISO14044, ISO14025 & EN15804
57% (Pre-Consumer 57% | Post-Consumer 0%)
100% Recyclable

Global Product Assessment

Singapore Green Label | Certified
CE Marking (EN 14041) | 3rd Party Certified
Environmental Guarantee* | Re[turn] Reclamation Program* | Through Our Environmental Guarantee, Shaw Pledges to Transport And Recycle Any Ecoworx Carpet.
Country of Origin** | Imported

Leed Contribution Credit

MR Credit: Building Product Disclosure and Optimization
Environmental Product Declarations - Option 1: Environmental Product Declaration (EPD)

3rd Party Certified in Accordance with ISO14044, ISO14025 & EN15804

MR Credit: Building Product Disclosure and Optimization
Material Ingredients - Option 1: Material Ingredient Reporting

C2C Silver Level (Version 4.0) or HPD (Version 2.1)

MR Credit: Building Product Disclosure and Optimization
Material Ingredients - Option 2: Material Ingredient Optimization

C2C Silver Level (Version 4.0)

MR Credit: Building Product Disclosure and Optimization
Sourcing of Raw Materials - Option 2: Leadership Extraction Practices

Environmental Guarantee: Re[turn] Reclamation Program* | Through Our Environmental Guarantee, Shaw Pledges to Transport And Recycle Any Ecoworx Carpet.

EQ Credit: Low Emitting Materials
Option 1: Product Category Calculations

Green Label Plus Certification: GLP9968

MR Credit: Interiors Life-Cycle Impact Reduction
Option 3: Design for Flexibility

Ecoworx Tile with Lokdots Installation System

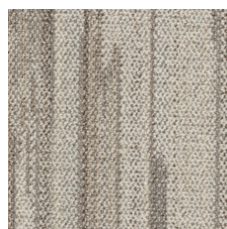
Available Colorways



Cobblestone 25100



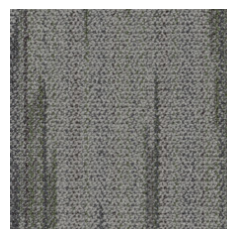
Native 25105



Maiz 25111



Vibrant Maiz 25210



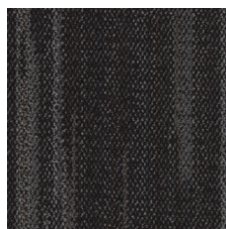
Vibrant Agave 25375



Vibrant Mole 25485



Vibrant Tejate 25486



Mole 25505



Tejate 25518



Agave 25535



Immerse 25555



Retreat 25580



Vibrant Native 25675

Additional Information

* To learn more about the recyclability of our products and our re[TURN], please visit shawcontract.com/sustainability.

**Meets or exceeds all local and national regulations in country of manufacture.

***This carpet is manufactured to be ADA compliant, but to be fully ADA compliant, the end-user must ensure the carpet is adhered to the floor and installed as outlined in the ADA standards.

[Installation Guidelines](#)

[Maintenance Guidelines](#)

Specifications are subject to nominal manufacturing variance. Material supply and/or manufacturing processes may necessitate changes without notice.

This product is an exclusive design and may not be duplicated in any manner. Use of this design in the creation of another product design is also strictly prohibited.

Visit shawcontract.com/testing for more information.



Corporate Headquarters +1 800 257 7429 | +1 706 532 7984 | Atlanta +1 404 853 7429 | Bengaluru +91 80 6773 0202 | Beijing +86 10 6568 588 | Chicago +1 312 467 1331 | Dubai +971 4 584 6956 | Hong Kong +852 2623 0371 | Latin America (Miami) +1 305 827 5912 | London +44 207 961 4120 | Los Angeles +1 800 233 1614 | Melbourne +61 3 9939 8543 | Mexico City +55 5010 7600 | Mumbai +91 22 6284 5050 | Nantong +86 400 800 7429 | New York +1 212 953 7429 | Paris +33 (0) 1 81 22 44 39 | San Francisco +1 415 955 1920 | Santiago +562 2431 5000 x 550 | São Paulo +55 11 3071 1702 | Shanghai +86 21 3338 4000 | Singapore +65 6733 1811 | Sydney +61 800 556 302