

## Drop Stitch Accent Cn 9x36

상품 유형	Carpet Tile
수집	Connected Threads
스타일 번호	5T635
구성	다중 레벨 루프식
섬유	Ecosolution Q100™ Nylon
염료 방법	100% 원착 염색
기본 백업	합성
보조 백업	Ecoworx® 타일
보호 처리	SSP® Shaw 휴먼지 보호

	u.s.	metric
제품 크기	9 in x 36 in	23 cm x 91 cm
상자 당 면적	45 ft <sup>2</sup>	4.18 m <sup>2</sup>
상자 당 조각	20 pcs	
계량기	1/12 in	47.2 per 10 cm
스티치	9.0 per in	35.0 per 10 cm
완성 된 말뚝 두께	0.097 in	2.46 mm
평균 밀도	5567 oz/yd <sup>3</sup>	0.206 g/cm <sup>3</sup>
총 두께	0.247 in	6.27 mm
슬을다는 무게	15 oz/yd <sup>2</sup>	508.6 g/m <sup>2</sup>



### 데이터 + 테스트

복사 패널 (Astm E648)	Class I
Nbs 연기	Less Than 450
정전기 성향	Less Than 3.5 kv
Ada 준수	0.6 이상, ADA 보행 노면과 이용 가능한 경로의 권장 마찰계수 충족***

### 속성 + 인증

Certifications Below Apply Exclusively To The Carpet Tile Rug Itself And Not The Lokworx Tabs Adhesive

Climate Impact

Total Recycled Content

55% (Pre-Consumer 55% | Post-Consumer 0%)

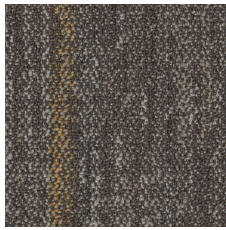
Global Product Assessment

Country of Origin\*\* | Imported

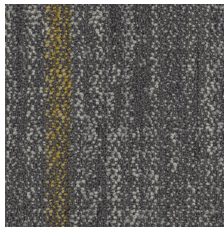
### 코디네이팅 제품

Carpet Tile: **Drop Stitch Cn 9x36, Knitted Cn 9x36, Pleated Cn 9x36**

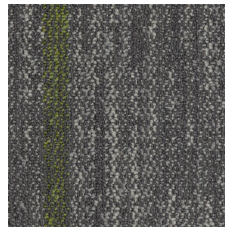
### Available Colorways



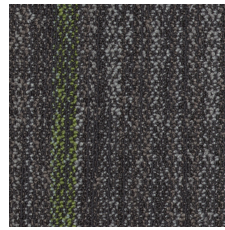
Gold 34210



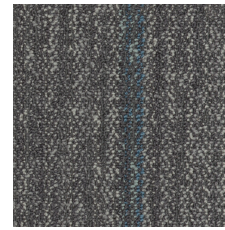
Citron 34211



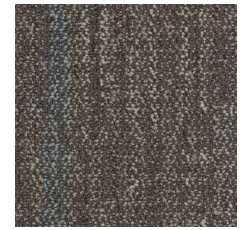
Green 34326



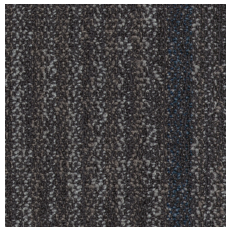
Lime Green 34327



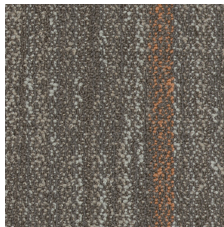
Light Blue 34411



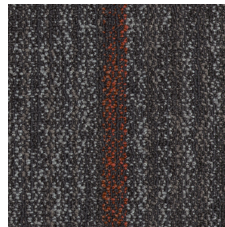
Aqua 34412



Blue 34485



Apricot 34675



Ember 34870

### 추가 정보

\*\*\*This carpet is manufactured to be ADA compliant, but to be fully ADA compliant, the end-user must ensure the carpet is adhered to the floor and installed as outlined in the ADA standards.

Specifications are subject to nominal manufacturing variance. Material supply and/or manufacturing processes may necessitate changes without notice.

This product is an exclusive design and may not be duplicated in any manner. Use of this design in the creation of another product design is also strictly prohibited.

Visit [shawcontract.com/testing](http://shawcontract.com/testing) for more information.