

## Knitted Cn 9x36

製品型	<b>Carpet Tile</b>	
コレクション	<b>Connected Threads</b>	
スタイルナンバー	<b>5T636</b>	
建設	<b>マルチレベルパターンループ</b>	
染色法	<b>100% 原液着色</b>	
一次バックイング	<b>合成</b>	
二次バックイング	<b>Ecoworx®タイル</b>	
保護治療	<b>SSP®shaw 土壌保護保証</b>	
	u.s.	metric
商品のサイズ	<b>9 in x 36 in</b>	<b>23 cm x 91 cm</b>
ボックスあたりの面積	<b>45 ft<sup>2</sup></b>	<b>4.18 m<sup>2</sup></b>
ボックスあたりの個数	<b>20 pcs</b>	
ゲージ	<b>1/12 in</b>	<b>47.2 per 10 cm</b>
ステッチ	<b>9.0 per in</b>	<b>35.0 per 10 cm</b>
完成した杭の厚さ	<b>0.089 in</b>	<b>2.26 mm</b>
平均密度	<b>6067 oz/yd<sup>3</sup></b>	<b>0.224 g/cm<sup>3</sup></b>
総厚	<b>0.239 in</b>	<b>6.07 mm</b>
房状の重量	<b>15 oz/yd<sup>2</sup></b>	<b>508.6 g/m<sup>2</sup></b>



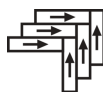
## 推奨インストール方法



Ashlar



Brick



Herringbone



Monolithic



Stagger

## データ + テスト

放射パネル (astm E648)

Class I

Nbs煙

Less Than 450

静電気の傾向

Less Than 3.5 kv

Cri Green Label Plus (glp)

GLP1263

Adaコンプライアンス

&gt;0.6、ADA 歩行面およびアクセス可能ルート用推奨静摩擦係数の基準に合致\*\*\*

Test Reports may be included or listed by the manufacturing/inventory style number as opposed to the noted selling style number.

## 保証

生涯商用限定保証

コーディネート商品

Carpet Tile: **Drop Stitch Cn 9x36, Drop Stitch Accent Cn 9x36, Pleated Cn 9x36**

属性+認定

Certifications Below Apply Exclusively To The Carpet Tile Rug Itself And Not The Lokworx Tabs Adhesive

Health & Wellbeing

Material Ingredient Transparency

Cradle to Cradle Certified® | Silver Level (Version 4.0)  
Health Product Declaration (HPD) | 1,000 ppm 開示  
Living Building Challenge (LBC) | レッドリスト記載化学物質無配合  
Declare | LBC 準拠  
NSF 140 | ゴールド  
CRI Green Label Plus (GLP) | GLP1263

Indoor Air Quality

Climate Impact

Environmental Product Declaration (EPD)

ISO 14044、ISO 14025 および EN15804 に基づく 第三者認証取得  
4.4 kg CO<sub>2</sub>/m<sup>2</sup>

Embodied Carbon (Cradle to Gate)

Carbon Neutral

Life-Cycle Carbon Emissions\*\*\*\*

55% (Pre-Consumer 55% | Post-Consumer 0%)

Total Recycled Content

100% リサイクル可能

Product Packaging

Global Product Assessment

Singapore Green Label | 認証取得  
CE Marking (EN 14041) | 第三者認証取得  
Environmental Guarantee\* | Re[turn] Reclamation Program\* | Through Our Environmental Guarantee, Shaw Pledges to Transport And Recycle Any Ecoworx Carpet.  
Country of Origin\*\* | 中国

Well V2 Contribution Credit

X08 Hazardous Material Reduction Part 1: Limit Hazardous Materials Optimization – 1 pt

C2C Silver Level (Version 4.0)

X10 Volatile Compound Reduction Part 1 (A): Manage Volatile Organic Compounds (VOCs) Optimization – 1 pt

C2C Silver Level (Version 4.0)

X11 Long Term Emissions Control Part 2: Flooring Optimization – 1 pt

Green Label Plus Certification: GLP9968

X13 Enhanced Material Precaution Part 1: Select Optimized Materials Optimization – max 2 pts

C2C Silver Level (Version 4.0)

X14 Material Transparency Part 1: Promote Ingredient Disclosure Optimization – max 2 pts

C2C Silver Level (Version 4.0)

グリーンリード貢献クレジット

MRクレジット：製品の開示と最適化の構築  
環境製品宣言-オプション1：環境製品宣言（EPD）

3rd Party Certified in Accordance with ISO14044, ISO14025 & EN15804

MRクレジット：製品の開示と最適化の構築  
材料成分-オプション1：材料成分レポート

C2C Silver Level (Version 4.0) or HPD (Version 2.1)

MRクレジット：製品の開示と最適化の構築  
材料成分-オプション2：材料成分の最適化

C2C Silver Level (Version 4.0)

MRクレジット：製品の開示と最適化の構築  
原材料の調達-オプション2：リーダーシップの抽出実践

Environmental Guarantee: Re[turn] Reclamation Program\* | Through Our Environmental Guarantee, Shaw Pledges to Transport And Recycle Any Ecoworx® Carpet.

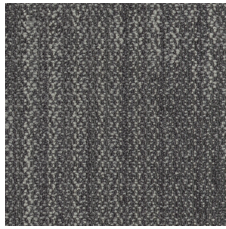
EQクレジット：低排出材料  
オプション1：製品カテゴリの計算

Green Label Plus Certification: GLP9968

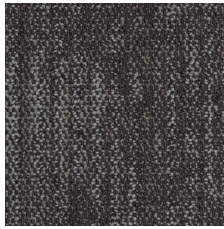
MR Credit: Interiors Life-Cycle Impact Reduction  
Option 3: Design for Flexibility

Ecoworx® Tile with Lokdots Installation System

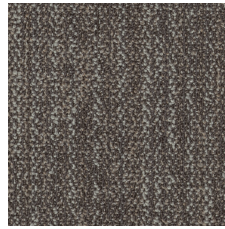
## Available Colorways



Threaded 34481



Mended 34500



Vintage 34760

## 追加情報

\* To learn more about the recyclability of our products and our re[TURN], please visit [shawcontract.com/sustainability](https://shawcontract.com/sustainability).

\*\*Meets or exceeds all local and national regulations in country of manufacture.

\*\*\*This carpet is manufactured to be ADA compliant, but to be fully ADA compliant, the end-user must ensure the carpet is adhered to the floor and installed as outlined in the ADA standards.

\*\*\*\*Life-Cycle is modeled from US manufacturing.

[Installation Guidelines](#)

[Maintenance Guidelines](#)

Specifications are subject to nominal manufacturing variance. Material supply and/or manufacturing processes may necessitate changes without notice.

This product is an exclusive design and may not be duplicated in any manner. Use of this design in the creation of another product design is also strictly prohibited.

Visit [shawcontract.com/testing](https://shawcontract.com/testing) for more information.



**PVC-Free**