

## Knitted Cn 9x36

상품 유형	<b>Carpet Tile</b>
수집	<b>Connected Threads</b>
스타일 번호	<b>5T636</b>
구성	<b>다중 레벨 루프식</b>
염료 방법	<b>100% 원착 염색</b>
기본 백업	<b>합성</b>
보조 백업	<b>Ecoworx® 타일</b>
보호 처리	<b>SSP® Shaw 휴먼지 보호</b>

	u.s.	metric
제품 크기	<b>9 in x 36 in</b>	<b>23 cm x 91 cm</b>
상자 당 면적	<b>45 ft<sup>2</sup></b>	<b>4.18 m<sup>2</sup></b>
상자 당 조각	<b>20 pcs</b>	
계량기	<b>1/12 in</b>	<b>47.2 per 10 cm</b>
스티치	<b>9.0 per in</b>	<b>35.0 per 10 cm</b>
완성 된 말뚝 두께	<b>0.089 in</b>	<b>2.26 mm</b>
평균 밀도	<b>6067 oz/yd<sup>3</sup></b>	<b>0.224 g/cm<sup>3</sup></b>
총 두께	<b>0.239 in</b>	<b>6.07 mm</b>
슬을다는 무게	<b>15 oz/yd<sup>2</sup></b>	<b>508.6 g/m<sup>2</sup></b>



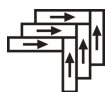
## 권장 설치 방법



Ashlar



Brick



Herringbone



Monolithic



Stagger

## 데이터 + 테스트

복사 패널 (Astm E648)	<b>Class I</b>
Nbs 연기	<b>Less Than 450</b>
정전기 성향	<b>Less Than 3.5 kv</b>
Cri 그린 라벨 플러스 (Glp)	<b>GLP1263</b>
Ada 준수	<b>0.6 이상, ADA 보행 노면과 이용 가능한 경로의 권장 마찰계수 충족***</b>

## 보증

### 중신 상용 제한

## 코디네이팅 제품

Carpet Tile: **Drop Stitch Cn 9x36, Drop Stitch Accent Cn 9x36, Pleated Cn 9x36**

## 속성 + 인증

Certifications Below Apply Exclusively To The Carpet Tile Rug Itself And Not The Lokworx Tabs Adhesive

## Health &amp; Wellbeing

Material Ingredient Transparency

**Cradle to Cradle Certified® | Silver Level (Version 4.0)**  
**Health Product Declaration (HPD) | 1,000ppm 노출**  
**Living Building Challenge (LBC) | 적색목록 화학물질 없음**  
**Declare | LBC 규격**  
**NSF 140 | 골드**  
**CRI Green Label Plus (GLP) | GLP1263**

Indoor Air Quality

## Climate Impact

Environmental Product Declaration (EPD)

**ISO 14044, ISO 14025 및 EN15804에 따라 타사 인증 획득**

Embodied Carbon (Cradle to Gate)

**4.4 kg CO<sub>2</sub>/m<sup>2</sup>**

Life-Cycle Carbon Emissions\*\*\*\*

**Carbon Neutral**

Total Recycled Content

**55% (Pre-Consumer 55% | Post-Consumer 0%)**

Product Packaging

**100% 재활용 가능**

## Global Product Assessment

**Singapore Green Label | 인증****CE Marking (EN 14041) | 타사 인증 획득**

**Environmental Guarantee\* | Re[turn] Reclamation Program\* | Through**  
**Our Environmental Guarantee, Shaw Pledges to Transport And**  
**Recycle Any Ecoworx Carpet.**

**Country of Origin\*\* | Imported**

## Well V2 Contribution Credit

X08 Hazardous Material Reduction Part 1: Limit Hazardous Materials Optimization – 1 pt

**C2C Silver Level (Version 4.0)**

X10 Volatile Compound Reduction Part 1 (A): Manage Volatile Organic Compounds (VOCs) Optimization – 1 pt

**C2C Silver Level (Version 4.0)**

X11 Long Term Emissions Control Part 2: Flooring Optimization – 1 pt

**Green Label Plus Certification: GLP9968**

X13 Enhanced Material Precaution Part 1: Select Optimized Materials Optimization – max 2 pts

**C2C Silver Level (Version 4.0)**

X14 Material Transparency Part 1: Promote Ingredient Disclosure Optimization – max 2 pts

**C2C Silver Level (Version 4.0)**

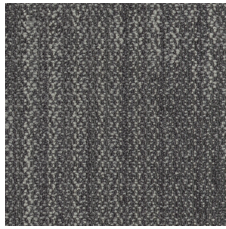
## 녹색의 공헌 기여 크레딧

MR 크레딧 : 제품 공개 및 최적화 구축  
환경 제품 선언-옵션 1 : 환경 제품 선언 (EPD)**3rd Party Certified in Accordance with ISO14044, ISO14025 & EN15804**MR 크레딧 : 제품 공개 및 최적화 구축  
재료 성분-옵션 1 : 재료 성분보고**C2C Silver Level (Version 4.0) or HPD (Version 2.1)**MR 크레딧 : 제품 공개 및 최적화 구축  
재료 성분-옵션 2 : 재료 성분 최적화**C2C Silver Level (Version 4.0)**MR 크레딧 : 제품 공개 및 최적화 구축  
원료 소싱-옵션 2 : 리더십 추출 사례

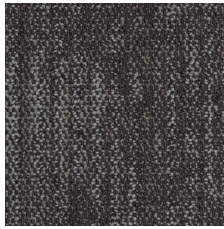
**Environmental Guarantee: Re[turn] Reclamation Program\* | Through**  
**Our Environmental Guarantee, Shaw Pledges to Transport And**  
**Recycle Any Ecoworx® Carpet.**

**Green Label Plus Certification: GLP9968**EQ 크레딧 : 저 발광 재료  
옵션 1 : 제품 범주 계산**Ecworx® Tile with Lokdots Installation System**MR Credit: Interiors Life-Cycle Impact Reduction  
Option 3: Design for Flexibility

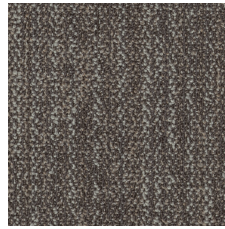
## Available Colorways



Threaded 34481



Mended 34500



Vintage 34760

## 추가 정보

\* To learn more about the recyclability of our products and our re[TURN], please visit [shawcontract.com/sustainability](https://shawcontract.com/sustainability).

\*\*Meets or exceeds all local and national regulations in country of manufacture.

\*\*\*This carpet is manufactured to be ADA compliant, but to be fully ADA compliant, the end-user must ensure the carpet is adhered to the floor and installed as outlined in the ADA standards.

\*\*\*\*Life-Cycle is modeled from US manufacturing.

[Installation Guidelines](#)

[Maintenance Guidelines](#)

Specifications are subject to nominal manufacturing variance. Material supply and/or manufacturing processes may necessitate changes without notice.

This product is an exclusive design and may not be duplicated in any manner. Use of this design in the creation of another product design is also strictly prohibited.

Visit [shawcontract.com/testing](https://shawcontract.com/testing) for more information.



**PVC-Free**