

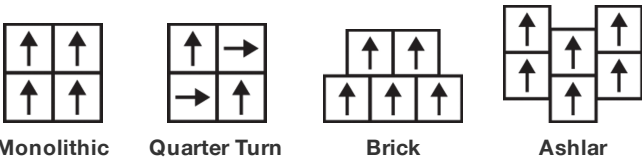
Metal Edge Tile

Nom De Style	Carreaux De Tapis
Collection	Poetic Form
Numéro De Style	5T620
Construction	Motif à Plusieurs Niveaux/Boucle De Coupe
Fibre	Ecosolution Q100™ Nylon
Méthode De Teinture	100% Teint EN Solution
Endos Primaire	Synthétique
Endos Secondaire	Ecworx® Tile
Traitements Protecteur	Protection Des Sols SSP® Shaw
Adhésif Recommandé	LokDots, 3000 Carpet Tile 4 Gallon, 3000 Carpet Tile 1 Gallon, 4151 Multi-Use Carpet Tile 4 Gallon, 5000 Carpet Tile 1 Gallon, LokWorx Adhesive Tabs, 3800 Indoor Outdoor Carpet Tile 4 Gallon or 5000 Carpet Tile 4 Gallon

	u.s.	metric
Dimensions Du Produit	24 in x 24 in	61 cm x 61 cm
Surface Par Carton	48 ft²	4.46 m²
Pièces Par Carton	12 pcs	
Jauge	1/10 in	39.4 per 10 cm
Compte De Mailles	8.0 per in	32.5 per 10 cm
Épaisseur Fini	0.102 in	2.59 mm
Densité	9176 oz/yd³	0.34 g/cm³
Poids De La Fibre Touffetée	0.292 in	7.42 mm
Poids De La Fibre Touffetée	26 oz/yd²	881.5 g/m²



Méthodes d'Installation Conseillées



Spécifications Du Rendement + Tests Et Essai

Essai Au Panneau Radiant (Astm E648)	Class I
Densité Du Fumée	Less Than 450
Statique	Less Than 3.5 kv
Label Cri Green Label Plus (Glp)	GLP9968
Inflammabilité	Pass*
Ada Conformité	≥0.6, conforme au coefficient de frottement statique pour les surfaces de passage et d'accessibilité simplifiée (ADA).***

Test Reports may be included or listed by the manufacturing/inventory style number as opposed to the noted selling style number.

Garanties

Commerciale Limitée

Coordination Des Produits

Carpet Tile: **Essence Tile, Gilded Tile**

Attributs + Certifications

Certifications Below Apply Exclusively To The Carpet Tile Rug Itself And Not The Lokworx Tabs Adhesive

Health & Wellbeing

Material Ingredient Transparency

Cradle to Cradle Certified® | Silver Level (Version 4.0)  
Health Product Declaration (HPD) | Divulgateion De 1 000 ppm  
Living Building Challenge (LBC) | Exempt De Produits Chimiques De La  
Liste Rouge  
Declare | Conforme LBC  
NSF 140 | or  
CRI Green Label Plus (GLP) | GLP9968

Indoor Air Quality

Climate Impact

Environmental Product Declaration (EPD)

Certifié Par Une Tierce Partie Conformément Aux Normes ISO 14044,  
ISO 14025 Et EN 15804  
3.87 kg CO<sub>2</sub>/m<sup>2</sup>  
Low Embodied Carbon  
60% (Pre-Consumer 60% | Post-Consumer 0%)  
100% Recyclable

Embodied Carbon (Cradle to Gate)

Life-Cycle Carbon Emissions

Total Recycled Content

Product Packaging

Global Product Assessment

Singapore Green Label | Agréé  
CE Marking (EN 14041) | Certifié Par Un Tiers  
Environmental Guarantee\* | Re[turn] Reclamation Program\* | Through  
Our Environmental Guarantee, Shaw Pledges to Transport And  
Recycle Any Ecoworx Carpet.  
Country of Origin\*\* | Imported

Well V2 Contribution Credit

- X08 Réduction des matières dangereuses Partie 1 : Optimisation des limites des matières dangereuses – 1 pt
- X10 Réduction des composés volatils Partie 1 (A) : Gérer l'optimisation des composés organiques volatils (COV) - 1 pt
- X11 Contrôle des émissions à long terme Partie 2 : Optimisation des revêtements de sol – 1 pt
- X13 Enhanced Material Precaution Part 1: Select Optimized Materials Optimization - max 2 pts
- X14 Transparence des matériaux Partie 1 : Promouvoir l'optimisation de la divulgation des ingrédients - max 2 pts

- C2C Silver Level (Version 4.0)
- C2C Silver Level (Version 4.0)
- Green Label Plus Certification: GLP9968
- C2C Silver Level (Version 4.0)
- C2C Silver Level (Version 4.0)

## Contribution Au Certificat Vert Leed

- « Crédit MR : Divulcation et optimisation des produits de construction
- « Crédit MR : Divulcation et optimisation des produits de construction
- « Crédit MR : Divulcation et optimisation des produits de construction
- « Crédit MR : Divulcation et optimisation des produits de construction

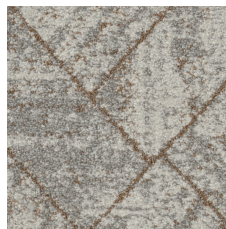
Crédit EQ : matériaux faibles émissions

MR Credit: Interiors Life-Cycle Impact Reduction  
Option 3: Design for Flexibility

## Available Colorways



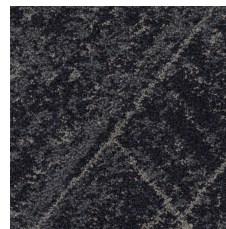
Carrara Silver 18100  
LRV 39.4 | L\* 69.01



Quartz Copper 18105  
LRV 35.1 | L\* 65.79



Crema Copper 18111  
LRV 29.5 | L\* 61.25



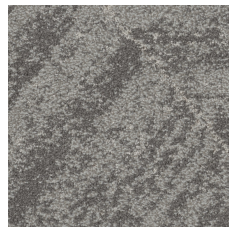
Lazurite Silver 18496  
LRV 5.5 | L\* 28.21



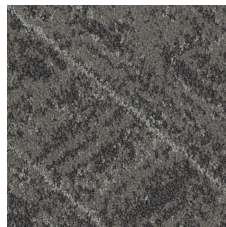
Onyx Silver 18505  
LRV 4.5 | L\* 25.41



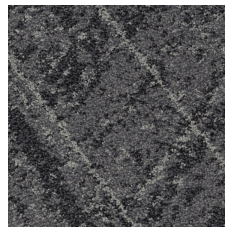
Zarci Platinum 18506  
LRV 19.1 | L\* 50.85



Emery Platinum 18515  
LRV 23.6 | L\* 55.69



Umber Palladium 18518  
LRV 11.1 | L\* 39.82



Anthracite Palladium  
18580  
LRV 8.7 | L\* 35.41

## Informations Supplémentaires

\* To learn more about the recyclability of our products and our re[TURN], please visit [shawcontract.com/sustainability](https://shawcontract.com/sustainability).

\*\*Meets or exceeds all local and national regulations in country of manufacture.

\*\*\*This carpet is manufactured to be ADA compliant, but to be fully ADA compliant, the end-user must ensure the carpet is adhered to the floor and installed as outlined in the ADA standards.

[Installation Guidelines](#)

[Maintenance Guidelines](#)

Specifications are subject to nominal manufacturing variance. Material supply and/or manufacturing processes may necessitate changes without notice.

This product is an exclusive design and may not be duplicated in any manner. Use of this design in the creation of another product design is also strictly prohibited.

Visit [shawcontract.com/testing](https://shawcontract.com/testing) for more information.



**PVC-Free**

Corporate Headquarters +1 800 257 7429 | +1 706 532 7984 | Atlanta +1 404 853 7429 | Bengaluru +91 80 6773 0202 | Beijing +86 10 6568 588 | Chicago +1 312 467 1331 | Dubai +971 4 584 6956 | Hong Kong +852 2623 0371 | London +44 207 961 4120 | Los Angeles +1 800 233 1614 | Melbourne +61 3 9939 8543 | Mexico City +55 5010 7600 | Mumbai +91 22 6284 5050 | Nantong +86 400 800 7429 | New York +1 212 953 7429 | Paris +33 (0) 1 81 22 44 39 | San Francisco +1 415 955 1920 | Shanghai +86 21 3338 4000 | Singapore +65 6733 1811 | Sydney +61 800 556 302

© 2025 Shaw Industries Group, Inc., a Berkshire Hathaway Company  
July 29, 2025

3 of 3