

Understated Ecoworx S® Tile

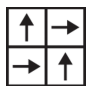
Style Number	5T647	
Collection	Creative Connections	
Product Type	Carpet Tile	
Construction	Standard	Data + Performance
Type of Manufacture	ISO 2424	tufted 1/10"   39.4 per 10cm
Aspect	ISO 2424	Multi-Level Pattern Loop
Dye Method	EN 994	100% Solution Dyed
Dimensions	EN 994	50 cm x 50 cm   20 tiles (5 m²) per box
Primary Backing	ISO 2424	Pet Non-Woven
Secondary Backing	ISO 2424	Ecoworx S® Polyolefin Plastomer
Total Thickness	ISO 1765	7.0 mm
Effective Pile Thickness	ISO 1766	2.3 mm
Total Mass	ISO 8543	2984 g/m²
Nominal Total Pile Mass	ISO 2424	762 g/m²
Effective Pile Mass	ISO 8543	291 g/m²
Pile Density	ISO 8543	0.126 g/cm³
Total Recycled Content		55% (pre-consumer 55%   post-consumer 0%)

Performance

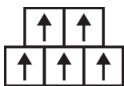
Number of Tufts	ISO 1763	124,000/m²   31.5 per 10cm
Electrostatic Propensity	ISO 6356	≤ 2.0 kv (Stroll Test)
Use Classification	EN 1307	33 Commercial Heavy
Luxury Class	EN 1307	LC1
Dimensional Stability	EN 986	≤ 0.2%
Impact Sound Insulation	ISO 10140	26 Db
Sound Absorption Classification	ISO 354/11654	0.15 αW   Class E
Thermal Resistance m² K/W	ISO 8302	0.087 M² K/W Tog 0.87
Dry Slip Resistance	ISO 13893	
Colour Fastness To Light	ISO 105-B02	>6
Flammability	EN 13501-1	Bfl-S1 (Adhered Testing)
Castor Chair	EN 985	≥2.4 Intensive USe

Lifetime Commercial Limited subject to installation in full accordance with the manufacturer's instructions and a regular effective cleaning and maintenance programme. Second location warranties are available with the use of non-adhesive IOBAC Magtabs and Tabit accessories.

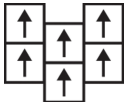
Recommended Installation Method



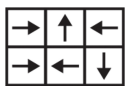
Quarter Turn



Brick



Ashlar



Random





26 dB

0.15 αw

## Coordinating Products

Carpet Tile: **Interlaced Comfortworx® Tile, Interlaced Taskworx® Tile, Interlaced Ecoworx S® Tile**

## Material Health &amp; Environmental Certifications

Certifications below apply exclusively to the carpet tile rug itself and not the LokWorx Tabs adhesive

Cradle to Cradle Certified®	<b>Silver Level (Version 3.1)</b>
Environmental Product Declaration (EPD)	<b>3rd Party Certified in Accordance with ISO14044, ISO14025 &amp; EN15804</b>
Embodied Carbon (Cradle to Gate)	<b>4.35 kg CO<sub>2</sub>/m<sup>2</sup></b>
Life-Cycle Carbon Emissions	<b>Low Embodied Carbon</b>
Environmental Guarantee*	<b>Take Back Policy Offered For All Ecoworx S® Products</b>
Country of Origin**	<b>United Kingdom</b>
BREEAM Contribution Credit	<b>Certificate of Approval Schools/Offices/Health/Industrial Shed Retail</b>

## WELL V2 Contribution Credit

X08 Hazardous Material Reduction Part 1: Limit Hazardous Materials Optimization	<b>C2C Silver Level (Version 3.1)</b>
X10 Volatile Compound Reduction Part 1 (A): Manage Volatile Organic Compounds (VOCs) Optimization	<b>C2C Silver Level (Version 3.1)</b>
X11 Long Term Emissions Control Part 2: Flooring Optimization	<b>M1&gt; Emissions Class For Building Material</b>
X13 Enhanced Material Precaution Part 1: Select Optimized Materials Optimization	<b>C2C Silver Level (Version 3.1)</b>
X14 Material Transparency Part 1: Promote Ingredient Disclosure Optimization	<b>C2C Silver Level (Version 3.1)</b>

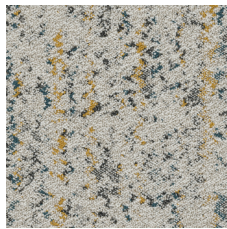
## Leed v4 Contribution Credits

MR Credit: Building Product Disclosure and Optimization Material Ingredients - Option 1: Material Ingredient Reporting	<b>C2C Silver Level (Version 3.1)</b>
MR Credit: Building Product Disclosure and Optimization Material Ingredients - Option 2: Material Ingredient Optimization	<b>C2C Silver Level (Version 3.1)</b>

## Memberships

WGBC Framework	<b>WGBC Framework</b>
UKGBC	<b>UKGBC</b>
Emirates Green Building Council	<b>Emirates Green Building Council</b>
Chemsec	<b>Chemsec</b>

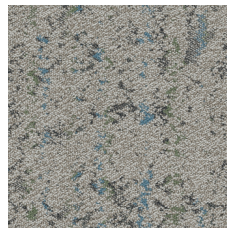
## Light Reflectance Value



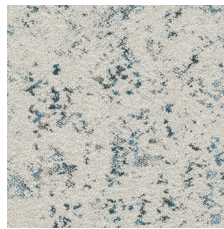
Refined - Butterscotch  
47210  
LRV 30.7 | L\* 62.27



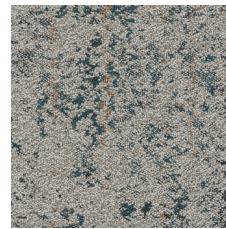
Pure - Mineral 47327  
LRV 42.0 | L\* 70.90



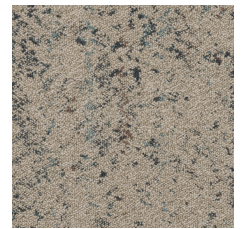
Classic - Sage 47375  
LRV 21.9 | L\* 53.96



Pure - Sky 47411  
LRV 40.5 | L\* 69.81



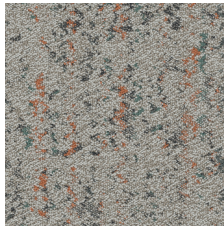
Classic - Slate Blue 47447  
LRV 21.5 | L\* 53.54



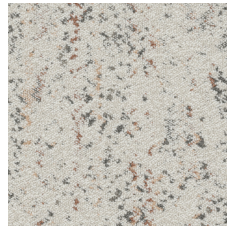
Mellow - Storm Cloud  
47485  
LRV 24.7 | L\* 56.75



Mellow - Medallion 47668  
LRV 22.0 | L\* 54.01



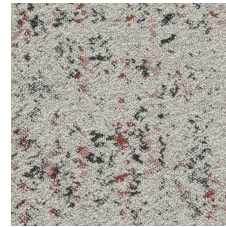
Classic - Dusty Apricot  
47675  
LRV 21.7 | L\* 53.73



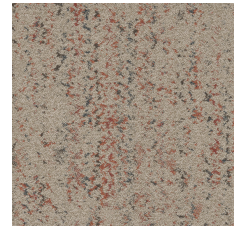
Pure - Bisque 47676  
LRV 39.7 | L\* 69.25



Refined - Walnut 47760  
LRV 30.9 | L\* 62.39



Refined - Powder Pink  
47800  
LRV 31.9 | L\* 63.28



Mellow - Rose 47870  
LRV 20.1 | L\* 51.93

## Additional Information

\*\*Manufactured in ISO 9001 certified facility. Meets or exceeds all local and national regulations in country of manufacture.

[Installation Guidelines](#)

[Maintenance Guidelines](#)

[lifetime commercial limited](#)

Specifications are subject to nominal manufacturing variance. Material supply and/or manufacturing processes may necessitate changes without notice.

This product is an exclusive design and may not be duplicated in any manner. Use of this design in the creation of another product design is also strictly prohibited.

Visit [shawcontract.com/testing](http://shawcontract.com/testing) for more information.



Corporate Headquarters +1 800 257 7429 | +1 706 532 7984 | Atlanta +1 404 853 7429 | Bengaluru +91 80 6773 0202 | Beijing +86 10 6568 588 | Chicago +1 312 467 1331 | Dubai +971 4 584 6956 | Hong Kong +852 2623 0371 | London +44 207 961 4120 | Los Angeles +1 800 233 1614 | Melbourne +61 3 9939 8543 | Mexico City +55 5010 7600 | Mumbai +91 22 6284 5050 | Nantong +86 400 800 7429 | New York +1 212 953 7429 | Paris +33 (0) 1 81 22 44 39 | San Francisco +1 415 955 1920 | Shanghai +86 21 3338 4000 | Singapore +65 6733 1811 | Sydney +61 800 556 302

© 2025 Shaw Industries Group, Inc., a Berkshire Hathaway Company  
May 17, 2025

3 of 3