

Understated Ecoworx S® Tile

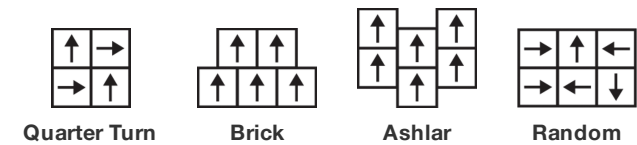
Stijlnummer	5T647	
Collectie	Creative Connections	
Producttype	Tapijttegel	
Construction	Standard	Data + Performance
Type Fabricage	ISO 2424	tufted 1/10" 39.4 per 10cm
Uitzicht	ISO 2424	Multilevel-Patroonlus
Verfmethode	EN 994	100% In Oplossing Geverfd
Productformaat	EN 994	50 cm x 50 cm 20 tiles (5 m²) per box
Primaire Backing	ISO 2424	Pet Nonwoven
Secundaire Backing	ISO 2424	Ecoworx S® Polyolefin Plastomer
Totale Dikte	ISO 1765	7.0 mm
Afgewerkte Pooldikte	ISO 1766	2.3 mm
Totale Massa	ISO 8543	2984 g/m²
Getuft Gewicht	ISO 2424	762 g/m²
Effectieve Poolmassa	ISO 8543	291 g/m²
Pooldichtheid	ISO 8543	0.126 g/cm³
Totaal Gerecycleerde Inhoud		55% (pre-consumer 55% post-consumer 0%)

Gegevens

Steken	ISO 1763	124,000/m² 31.5 per 10cm
Elektrostatische Weerstand	ISO 6356	≤ 2.0 kv (Stroll Test)
Gebruik Classificatie	EN 1307	33 Commercial Heavy
Luxeklasse	EN 1307	LC1
Dimensionale Stabiliteit	EN 986	≤ 0.2%
Contactgeluidsisolatie	ISO 10140	26 Db
Geluidsabsorptieclassificatie	ISO 354/11654	0.15 αW Class E
Warmteweerstand m² K/w	ISO 8302	0.087 M² K/W Tog 0.87
Weerstand Tegen Droog Uitglijden	ISO 13893	
Kleurvastheid Voor Licht	ISO 105-B02	>6
Ontvlambaarheid	EN 13501-1	Bfl-S1 (Adhered Testing)
Stoel Met Wieltjes	EN 985	≥2.4 Intensive USe

Levenslang Commercieel Beperkt subject to installation in full accordance with the manufacturer's instructions and a regular effective cleaning and maintenance programme. Second location warranties are available with the use of non-adhesive IOBAC Magtabs and Tabit accessories.

Aanbevolen Installatiemethode



Coördinerende Producten

Carpet Tile: **Interlaced Comfortworx® Tile, Interlaced Taskworx® Tile, Interlaced Ecoworx S® Tile**

Kenmerken + Certificeringen

Certifications Below Apply Exclusively To The Carpet Tile Rug Itself And Not The Lokworx Tabs Adhesive

Cradle to Cradle gecertificeerd™

Environmental Product Declaration (EPD)

Embodied Carbon (Cradle to Gate)

Life-Cycle Carbon Emissions

milieugarantie

land van herkomst

BREEAM Contribution Credit

Zilver Niveau (Versie 3.1)

3de Partij Gecertificeerd in Overeenstemming Met ISO14044, ISO14025 & EN15804

4.35 kg CO₂/m²

Carbon Neutral

Take Back Policy Offered For All Ecoworx S® Products

Verenigd Koninkrijk

Certificate of Approval

Schools/Offices/Health/Industrial Shed

Retail

Well V2 Contribution Credit

X08 Reductie gevaarlijke stoffen Deel 1: Beperking Optimalisatie Gevaarlijke Materialen - 1 pt **C2C Silver Level (Version 3.1)**

X10 Reductie van vluchtige stoffen Deel 1 (A): Beheer Vluchtige Organische Stoffen (VOS) Optimalisatie - 1 pt **C2C Silver Level (Version 3.1)**

X11 Langetermijn-emissiebeheersing - deel 2: Optimalisering van vloeren - 1 pt **M1> Emissions Class For Building Material**

X13 Verbeterde materiaalvoorzorgsmaatregelen Deel 1: Optimaliseren van materiaalkeuze - max 2 punten **C2C Silver Level (Version 3.1)**

X14 Transparantie van materialen Deel 1: Optimalisatie: Bevorderen van ingrediëntenopenbaarmaking - max 2 punten **C2C Silver Level (Version 3.1)**

Groen Leed Bijdragekrediet

"MR-krediet: Openbaarmaking en optimalisering van bouwproducten MateriaalIngrediënten - Optie 1: Rapportage materiaalIngrediënten" **C2C Silver Level (Version 3.1)**

"MR-krediet: openbaarmaking en optimalisering van bouwproducten MateriaalIngrediënten - Optie 2: Optimalisering van materiaalIngrediënten" **C2C Silver Level (Version 3.1)**

Memberships

WGBC Framework

UKGBC

Emirates Green Building Council

Chemsec

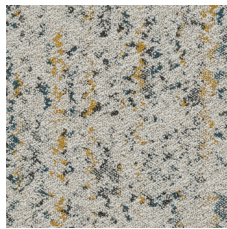
WGBC Framework

UKGBC

Emirates Green Building Council

Chemsec

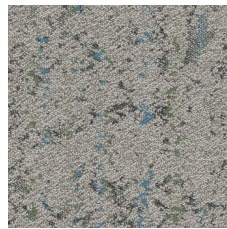
Lichtreflectiewaarde



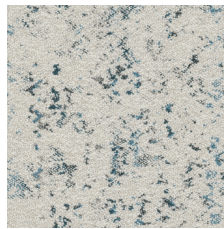
Refined - Butterscotch
47210
LRV 30.7 | L* 62.27



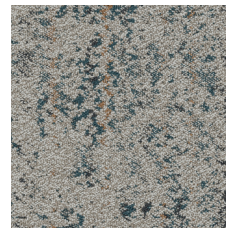
Pure - Mineral 47327
LRV 42.0 | L* 70.90



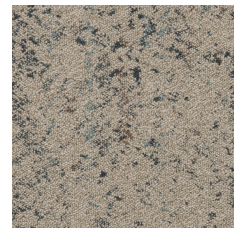
Classic - Sage 47375
LRV 21.9 | L* 53.96



Pure - Sky 47411
LRV 40.5 | L* 69.81



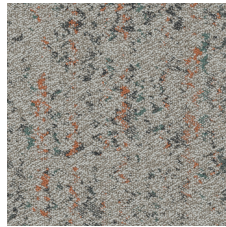
Classic - Slate Blue 47447
LRV 21.5 | L* 53.54



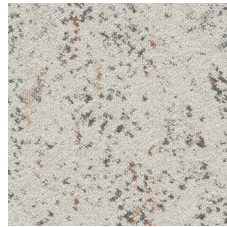
Mellow - Storm Cloud
47485
LRV 24.7 | L* 56.75



Mellow - Medallion 47668
LRV 22.0 | L* 54.01



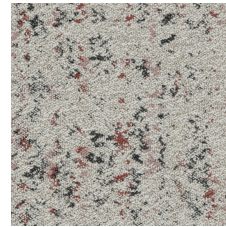
Classic - Dusty Apricot
47675
LRV 21.7 | L* 53.73



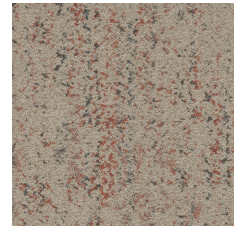
Pure - Bisque 47676
LRV 39.7 | L* 69.25



Refined - Walnut 47760
LRV 30.9 | L* 62.39



Refined - Powder Pink
47800
LRV 31.9 | L* 63.28



Mellow - Rose 47870
LRV 20.1 | L* 51.93

Aanvullende Informatie

**Manufactured in ISO 9001 certified facility. Meets or exceeds all local and national regulations in country of manufacture.

[Installation Guidelines](#)

[Maintenance Guidelines](#)

[levenslang commercieel beperkt](#)

Specifications are subject to nominal manufacturing variance. Material supply and/or manufacturing processes may necessitate changes without notice.

This product is an exclusive design and may not be duplicated in any manner. Use of this design in the creation of another product design is also strictly prohibited.

Visit shawcontract.com/testing for more information.



Corporate Headquarters +1 800 257 7429 | +1 706 532 7984 | Atlanta +1 404 853 7429 | Bengaluru +91 80 6773 0202 | Beijing +86 10 6568 588 | Chicago +1 312 467 1331 | Dubai +971 4 584 6956 | Hong Kong +852 2623 0371 | London +44 207 961 4120 | Los Angeles +1 800 233 1614 | Melbourne +61 3 9939 8543 | Mexico City +55 5010 7600 | Mumbai +91 22 6284 5050 | Nantong +86 400 800 7429 | New York +1 212 953 7429 | Paris +33 (0) 1 81 22 44 39 | San Francisco +1 415 955 1920 | Shanghai +86 21 3338 4000 | Singapore +65 6733 1811 | Sydney +61 800 556 302

© 2025 Shaw Industries Group, Inc., a Berkshire Hathaway Company
May 18, 2025

3 of 3