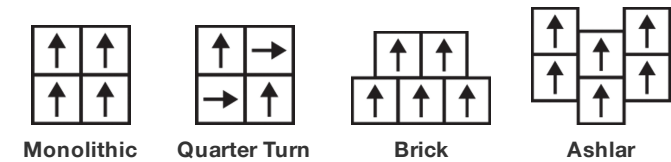


Breathe Tile Cn

製品型	Carpet Tile	
コレクション	Grounded Spaces	
スタイルナンバー	5T690	
建設	マルチレベル パターンループ	
染色法	100% 原液着色	
一次バックキング	合成	
二次バックキング	Ecoworx®タイル	
保護治療	SSP@shaw 土壌保護保証	
	u.s.	metric
商品のサイズ	24 in x 24 in	61 cm x 61 cm
ボックスあたりの面積	48 ft <sup>2</sup>	4.46 m <sup>2</sup>
ボックスあたりの個数	12 pcs	
ゲージ	1/12 in	47.2 per 10 cm
ステッチ	7.5 per in	30.0 per 10 cm
完成した杭の厚さ	0.076 in	1.93 mm
平均密度	7579 oz/yd <sup>3</sup>	0.28 g/cm <sup>3</sup>
総厚	0.241 in	6.12 mm
房状の重量	16 oz/yd <sup>2</sup>	542.5 g/m <sup>2</sup>

推奨インストール方法



データ + テスト

放射パネル (astm E648)	Class I
Nbs煙	Less Than 450
静電気の傾向	Less Than 3.5 kv
Cri Green Label Plus (glp)	GLP1263
錠剤テスト	Pass*
Adaコンプライアンス	>0.6、ADA 歩行面およびアクセス可能ルート用推奨静摩擦係数の基準に合致***

保証

生涯商用限定保証

## コーディネート商品

Carpet Tile: **Stillness Tile Cn, Disconnect Tile Cn, Visualize Tile Cn, Earthing Tile Cn, Manifest Tile Cn, Alignment Tile Cn, Presence Tile Cn, Meditate Tile Cn, Grounded Accent Tile Cn**

## 属性+認定

Certifications Below Apply Exclusively To The Carpet Tile Rug Itself And Not The Lokworx Tabs Adhesive

## Health &amp; Wellbeing

Material Ingredient Transparency

**Cradle to Cradle Certified® | Silver Level (Version 4.0)**  
**Health Product Declaration (HPD) | 1,000 ppm 開示**  
**Living Building Challenge (LBC) | レッドリスト記載化学物質無配合**  
**Declare | LBC 準拠**  
**NSF 140 | ゴールド**

Indoor Air Quality

**CRI Green Label Plus (GLP) | GLP1263**

## Climate Impact

Environmental Product Declaration (EPD)

**ISO14044、ISO14025 および EN15804 に基づく 第三者認証取得**

Embodied Carbon (Cradle to Gate)

**6.87 kg CO<sub>2</sub>/m<sup>2</sup>**

Life-Cycle Carbon Emissions\*\*\*\*

**Carbon Neutral**

Total Recycled Content

**56% (Pre-Consumer 56% | Post-Consumer 0%)**

Product Packaging

**100% リサイクル可能**

## Global Product Assessment

**Singapore Green Label | 認証取得**

**CE Marking (EN 14041) | 第三者認証取得**

**Environmental Guarantee\* | Re[turn] Reclamation Program\* | Through Our Environmental Guarantee, Shaw Pledges to Transport And Recycle Any Ecoworx Carpet.**

**Country of Origin\*\* | 中国**

## Well V2 Contribution Credit

X08 Hazardous Material Reduction Part 1: Limit Hazardous Materials Optimization – 1 pt

**C2C Silver Level (Version 4.0)**

X10 Volatile Compound Reduction Part 1 (A): Manage Volatile Organic Compounds (VOCs) Optimization – 1 pt

**C2C Silver Level (Version 4.0)**

X11 Long Term Emissions Control Part 2: Flooring Optimization – 1 pt

**Green Label Plus Certification: GLP9968**

X13 Enhanced Material Precaution Part 1: Select Optimized Materials Optimization – max 2 pts

**C2C Silver Level (Version 4.0)**

X14 Material Transparency Part 1: Promote Ingredient Disclosure Optimization – max 2 pts

**C2C Silver Level (Version 4.0)**

## グリーンリード貢献クレジット

MRクレジット：製品の開示と最適化の構築  
環境製品宣言-オプション1：環境製品宣言 (EPD)

**3rd Party Certified in Accordance with ISO14044, ISO14025 & EN15804**

MRクレジット：製品の開示と最適化の構築  
材料成分-オプション1：材料成分レポート

**C2C Silver Level (Version 4.0) or HPD (Version 2.1)**

MRクレジット：製品の開示と最適化の構築  
材料成分-オプション2：材料成分の最適化

**C2C Silver Level (Version 4.0)**

MRクレジット：製品の開示と最適化の構築  
原材料の調達-オプション2：リーダーシップの抽出実践

**Environmental Guarantee: Re[turn] Reclamation Program\* | Through Our Environmental Guarantee, Shaw Pledges to Transport And Recycle Any Ecoworx® Carpet.**

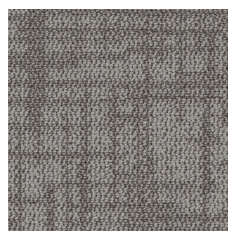
EQクレジット：低排出材料  
オプション1：製品カテゴリの計算

**Green Label Plus Certification: GLP9968**

MR Credit: Interiors Life-Cycle Impact Reduction  
Option 3: Design for Flexibility

**Ecoworx® Tile with Lokdots Installation System**

## Available Colorways



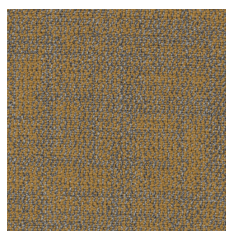
Flax 62105



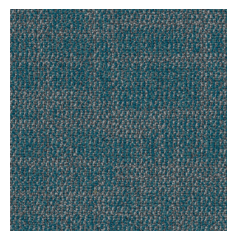
Tawny 62109



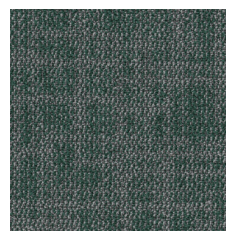
Sand 62111



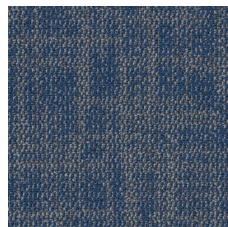
Harmonized Gold 62210



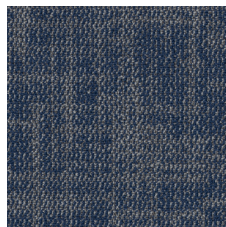
Connected Turquoise  
62323



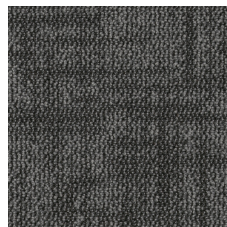
Centering Forest 62396



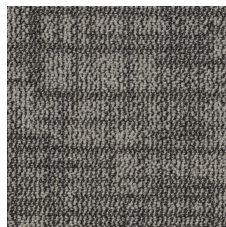
Supporting Cobalt 62485



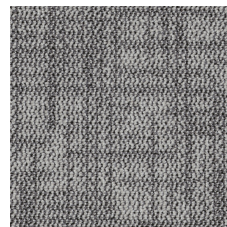
Agreeable Navy 62496



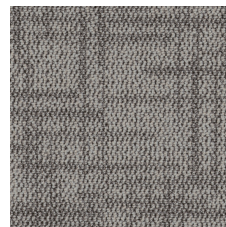
Leather 62500



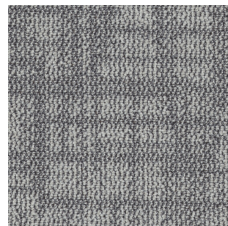
Sisal 62501



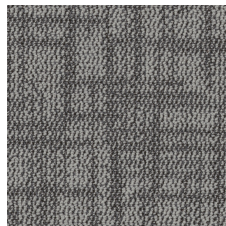
Quilt 62505



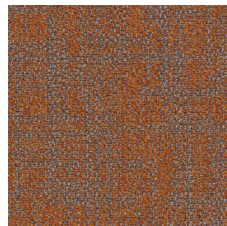
Oat 62518



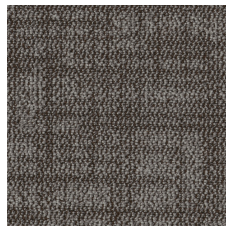
Stone 62530



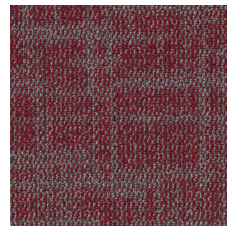
Natural 62585



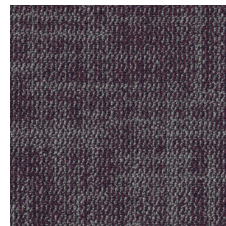
Helpful Tangerine 62668



Brown 62750



Mindful Burgundy 62850



Friendly Grape 62979

## 追加情報

\* To learn more about the recyclability of our products and our re[TURN], please visit [shawcontract.com/sustainability](https://shawcontract.com/sustainability).

\*\*Meets or exceeds all local and national regulations in country of manufacture.

\*\*\*This carpet is manufactured to be ADA compliant, but to be fully ADA compliant, the end-user must ensure the carpet is adhered to the floor and installed as outlined in the ADA standards.

\*\*\*\*Life-Cycle is modeled from US manufacturing.

[Installation Guidelines](#)

[Maintenance Guidelines](#)

Specifications are subject to nominal manufacturing variance. Material supply and/or manufacturing processes may necessitate changes without notice.

This product is an exclusive design and may not be duplicated in any manner. Use of this design in the creation of another product design is also strictly prohibited.

Visit [shawcontract.com/testing](https://shawcontract.com/testing) for more information.



**Declare.**



**PVC-Free**