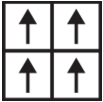


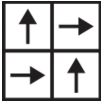
Breathe Tile Cn

상품 유형	Carpet Tile	
수집	Grounded Spaces	
스타일 번호	5T690	
구성	다중 레벨 루프식	
염료 방법	100% 원착 염색	
기본 백업	합성	
보조 백업	Ecoworx® 타일	
보호 처리	SSP® Shaw 흠먼지 보호	
	u.s.	metric
제품 크기	24 in x 24 in	61 cm x 61 cm
상자 당 면적	48 ft²	4.46 m²
상자 당 조각	12 pcs	
계량기	1/12 in	47.2 per 10 cm
스티치	7.5 per in	30.0 per 10 cm
완성 된 말뚝 두께	0.076 in	1.93 mm
평균 밀도	7579 oz/yd³	0.28 g/cm³
총 두께	0.241 in	6.12 mm
슬을다는 무게	16 oz/yd²	542.5 g/m²

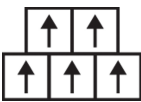
권장 설치 방법



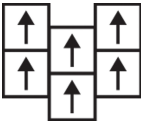
Monolithic



Quarter Turn



Brick



Ashlar

데이터 + 테스트

복사 패널 (Astm E648)	Class I
Nbs 연기	Less Than 450
정전기 성향	Less Than 3.5 kv
Cri 그린 라벨 플러스 (Glp)	GLP1263
알약 테스트	Pass*
Ada 준수	0.6 이상, ADA 보행 노면과 이용 가능한 경로의 권장 마찰계수 충족***

보증

종신 상용 제한

코디네이팅 제품

Carpet Tile: **Stillness Tile Cn, Disconnect Tile Cn, Visualize Tile Cn, Earthing Tile Cn, Manifest Tile Cn, Alignment Tile Cn, Presence Tile Cn, Meditate Tile Cn, Grounded Accent Tile Cn**

속성 + 인증

Certifications Below Apply Exclusively To The Carpet Tile Rug Itself And Not The Lokworx Tabs Adhesive

Health & Wellbeing

Material Ingredient Transparency

Cradle to Cradle Certified® | Silver Level (Version 4.0)  
Health Product Declaration (HPD) | 1,000ppm 노출  
Living Building Challenge (LBC) | 적색목록 화학물질 없음  
Declare | LBC 규격  
NSF 140 | 골드

Indoor Air Quality

CRI Green Label Plus (GLP) | GLP1263

Climate Impact

Environmental Product Declaration (EPD)

ISO14044, ISO14025 및 EN15804에 따라 타사 인증 획득

Embodied Carbon (Cradle to Gate)

6.87 kg CO<sub>2</sub>/m<sup>2</sup>

Life-Cycle Carbon Emissions\*\*\*\*

Carbon Neutral

Total Recycled Content

56% (Pre-Consumer 56% | Post-Consumer 0%)

Product Packaging

100% 재활용 가능

Global Product Assessment

Singapore Green Label | 인증

CE Marking (EN 14041) | 타사 인증 획득

Environmental Guarantee\* | Re[turn] Reclamation Program\* | Through Our Environmental Guarantee, Shaw Pledges to Transport And Recycle Any Ecoworx Carpet.

Country of Origin\*\* | Imported

Well V2 Contribution Credit

X08 Hazardous Material Reduction Part 1: Limit Hazardous Materials Optimization – 1 pt

C2C Silver Level (Version 4.0)

X10 Volatile Compound Reduction Part 1 (A): Manage Volatile Organic Compounds (VOCs) Optimization – 1 pt

C2C Silver Level (Version 4.0)

X11 Long Term Emissions Control Part 2: Flooring Optimization – 1 pt

Green Label Plus Certification: GLP9968

X13 Enhanced Material Precaution Part 1: Select Optimized Materials Optimization – max 2 pts

C2C Silver Level (Version 4.0)

X14 Material Transparency Part 1: Promote Ingredient Disclosure Optimization – max 2 pts

C2C Silver Level (Version 4.0)

녹색의 공헌 기여 크레딧

MR 크레딧 : 제품 공개 및 최적화 구축  
환경 제품 선언-옵션 1 : 환경 제품 선언 (EPD)

3rd Party Certified in Accordance with ISO14044, ISO14025 & EN15804

MR 크레딧 : 제품 공개 및 최적화 구축  
재료 성분-옵션 1 : 재료 성분보고

C2C Silver Level (Version 4.0) or HPD (Version 2.1)

MR 크레딧 : 제품 공개 및 최적화 구축  
재료 성분-옵션 2 : 재료 성분 최적화

C2C Silver Level (Version 4.0)

MR 크레딧 : 제품 공개 및 최적화 구축  
원료 소싱-옵션 2 : 리더십 추출 사례

Environmental Guarantee: Re[turn] Reclamation Program\* | Through Our Environmental Guarantee, Shaw Pledges to Transport And Recycle Any Ecoworx® Carpet.

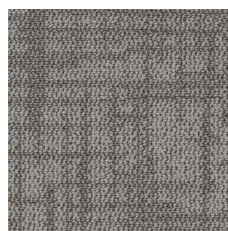
EQ 크레딧 : 저 발광 재료  
옵션 1 : 제품 범주 계산

Green Label Plus Certification: GLP9968

MR Credit: Interiors Life-Cycle Impact Reduction  
Option 3: Design for Flexibility

Ecoworx® Tile with Lokdots Installation System

## Available Colorways



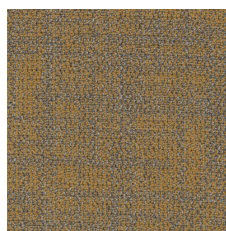
Flax 62105



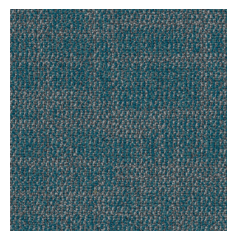
Tawny 62109



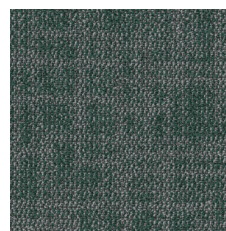
Sand 62111



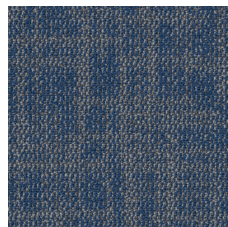
Harmonized Gold 62210



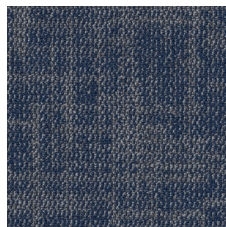
Connected Turquoise  
62323



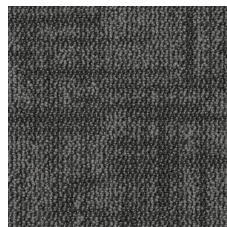
Centering Forest 62396



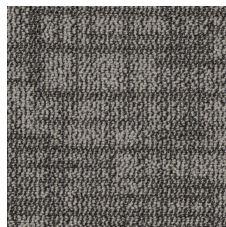
Supporting Cobalt 62485



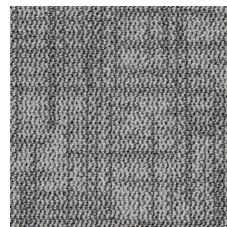
Agreeable Navy 62496



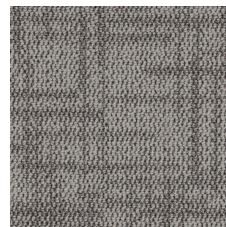
Leather 62500



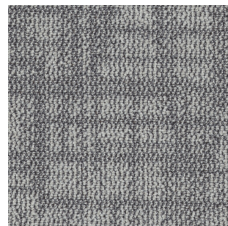
Sisal 62501



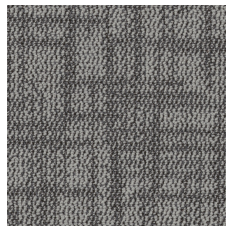
Quilt 62505



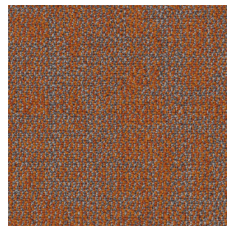
Oat 62518



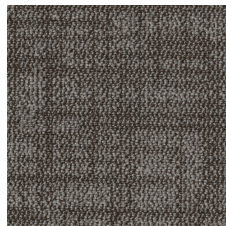
Stone 62530



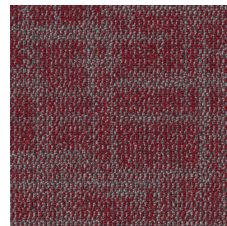
Natural 62585



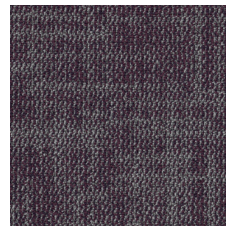
Helpful Tangerine 62668



Brown 62750



Mindful Burgundy 62850



Friendly Grape 62979

## 추가 정보

\* To learn more about the recyclability of our products and our re[TURN], please visit [shawcontract.com/sustainability](https://shawcontract.com/sustainability).

\*\*Meets or exceeds all local and national regulations in country of manufacture.

\*\*\*This carpet is manufactured to be ADA compliant, but to be fully ADA compliant, the end-user must ensure the carpet is adhered to the floor and installed as outlined in the ADA standards.

\*\*\*\*Life-Cycle is modeled from US manufacturing.

[Installation Guidelines](#)

[Maintenance Guidelines](#)

Specifications are subject to nominal manufacturing variance. Material supply and/or manufacturing processes may necessitate changes without notice.

This product is an exclusive design and may not be duplicated in any manner. Use of this design in the creation of another product design is also strictly prohibited.

Visit [shawcontract.com/testing](https://shawcontract.com/testing) for more information.



**Declare.**



**PVC-Free**

Corporate Headquarters +1 800 257 7429 | +1 706 532 7984 | Atlanta +1 404 853 7429 | Bengaluru +91 80 6773 0202 | Beijing +86 10 6568 588 | Chicago +1 312 467 1331 | Dubai +971 4 584 6956 | Hong Kong +852 2623 0371 | London +44 207 961 4120 | Los Angeles +1 800 233 1614 | Melbourne +61 3 9939 8543 | Mexico City +55 5010 7600 | Mumbai +91 22 6284 5050 | Nantong +86 400 800 7429 | New York +1 212 953 7429 | Paris +33 (0) 1 81 22 44 39 | San Francisco +1 415 955 1920 | Shanghai +86 21 3338 4000 | Singapore +65 6733 1811 | Sydney +61 800 556 302

© 2025 Shaw Industries Group, Inc., a Berkshire Hathaway Company  
July 18, 2025

3 of 3