

Text

Tipo De Produto	Carpete Em Rolo	
Coleção	Turn-Key	
Número Do Produto	5A123	
Construção	Bouclé Padrão	
Fibra	Ecosolution Q® Nylon	
Base Primária	Sintético	
Base Secundária	Classicbac®	
Tratamentos De Proteção	SSP® Shaw Proteção Anti-Manchas	
Adesivo Recomendado	1000 Broadloom 4 Gallon or 3800 Indoor Outdoor Broadloom 4 Gallon	
	u.s.	metric
Tamanho Do Produto	12 ft	3.66 m
Calibre	1/10 in	39.4 per 10 cm
Pontos	11.0 per in	44.5 per 10 cm
Espessura Da Fibra	0.150 in	3.81 mm
Acabada		
Densidade Média	6240 oz/yd³	0.231 g/cm³
Kilotex		13.77
Espessura Total	0.292 in	7.42 mm
Peso Da Fibra	26 oz/yd²	881.5 g/m²
Repetição Do Padrão Na Instalação	0.60" w x 0.70" l	1.52 cm w x 1.78 cm l



Método De Instalação Recomendado

Direct Glue, Double Glue, Stretch-In

Dados + Teste

Teste De Ignição (Pill)	Pass
Painel Radiante (Astm E648)	Class I
Nbs Fumaça	Less Than 450
Propensão Eletrostática	Less Than 3.5 kv
Cri Green Label Plus (Bpl)	GLP8472
Ada Compliance	≥0.6, Atende as recomendações do coeficiente de fricção estático para as superfícies caminháveis ADA e rotas acessíveis***

Test Reports may be included or listed by the manufacturing/inventory style number as opposed to the noted selling style number.

Produtos Coordenados

Broadloom: **Terra, Fossil, Blog, Essential, Prime**

Atributos + Certificações

Health & Wellbeing

Material Ingredient Transparency

**Cradle to Cradle Certified® | Nível Prata (Versão 3.1)**  
**Health Product Declaration (HPD) | Divulgado 1,000 ppm**  
**NSF 140 | Ouro**

Indoor Air Quality

**CRI Green Label Plus (GLP) | GLP8472**

Climate Impact

Environmental Product Declaration (EPD)

**3rd Party Certified De Acordo Com ISO14044, ISO14025 & EN15804**

Embodied Carbon (Cradle to Gate)

**12 kg CO<sub>2</sub>/m<sup>2</sup>**

Total Recycled Content

**<1% (Pre-Consumer <1% | Post-Consumer 0%)**

Product Packaging

**100% Reciclável**

Global Product Assessment

**CE Marking (EN 14041) | Certificado 3rd Party**  
**Environmental Guarantee\* | Re[turn] Reclamation Program\* | Pickup & Delivery Available**  
**Country of Origin\*\* | Imported**

Well V2 Contribution Credit

X08 Hazardous Material Reduction Part 1: Limit Hazardous Materials Optimization – 1 pt

**C2C Nível Prata (Versão 3.1)**

X10 Volatile Compound Reduction Part 1 (A): Manage Volatile Organic Compounds (VOCs) Optimization – 1 pt

**C2C Nível Prata (Versão 3.1)**

X11 Long Term Emissions Control Part 2: Flooring Optimization – 1 pt

**Green Label Plus Certificationglp8472**

X13 Enhanced Material Precaution Part 1: Select Optimized Materials Optimization – max 2 pts

**C2C Nível Prata (Versão 3.1)**

X14 Material Transparency Part 1: Promote Ingredient Disclosure Optimization – max 2 pts

**C2C Nível Prata (Versão 3.1)**

Crédito De Contribuição

MR Credit: Divulgação e otimização de produtos de construção  
Declarações ambientais do produto - Opção 1: Declaração ambiental do produto (EPD)

**3rd Party Certified in Accordance with ISO14044, ISO14025 & EN15804**

MR Credit: Divulgação e otimização de produtos de construção  
Ingredientes materiais - Opção 1: Relatório de ingredientes materiais

**C2C Nível Prata (Versão 3.1)**

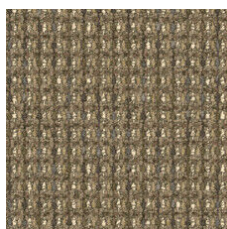
MR Credit: Divulgação e otimização de produtos de construção  
Ingredientes do material - Opção 2: Otimização do ingrediente do material

**C2C Nível Prata (Versão 3.1)**

Crédito de EQ: Materiais de baixa emissão  
Opção 1: cálculos de categoria de produto

**Certificação Green Label Plus: GLP8472**

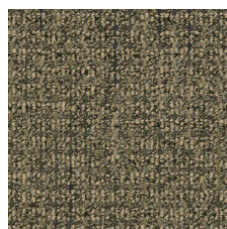
## Available Colorways



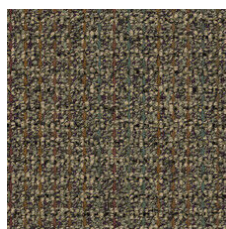
Buttercup 23103



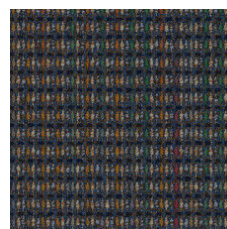
Bronze Tone 23150



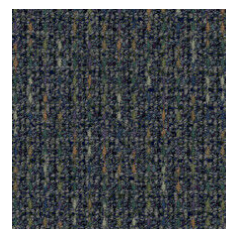
Dry Sage 23309



African Violet 23340



Blue Lapis 23420



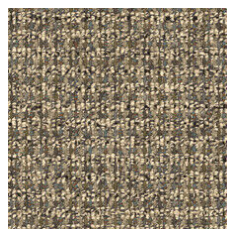
Twilight Blue 23485



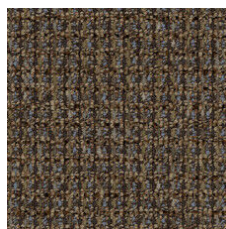
Granite 23500



Harvest Brown 23740



Wild Rice 23755



Vintage Taupe 23761



Bonfire 23855

## Informação Adicional

\* To learn more about the recyclability of our products and our Environmental Guarantee, please visit [shawcontract.com/sustainability](https://shawcontract.com/sustainability).

\*\*Meets or exceeds all local and national regulations in country of manufacture. (Manufactured in an ISO 9001 & ISO 14001 certified facility or equivalent)

\*\*\*This carpet is manufactured to be ADA compliant, but to be fully ADA compliant, the end-user must ensure the carpet is adhered to the floor and installed as outlined in the ADA standards.

[Installation Guidelines](#)

[Maintenance Guidelines](#)

Specifications are subject to nominal manufacturing variance. Material supply and/or manufacturing processes may necessitate changes without notice.

This product is an exclusive design and may not be duplicated in any manner. Use of this design in the creation of another product design is also strictly prohibited.

Visit [shawcontract.com/testing](https://shawcontract.com/testing) for more information.



**PVC-Free**

Corporate Headquarters +1 800 257 7429 | +1 706 532 7984 | Atlanta +1 404 853 7429 | Bengaluru +91 80 6773 0202 | Beijing +86 10 6568 588 | Chicago +1 312 467 1331 | Dubai +971 4 584 6956 | Hong Kong +852 2623 0371 | London +44 207 961 4120 | Los Angeles +1 800 233 1614 | Melbourne +61 3 9939 8543 | Mexico City +55 5010 7600 | Mumbai +91 22 6284 5050 | Nantong +86 400 800 7429 | New York +1 212 953 7429 | Paris +33 (0) 1 81 22 44 39 | San Francisco +1 415 955 1920 | Shanghai +86 21 3338 4000 | Singapore +65 6733 1811 | Sydney +61 800 556 302

© 2025 Shaw Industries Group, Inc., a Berkshire Hathaway Company  
July 18, 2025

3 of 3