

Text

Type De Produit	Moquette EN Lé	
Collection	Turn-Key	
Numéro Du Style	5A123	
Construction	Boucle De Motif	
Fibre	Ecosolution Q® Nylon	
Sous-couche Primaire	Synthétique	
Sous-couche Secondaire	Classicbac®	
Traitements Protecteurs	SSP® Shaw Protection Du Sol	
Adhésif Recommandé	H1000, H1200 or H3800	
	u.s.	metric
Dimensions Du Produit	12 ft	3.66 m
Jauge	1/10 in	39.4 per 10 cm
Points	11.0 per in	44.5 per 10 cm
Densité Moyenne	6240 oz/yd³	0.231 g/cm³
Kilotex		13.77
Epaisseur Du Velours	0.292 in	7.42 mm
Poids Tufté	26 oz/yd²	881.5 g/m²
Installation Répétition Du Motif	0.60" w x 0.70" l	1.52 cm w x 1.78 cm l



Méthodes d'Installation Conseillées

Direct Glue, Double Glue, Stretch-In

Données + Tests Et Essai

Test d'Inflammabilité	Pass
Panneau Rayonnant (Astm E648)	Class I
Nbs Smoke	Less Than 450
Propension Électrostatique	Less Than 3.5 kv
Label Cri Green Label Plus (Glp)	GLP8472
Ada Compliance	>0.6, Meets the recommended static coefficient of friction for ADA walking surfaces and accessible routes***

Test Reports may be included or listed by the manufacturing/inventory style number as opposed to the noted selling style number.

Attributs + Certifications

- Certification Cradle to Cradle™ (C2C)
- Déclaration environnementale de produit (EPD)
- NSF 140
- CRI Green Label Plus (GLP)
- Label CE (EN 14041)
- garantie environnementale
- contenu recyclé total
- emballage du produit
- pays d'origine

Silver Level (Version 3.1)
Certifié Par Un Organisme Tiers Conformément Aux Normes ISO 14044, ISO 14025 & EN15804
or
GLP8472
Certifié Par Un Organisme Tiers
Re[turn] Reclamation Program* | Pickup & Delivery Available
<1% (Pre-Consumer <1% | Post-Consumer 0%)
100% Recyclable
USA

Coordination Des Produits

Broadloom: **Terra, Fossil, Blog, Essential, Prime**

Contribution À La Certification Leed

MR Credit: Building Product Disclosure and Optimisation
Environmental Product Declarations - Option 1: Environmental Product Declaration (EPD)

MR Credit: Building Product Disclosure and Optimisation
Material Ingredients - Option 1: Material Ingredient Reporting

MR Credit: Building Product Disclosure and Optimisation
Material Ingredients - Option 2: Material Ingredient Optimization

"Crédit EQ : matériaux faibles émissions
Option 1 : calculs par catégorie de produit"

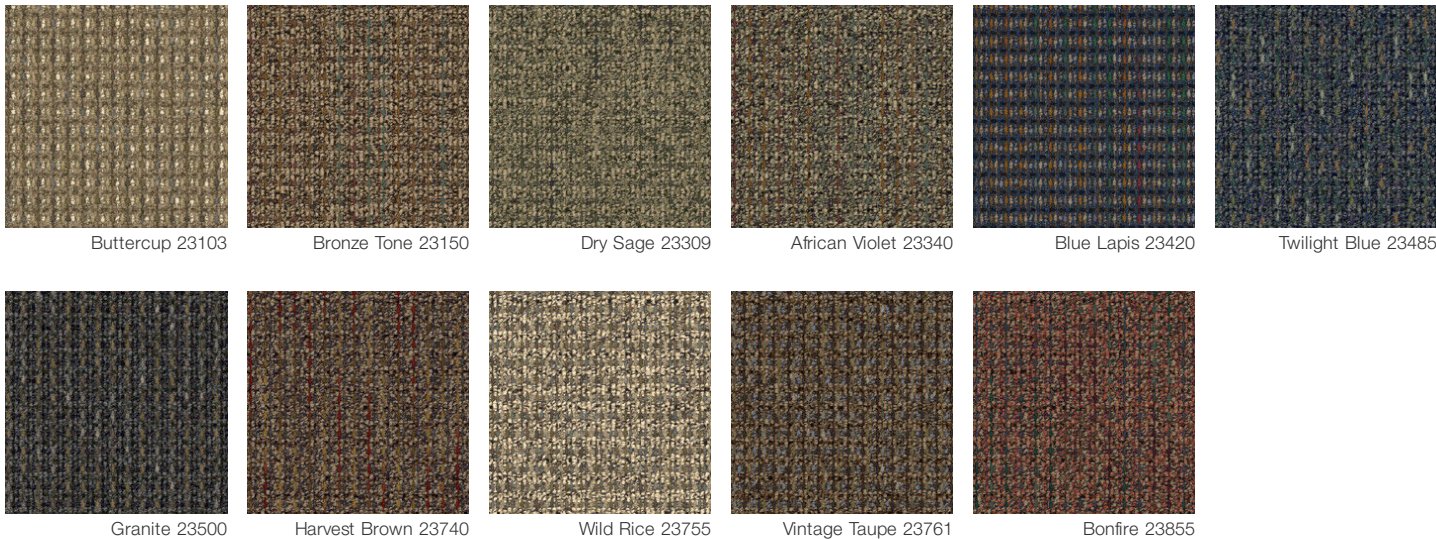
3rd Party Certified in Accordance with ISO 14044, ISO 14025 & EN15804

C2C Silver Level (Version 3.1)

C2C Silver Level (Version 3.1)

Certified

Available Colorways



Informations Supplémentaires

* To learn more about the recyclability of our products and our Environmental Guarantee, please visit shawcontract.com/sustainability.

**Meets or exceeds all local and national regulations in country of manufacture. (Manufactured in an ISO 9001 & ISO 14001 certified facility or equivalent)

***This carpet is manufactured to be ADA compliant, but to be fully ADA compliant, the end-user must ensure the carpet is adhered to the floor and installed as outlined in the ADA standards.

[Installation Guidelines](#)

[Maintenance Guidelines](#)

Specifications are subject to nominal manufacturing variance. Material supply and/or manufacturing processes may necessitate changes without notice.

This product is an exclusive design and may not be duplicated in any manner. Use of this design in the creation of another product design is also strictly prohibited.

Visit shawcontract.com/testing for more information.

