

Blog

Type De Produit	Moquette EN Lé	
Collection	Turn-Key	
Numéro Du Style	5A125	
Construction	Boucle De Motif	
Fibre	Ecosolution Q® Nylon	
Sous-couche Primaire	Synthétique	
Sous-couche Secondaire	Classicbac®	
Traitements Protecteurs	SSP® Shaw Protection Du Sol	
Adhésif Recommandé	H1000, H1200 or H3800	
	u.s.	metric
Dimensions Du Produit	12 ft	3.66 m
Jauge	1/10 in	39.4 per 10 cm
Points	9.0 per in	36.5 per 10 cm
Densité Moyenne	5503 oz/yd³	0.204 g/cm³
Kilotex		11.88
Epaisseur Du Velours	0.319 in	8.1 mm
Poids Tufté	24 oz/yd²	813.7 g/m²
Installation Répétition Du Motif	0.60" w x 0.10" l	15.24 mm w x 2.54 mm l



Méthodes d'Installation Conseillées

Direct Glue, Double Glue, Stretch-In

Données + Tests Et Essai

Test d'Inflammabilité	Pass
Panneau Rayonnant (Astm E648)	Class I
Nbs Smoke	Less Than 450
Propension Électrostatique	Less Than 3.5 kv
Label Cri Green Label Plus (Glp)	GLP8472
Ada Compliance	>0.6, Meets the recommended static coefficient of friction for ADA walking surfaces and accessible routes***

Test Reports may be included or listed by the manufacturing/inventory style number as opposed to the noted selling style number.

Attributs + Certifications

Certification Cradle to Cradle™ (C2C)	Silver Level (Version 3.1)
Déclaration environnementale de produit (EPD)	Certifié Par Un Organisme Tiers Conformément Aux Normes ISO 14044, ISO 14025 & EN15804
NSF 140	or
CRI Green Label Plus (GLP)	GLP8472
Label CE (EN 14041)	Certifié Par Un Organisme Tiers
garantie environnementale	Re[turn] Reclamation Program*   Pickup & Delivery Available
contenu recyclé total	<1% (Pre-Consumer <1%   Post-Consumer 0%)
emballage du produit	100% Recyclable
pays d'origine	USA

## Coordination Des Produits

Broadloom: **Terra, Fossil, Text, Essential, Prime**

## Contribution À La Certification Leed

MR Credit: Building Product Disclosure and Optimisation  
Environmental Product Declarations - Option 1: Environmental Product Declaration (EPD)

MR Credit: Building Product Disclosure and Optimisation  
Material Ingredients - Option 1: Material Ingredient Reporting

MR Credit: Building Product Disclosure and Optimisation  
Material Ingredients - Option 2: Material Ingredient Optimization

"Crédit EQ : matériaux faibles émissions  
Option 1 : calculs par catégorie de produit"

**3rd Party Certified in Accordance with ISO 14044, ISO 14025 & EN15804**

**C2C Silver Level (Version 3.1)**

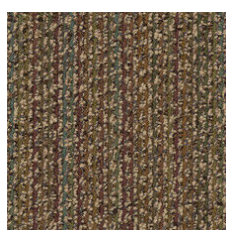
**C2C Silver Level (Version 3.1)**

**Certified**

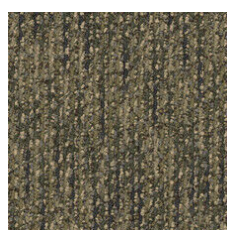
## Available Colorways



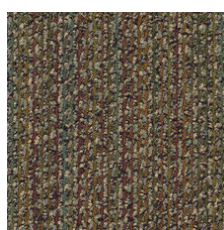
Buttercup 25103



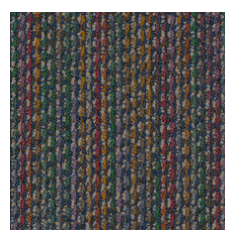
Bronze Tone 25150



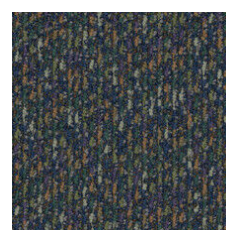
Dry Sage 25309



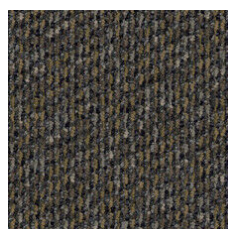
African Violet 25340



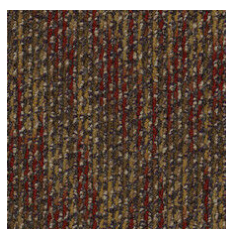
Blue Lapis 25420



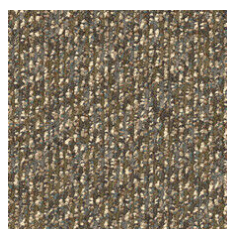
Twilight Blue 25485



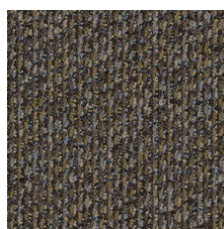
Granite 25500



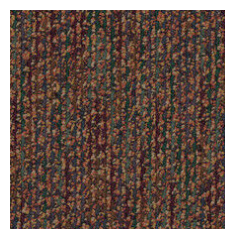
Harvest Brown 25740



Wild Rice 25755



Vintage Taupe 25761



Bonfire 25855

## Informations Supplémentaires

\* To learn more about the recyclability of our products and our Environmental Guarantee, please visit [shawcontract.com/sustainability](https://shawcontract.com/sustainability).

\*\*Meets or exceeds all local and national regulations in country of manufacture. (Manufactured in an ISO 9001 & ISO 14001 certified facility or equivalent)

\*\*\*This carpet is manufactured to be ADA compliant, but to be fully ADA compliant, the end-user must ensure the carpet is adhered to the floor and installed as outlined in the ADA standards.

[Installation Guidelines](#)

[Maintenance Guidelines](#)

Specifications are subject to nominal manufacturing variance. Material supply and/or manufacturing processes may necessitate changes without notice.

This product is an exclusive design and may not be duplicated in any manner. Use of this design in the creation of another product design is also strictly prohibited.

Visit [shawcontract.com/testing](https://shawcontract.com/testing) for more information.



**PVC-Free**

Corporate Headquarters +1 800 257 7429 | +1 706 532 7984 | Atlanta +1 404 853 7429 | Bengaluru +91 80 6773 0202 | Beijing +86 10 6568 588 | Chicago +1 312 467 1331 | Dubai +971 4 584 6956 | Hong Kong +852 2623 0371 | Latin America (Miami) +1 305 827 5912 | London +44 207 961 4120 | Los Angeles +1 800 233 1614 | Melbourne +61 3 9939 8543 | Mexico City +55 5010 7600 | Mumbai +91 22 6284 5050 | Nantong +86 400 800 7429 | New York +1 212 953 7429 | Paris +33 (0) 1 81 22 44 39 | San Francisco +1 415 955 1920 | Santiago +562 2431 5000 x 550 | São Paulo +55 11 3071 1702 | Shanghai +86 21 3338 4000 | Singapore +65 6733 1811 | Sydney +1 800 556 302

© 2024 Shaw Industries Group, Inc., a Berkshire Hathaway Company  
May 21, 2024

2 of 2