

Blog

상품 유형	Broadloom	
수집	Turn-Key	
스타일 번호	5A125	
구성	패턴 루프식	
섬유	Ecosolution Q® 나일론	
기본 백업	합성	
보조 백업	Classicbac®	
보호 처리	SSP® Shaw 흠먼지 보호	
권장 접착제	H1000, H1200 or H3800	
	u.s.	metric
제품 크기	12 ft	3.66 m
계량기	1/10 in	39.4 per 10 cm
스티치	9.0 per in	36.5 per 10 cm
평균 밀도	5503 oz/yd³	0.204 g/cm³
킬로 텍스		11.88
총 두께	0.319 in	8.1 mm
술을다는 무게	24 oz/yd²	813.7 g/m²
설치 패턴 반복	0.60" w x 0.10" l	15.24 mm w x 2.54 mm l



권장 설치 방법

Direct Glue, Double Glue, Stretch-In

데이터 + 테스트

알약 테스트	Pass
복사 패널 (Astm E648)	Class I
Nbs 연기	Less Than 450
정전기 성향	Less Than 3.5 kv
Cri 그린 라벨 플러스 (Glp)	GLP8472
Ada 준수	0.6 이상, ADA 보행 노면과 이용 가능한 경로의 권장 마찰계수 충족***

Test Reports may be included or listed by the manufacturing/inventory style number as opposed to the noted selling style number.

코디네이팅 제품

Broadloom: **Terra, Fossil, Text, Essential, Prime**

속성 + 인증

Health & Wellbeing

Material Ingredient Transparency

Indoor Air Quality

Cradle to Cradle Certified® | Silver 레벨(버전 3.1)**NSF 140 | 골드****CRI Green Label Plus (GLP) | GLP8472**

Climate Impact

Environmental Product Declaration (EPD)

Total Recycled Content

Product Packaging

ISO14044, ISO14025 및 EN15804에 따라 타사 인증 획득**<1% (Pre-Consumer <1% | Post-Consumer 0%)****100% 재활용 가능**

Global Product Assessment

CE Marking (EN 14041) | 타사 인증 획득**Environmental Guarantee* | Re[turn] Reclamation Program* | Pickup & Delivery Available****Country of Origin** | Imported**

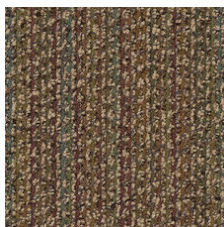
녹색의 공헌 기여 크레딧

MR 크레딧 : 제품 공개 및 최적화 구축
환경 제품 선언-옵션 1 : 환경 제품 선언 (EPD)MR 크레딧 : 제품 공개 및 최적화 구축
재료 성분-옵션 1 : 재료 성분보고MR 크레딧 : 제품 공개 및 최적화 구축
재료 성분-옵션 2 : 재료 성분 최적화EQ 크레딧 : 저 발광 재료
옵션 1 : 제품 범주 계산**3rd Party Certified in Accordance with ISO14044, ISO14025 & EN15804****C2C Silver Level (Version 3.1)****C2C Silver Level (Version 3.1)****Green Label Plus Certification: GLP8472**

Available Colorways



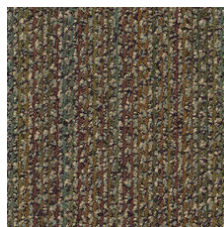
Buttercup 25103



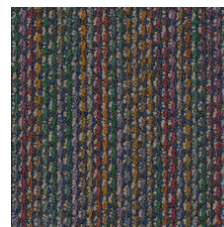
Bronze Tone 25150



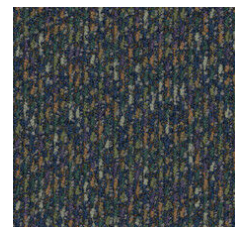
Dry Sage 25309



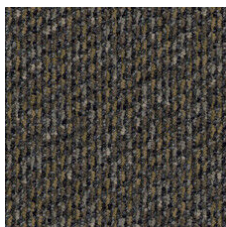
African Violet 25340



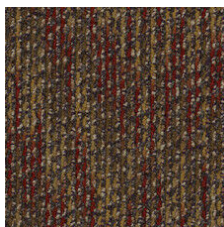
Blue Lapis 25420



Twilight Blue 25485



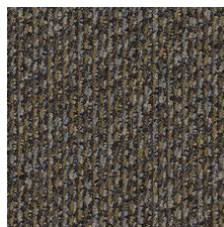
Granite 25500



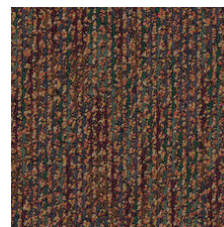
Harvest Brown 25740



Wild Rice 25755



Vintage Taupe 25761



Bonfire 25855

추가 정보

* To learn more about the recyclability of our products and our Environmental Guarantee, please visit shawcontract.com/sustainability.

**Meets or exceeds all local and national regulations in country of manufacture. (Manufactured in an ISO 9001 & ISO 14001 certified facility or equivalent)

***This carpet is manufactured to be ADA compliant, but to be fully ADA compliant, the end-user must ensure the carpet is adhered to the floor and installed as outlined in the ADA standards.

[Installation Guidelines](#)

[Maintenance Guidelines](#)

Specifications are subject to nominal manufacturing variance. Material supply and/or manufacturing processes may necessitate changes without notice.

This product is an exclusive design and may not be duplicated in any manner. Use of this design in the creation of another product design is also strictly prohibited.

Visit shawcontract.com/testing for more information.



PVC-Free

Corporate Headquarters +1 800 257 7429 | +1 706 532 7984 | Atlanta +1 404 853 7429 | Bengaluru +91 80 6773 0202 | Beijing +86 10 6568 588 | Chicago +1 312 467 1331 | Dubai +971 4 584 6956 | Hong Kong +852 2623 0371 | Latin America (Miami) +1 305 827 5912 | London +44 207 961 4120 | Los Angeles +1 800 233 1614 | Melbourne +61 3 9939 8543 | Mexico City +55 5010 7600 | Mumbai +91 22 6284 5050 | Nantong +86 400 800 7429 | New York +1 212 953 7429 | Paris +33 (0) 1 81 22 44 39 | San Francisco +1 415 955 1920 | Santiago +562 2431 5000 x 550 | São Paulo +55 11 3071 1702 | Shanghai +86 21 3338 4000 | Singapore +65 6733 1811 | Sydney +1 800 556 302