

Gradient

Tipo De Producto	Alfombra EN Rollo
Colección	Shade
Número De Estilo	5A153
Construcción	Bucle Gráfico
Fibra	Ecosolution Q® Nylon
Método De Teñido	100% Solution Dyed
Base Primaria	Sintético
Base Secundaria	Classicbac®
Tratamientos Protectores	SSP® Shaw Protección Para El Piso
Adhesivo Recomendado	1000 Broadloom or 3800 Indoor Outdoor Broadloom

	u.s.	metric
Tamaño Del Producto	12 ft	3.66 m
Gauge	1/8 in	31.5 per 10 cm
Puntadas	12.0 per in	47.5 per 10 cm
Espesor De La Fibra Terminada	0.098 in	2.49 mm
Densidad Media	11020 oz/yd ³	0.408 g/cm ³
Kilotex		13.58
Espesor Total	0.278 in	7.06 mm
Peso De La Fibra	30 oz/yd ²	1017.2 g/m ²
Repetición Del Patrón De Instalación	None	



Método De Instalación Recomendado

Direct Glue, Double Glue, Stretch-In

Datos + Pruebas

Prueba De Pastillas (Pill)	Pass
Panel Radiante (Astm E648)	Class I
Nbs Humo	Less Than 450
Propensión Electrostática	Less Than 3.5 kv
Cri Green Label Plus (Glp)	GLP8472
Ada Compliance	≥0.6, Cumple con las recomendaciones para el coeficiente de fricción estática para superficies transitables ADA y rutas accesibles***

Test Reports may be included or listed by the manufacturing/inventory style number as opposed to the noted selling style number.

Garantías

10 Años Limitado A USo Comercial

Productos Que Combinan

Carpet Tile: **Gradient Tile**
Broadloom: **Tint, Tone**

Atributos + Certificaciones

Health & Wellbeing	
Material Ingredient Transparency	Cradle to Cradle Certified® Nivel Plata (Versión 3.1) Health Product Declaration (HPD) Divulgado 1,000 ppm NSF 140 Oro
Indoor Air Quality	CRI Green Label Plus (GLP) GLP8472
Climate Impact	
Environmental Product Declaration (EPD)	Certificado Tercerizado De Acuerdo Con La Norma ISO14044, ISO14025 & EN15804
Embodied Carbon (Cradle to Gate)	12 kg CO ₂ /m ²
Total Recycled Content	<1% (Pre-Consumer <1% Post-Consumer 0%)
Product Packaging	100% Recyclable
Global Product Assessment	CE Marking (EN 14041) Certificado Tercerizado Environmental Guarantee* Re[turn] Reclamation Program* Pickup & Delivery Available Country of Origin** Imported


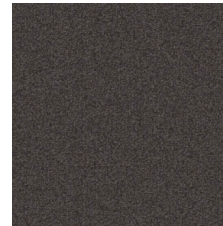
Well V2 Contribution Credit

X08 Hazardous Material Reduction Part 1: Limit Hazardous Materials Optimization – 1 pt	C2C Nivel Plata (Versión 3.1)
X10 Volatile Compound Reduction Part 1 (A): Manage Volatile Organic Compounds (VOCs) Optimization – 1 pt	C2C Nivel Plata (Versión 3.1)
X11 Long Term Emissions Control Part 2: Flooring Optimization – 1 pt	Green Label Plus Certificationglp8472
X13 Enhanced Material Precaution Part 1: Select Optimized Materials Optimization – max 2 pts	C2C Nivel Plata (Versión 3.1)
X14 Material Transparency Part 1: Promote Ingredient Disclosure Optimization – max 2 pts	C2C Nivel Plata (Versión 3.1)

Contribución Para Créditos Leed

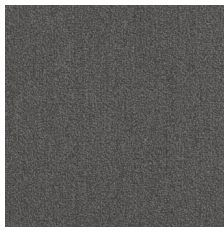
Crédito MR: Divulgación y optimización de productos de construcción Declaraciones ambientales de productos - Opción 1: Declaración ambiental de productos (EPD)	3rd Party Certified in Accordance with ISO14044, ISO14025 & EN15804
Crédito MR: Divulgación y optimización de productos de construcción Ingredientes de materiales - Opción 1: Informe de ingredientes de los materiales	C2C Nivel Plata (Versión 3.1)
Crédito MR: Divulgación y optimización de productos de construcción Ingredientes de materiales - Opción 2: Optimización de ingredientes de los materiales	C2C Nivel Plata (Versión 3.1)
Crédito EQ: Materiales de baja emisión Opción 1: Cálculos de categoría de producto	Certificación Green Label Plus: GLP8472

Available Colorways

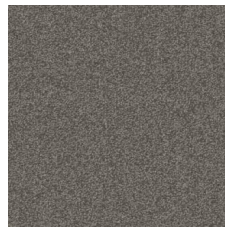
					
Beige 34100 LRV 33.9 L* 64.88	Straw 34103 LRV 26.3 L* 58.29	Greige 34105 LRV 24.9 L* 57	Ceramic Glaze 34110 LRV 19.5 L* 51.24	 Sandstone 34111 LRV 17.8 L* 49.31	French Silver 34150 LRV 17.5 L* 48.92
					
Bronze Sheen 34156 LRV 16.2 L* 47.26	Topaz 34170 LRV 14.1 L* 44.44	Blissful Yellow 34220 LRV 26.3 L* 58.35	Limelight 34328 LRV 17.3 L* 48.64	 Essential 34330 LRV 10.7 L* 39.09	Blue Haze 34402 LRV 9.5 L* 36.91
					
Waterside 34456 LRV 9.7 L* 37.3	Deep Teal 34481 LRV 5.6 L* 28.27	 Sapphire Blue 34485 LRV 4.7 L* 25.72	 Charcoal 34500 LRV 4.5 L* 25.2	 Total Eclipse 34505 LRV 3.5 L* 21.9	Adrift 34512 LRV 16.3 L* 47.33
					
Warm Grey 34518 LRV 19.3 L* 50.98	Cool Grey 34535 LRV 17.1 L* 48.32	Grey 34580 LRV 10.5 L* 38.77	Element 34583 LRV 11.4 L* 40.24	 Mercury 34585 LRV 11.2 L* 39.98	 Mystique 34590 LRV 6.3 L* 30.12
					
 Cobble Grey 34595 LRV 12.4 L* 41.92	Slate 34597 LRV 6.3 L* 30.2	Green Grove 34701 LRV 8.7 L* 35.31	Branch 34730 LRV 9.3 L* 36.54	 Char Brown 34740 LRV 5.3 L* 27.48	 Mocha 34750 LRV 5.1 L* 27.08



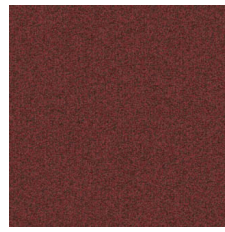
Driftwood 34755
LRV 11.6 | L* 40.52



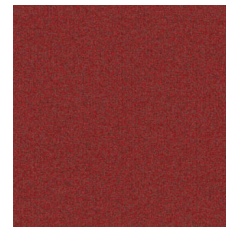
Taupe 34760
LRV 8.5 | L* 35



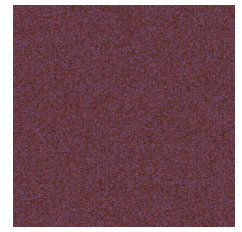
Bird's Eye 34761
LRV 10.5 | L* 38.66



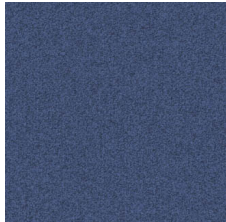
Firefly 34858
LRV 6 | L* 28.45




In The Red 34870
LRV 6.5 | L* 30.64



Rose Wine 34879
LRV 5.8 | L* 28.94



Electric Blue 34988
LRV 6.9 | L* 31.57

 **Quick Ship** 2 semanas: hasta 2,500 yardas cuadradas desde EE. UU.

Información Adicional

* To learn more about the recyclability of our products and our Environmental Guarantee, please visit shawcontract.com/sustainability.

**Meets or exceeds all local and national regulations in country of manufacture. (Manufactured in an ISO 9001 & ISO 14001 certified facility or equivalent)

***This carpet is manufactured to be ADA compliant, but to be fully ADA compliant, the end-user must ensure the carpet is adhered to the floor and installed as outlined in the ADA standards.

[Installation Guidelines](#)

[Maintenance Guidelines](#)

Specifications are subject to nominal manufacturing variance. Material supply and/or manufacturing processes may necessitate changes without notice.

This product is an exclusive design and may not be duplicated in any manner. Use of this design in the creation of another product design is also strictly prohibited.

Visit shawcontract.com/testing for more information.



PVC-Free

Corporate Headquarters +1 800 257 7429 | +1 706 532 7984 | Atlanta +1 404 853 7429 | Bengaluru +91 80 6773 0202 | Beijing +86 10 6568 588 | Chicago +1 312 467 1331 | Dubai +971 4 584 6956 | Hong Kong +852 2623 0371 | London +44 207 961 4120 | Los Angeles +1 800 233 1614 | Melbourne +61 3 9939 8543 | Mexico City +55 5010 7600 | Mumbai +91 22 6284 5050 | Nantong +86 400 800 7429 | New York +1 212 953 7429 | Paris +33 (0) 1 81 22 44 39 | San Francisco +1 415 955 1920 | Shanghai +86 21 3338 4000 | Singapore +65 6733 1811 | Sydney +61 800 556 302

© 2025 Shaw Industries Group, Inc., a Berkshire Hathaway Company
July 28, 2025

4 of 4