

Gradient

| | |
|----------|--|
| 製品型 | Broadloom |
| コレクション | Shade |
| スタイルナンバー | 5A153 |
| 建設 | グラフィックループ |
| ファイバ | エコソリューションQ®ナイロン |
| 染色法 | 100% 原液着色 |
| 一次バックイング | 合成 |
| 二次バックイング | Classicbac® |
| 保護治療 | SSP®shaw 土壌保護保証 |
| 推奨接着剤 | 1000 Broadloom 4 Gallon, Shaw 1200 or 3800 Indoor Outdoor Broadloom 4 Gallon |

| | | |
|--------------------|--------------------------|-------------------------|
| | u.s. | metric |
| 商品のサイズ | 12 ft | 3.66 m |
| ゲージ | 1/8 in | 31.5 per 10 cm |
| ステッチ | 12.0 per in | 47.5 per 10 cm |
| 完成した杭の厚さ | 0.098 in | 2.49 mm |
| 平均密度 | 11020 oz/yd ³ | 0.408 g/cm ³ |
| キロテックス | | 13.58 |
| 総厚 | 0.278 in | 7.06 mm |
| 房状の重量 | 30 oz/yd ² | 1017.2 g/m ² |
| インストールパターン リピート | None | |



推奨インストール方法

Direct Glue, Double Glue, Stretch-In

データ + テスト

| | |
|----------------------------|---|
| 錠剤テスト | Pass |
| 放射パネル (astm E648) | Class I |
| Nbs煙 | Less Than 450 |
| 静電気の傾向 | Less Than 3.5 kv |
| Cri Green Label Plus (glp) | GLP8472 |
| Adaコンプライアンス | >0.6、ADA 歩行面およびアクセス可能ルート用推奨静摩擦係数の基準に合致*** |

Test Reports may be included or listed by the manufacturing/inventory style number as opposed to the noted selling style number.

保証

10年間の商用限定保証

コーディネート商品

Broadloom: **Tint, Tone**

属性+認定

Health & Wellbeing

Material Ingredient Transparency

Indoor Air Quality

Cradle to Cradle Certified® | シルバーレベル (バージョン 3.1)
NSF 140 | ゴールド
CRI Green Label Plus (GLP) | GLP8472

Climate Impact

Environmental Product Declaration (EPD)

Total Recycled Content

Product Packaging

ISO14044、ISO14025 および EN15804 に基づく 第三者認証取得
<1% (Pre-Consumer <1% | Post-Consumer 0%)
100% リサイクル可能

Global Product Assessment

CE Marking (EN 14041) | 第三者認証取得
Environmental Guarantee* | Re[turn] Reclamation Program* | Pickup & Delivery Available
Country of Origin** | Imported

グリーンリード貢献クレジット

MRクレジット：製品の開示と最適化の構築
環境製品宣言-オプション1：環境製品宣言 (EPD)

MRクレジット：製品の開示と最適化の構築
材料成分-オプション1：材料成分レポート

MRクレジット：製品の開示と最適化の構築
材料成分-オプション2：材料成分の最適化

EQクレジット：低排出材料
オプション1：製品カテゴリの計算

3rd Party Certified in Accordance with ISO14044, ISO14025 & EN15804

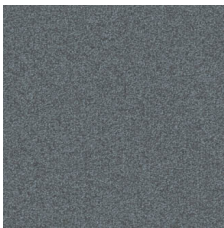
C2C Silver Level (Version 3.1)

C2C Silver Level (Version 3.1)

Green Label Plus Certification: GLP8472

Available Colorways

| | | | | | |
|---|------------------------------------|--|--|--|--|
| Beige 34100 LRV 33.9 L* 64.88 | Straw 34103 LRV 26.3 L* 58.29 | Greige 34105 LRV 24.9 L* 57 | Ceramic Glaze 34110 LRV 19.5 L* 51.24 | Sandstone 34111 LRV 17.8 L* 49.31 | French Silver 34150 LRV 17.5 L* 48.92 |
| Bronze Sheen 34156 LRV 16.2 L* 47.26 | Topaz 34170 LRV 14.1 L* 44.44 | Blissful Yellow 34220 LRV 26.3 L* 58.35 | Limelight 34328 LRV 17.3 L* 48.64 | Essential 34330 LRV 10.7 L* 39.09 | Blue Haze 34402 LRV 9.5 L* 36.91 |



Waterside 34456
LRV 9.7 | L* 37.3



Deep Teal 34481
LRV 5.6 | L* 28.27



Sapphire Blue 34485
LRV 4.7 | L* 25.72



Charcoal 34500
LRV 4.5 | L* 25.2



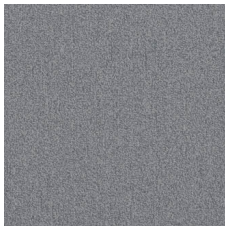
Total Eclipse 34505
LRV 3.5 | L* 21.9



Adrift 34512
LRV 16.3 | L* 47.33



Warm Grey 34518
LRV 19.3 | L* 50.98



Cool Grey 34535
LRV 17.1 | L* 48.32



Grey 34580
LRV 10.5 | L* 38.77



Element 34583
LRV 11.4 | L* 40.24



Mercury 34585
LRV 11.2 | L* 39.98



Mystique 34590
LRV 6.3 | L* 30.12



Cobble Grey 34595
LRV 12.4 | L* 41.92



Slate 34597
LRV 6.3 | L* 30.2



Green Grove 34701
LRV 8.7 | L* 35.31



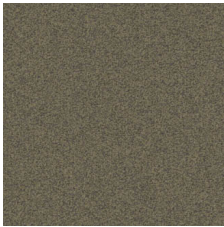
Branch 34730
LRV 9.3 | L* 36.54



Char Brown 34740
LRV 5.3 | L* 27.48



Mocha 34750
LRV 5.1 | L* 27.08



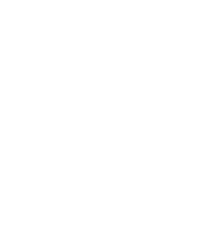
Driftwood 34755
LRV 11.6 | L* 40.52



Taupe 34760
LRV 8.5 | L* 35



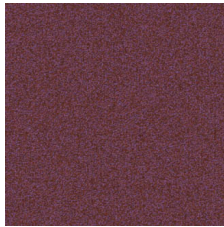
Bird's Eye 34761
LRV 10.5 | L* 38.66



Firefly 34858
LRV 6 | L* 28.45



In The Red 34870
LRV 6.5 | L* 30.64



Rose Wine 34879
LRV 5.8 | L* 28.94



Electric Blue 34988
LRV 6.9 | L* 31.57

追加情報

* To learn more about the recyclability of our products and our Environmental Guarantee, please visit shawcontract.com/sustainability.

**Meets or exceeds all local and national regulations in country of manufacture. (Manufactured in an ISO 9001 & ISO 14001 certified facility or equivalent)

***This carpet is manufactured to be ADA compliant, but to be fully ADA compliant, the end-user must ensure the carpet is adhered to the floor and installed as outlined in the ADA standards.

[Installation Guidelines](#)

[Maintenance Guidelines](#)

Specifications are subject to nominal manufacturing variance. Material supply and/or manufacturing processes may necessitate changes without notice.

This product is an exclusive design and may not be duplicated in any manner. Use of this design in the creation of another product design is also strictly prohibited.

Visit shawcontract.com/testing for more information.



PVC-Free

Corporate Headquarters +1 800 257 7429 | +1 706 532 7984 | Atlanta +1 404 853 7429 | Bengaluru +91 80 6773 0202 | Beijing +86 10 6568 588 | Chicago +1 312 467 1331 | Dubai +971 4 584 6956 | Hong Kong +852 2623 0371 | Latin America (Miami) +1 305 827 5912 | London +44 207 961 4120 | Los Angeles +1 800 233 1614 | Melbourne +61 3 9939 8543 | Mexico City +55 5010 7600 | Mumbai +91 22 6284 5050 | Nantong +86 400 800 7429 | New York +1 212 953 7429 | Paris +33 (0) 1 81 22 44 39 | San Francisco +1 415 955 1920 | Santiago +562 2431 5000 x 550 | São Paulo +55 11 3071 1702 | Shanghai +86 21 3338 4000 | Singapore +65 6733 1811 | Sydney +61 800 556 302