


Gradient

| | | |
|-----------------------------|---------------------------|----------------|
| Product Type | Broadloom | |
| Collection | Shade | |
| Style Number | 5A153 | |
| Construction | Graphic Loop | |
| Fiber | Ecosolution Q® Nylon | |
| Dye Method | 100% Solution Dyed | |
| Primary Backing | Synthetic | |
| Secondary Backing | Classicbac® | |
| Protective Treatments | SSP® Shaw Soil Protection | |
| Recommended Adhesive | H1000, H1200 or H3800 | |
| | u.s. | metric |
| Product Size | 12 ft | 3.66 m |
| Gauge | 1/8 in | 31.5 per 10 cm |
| Stitches | 12.0 per in | 47.5 per 10 cm |
| Average Density | 11020 oz/yd³ | 0.408 g/cm³ |
| Kilotex | | 13.58 |
| Total Thickness | 0.278 in | 7.06 mm |
| Tufted Weight | 30 oz/yd² | 1017.2 g/m² |
| Installation Pattern Repeat | None | |



Recommended Installation Method

Direct Glue, Double Glue, Stretch-In

Data + Testing

| | |
|----------------------------|--|
| Pill Test | Pass |
| Radiant Panel | Class I |
| Nbs Smoke | Less Than 450 |
| Electrostatic Propensity | Less Than 3.5 kv |
| Cri Green Label Plus (Glp) | GLP8472 |
| Ada Compliance | >0.6, Meets the recommended static coefficient of friction for ADA walking surfaces and accessible routes*** |

Test Reports may be included or listed by the manufacturing/inventory style number as opposed to the noted selling style number.

Warranties

10 Year Commercial Limited

Coordinating Products

Carpet Tile: **Gradient Tile**
Broadloom: **Tint, Tone**

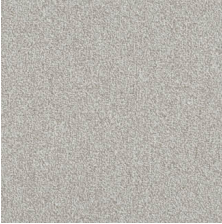

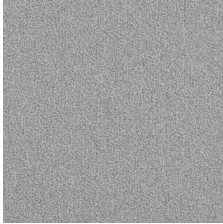
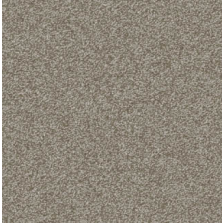
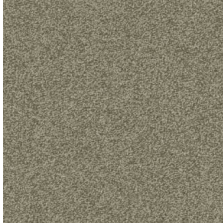
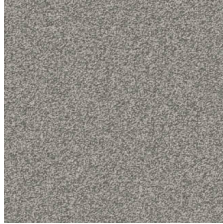





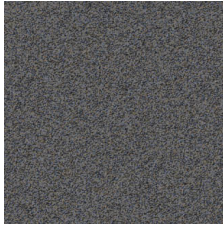
Material Health & Environmental Certifications

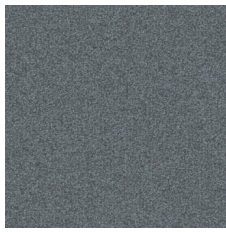
| | |
|---|---|
| Health & Wellbeing | |
| Material Ingredient Transparency | Cradle to Cradle Certified® Silver Level (Version 3.1) NSF 140 Gold |
| Indoor Air Quality | CRI Green Label Plus (GLP) GLP8472 |
| Climate Impact | |
| Environmental Product Declaration (EPD) | 3rd Party Certified in Accordance with ISO14044, ISO14025 & EN15804 |
| Total Recycled Content | <1% (Pre-Consumer <1% Post-Consumer 0%) |
| Product Packaging | 100% Recyclable |
| Global Product Assessment | CE Marking (EN 14041) 3rd Party Certified Environmental Guarantee* Re[turn] Reclamation Program* Pickup & Delivery Available Country of Origin** USA |

Green Leed Contribution Credit

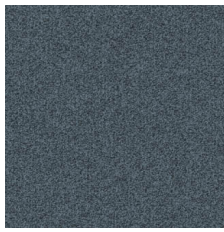
| | |
|---|--|
| MR Credit: Building Product Disclosure and Optimization Environmental Product Declarations - Option 1: Environmental Product Declaration (EPD) | 3rd Party Certified in Accordance with ISO14044, ISO14025 & EN15804 |
| MR Credit: Building Product Disclosure and Optimization Material Ingredients - Option 1: Material Ingredient Reporting | C2C Silver Level (Version 3.1) |
| MR Credit: Building Product Disclosure and Optimization Material Ingredients - Option 2: Material Ingredient Optimization | C2C Silver Level (Version 3.1) |
| EQ Credit: Low Emitting Materials Option 1: Product Category Calculations | Green Label Plus Certification: GLP8472 |

Available Colorways

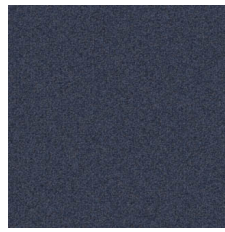
| | | | | | |
|--|--|--|---|--|--|
|  Beige 34100 LRV 33.9 |  Straw 34103 LRV 26.3 |  Greige 34105 LRV 24.9 |  Ceramic Glaze 34110 LRV 19.5 |  Sandstone 34111 LRV 17.8 |  French Silver 34150 LRV 17.5 |
|  Bronze Sheen 34156 LRV 16.2 |  Topaz 34170 LRV 14.1 |  Blissful Yellow 34220 LRV 26.3 |  Limelight 34328 LRV 17.3 |  Essential 34330 LRV 10.7 |  Blue Haze 34402 LRV 9.5 |



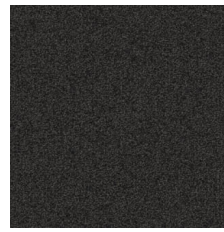
Waterside 34456
LRV 9.7



Deep Teal 34481
LRV 5.6



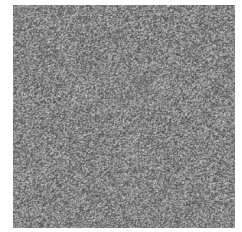
Sapphire Blue 34485
LRV 4.7



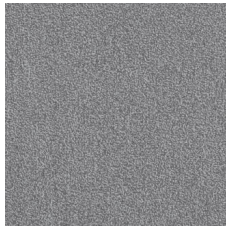
Charcoal 34500
LRV 4.5



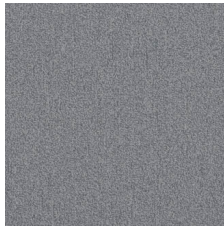
Total Eclipse 34505
LRV 3.5



Adrift 34512
LRV 16.3



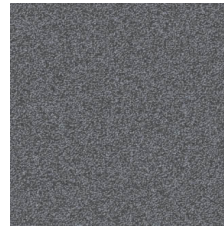
Warm Grey 34518
LRV 19.3



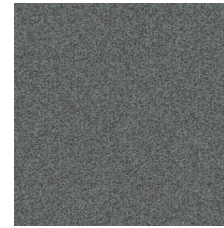
Cool Grey 34535
LRV 17.1



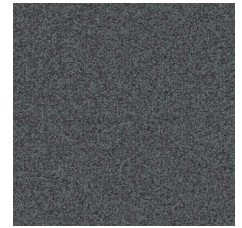
Grey 34580
LRV 10.5



Element 34583
LRV 11.4



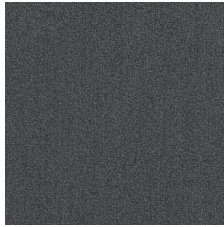
Mercury 34585
LRV 11.2



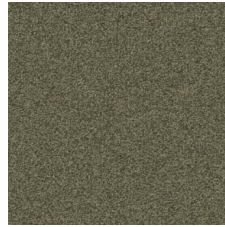
Mystique 34590
LRV 6.3



Cobble Grey 34595
LRV 12.4



Slate 34597
LRV 6.3



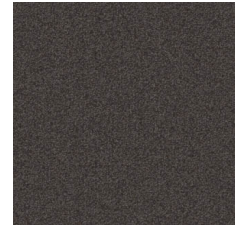
Green Grove 34701
LRV 8.7



Branch 34730
LRV 9.3



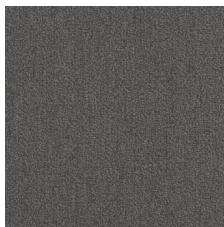
Char Brown 34740
LRV 5.3



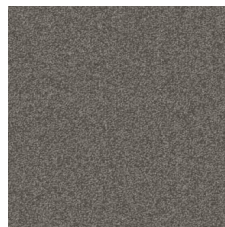
Mocha 34750
LRV 5.1



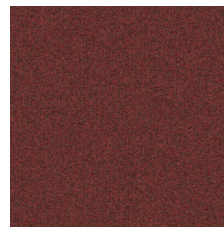
Driftwood 34755
LRV 11.6



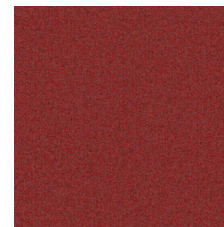
Taupe 34760
LRV 8.5



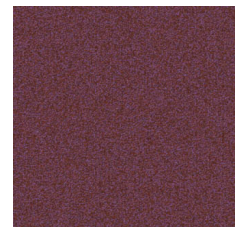
Bird's Eye 34761
LRV 10.5



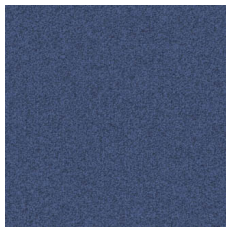
Firefly 34858
LRV 6



In The Red 34870
LRV 6.5



Rose Wine 34879
LRV 5.8



Electric Blue 34988
LRV 6.9

 **Quick Ship** 8 Weeks

Additional Information

* To learn more about the recyclability of our products and our Environmental Guarantee, please visit shawcontract.com/sustainability.

**Meets or exceeds all local and national regulations in country of manufacture. (Manufactured in an ISO 9001 & ISO 14001 certified facility or equivalent)

***This carpet is manufactured to be ADA compliant, but to be fully ADA compliant, the end-user must ensure the carpet is adhered to the floor and installed as outlined in the ADA standards.

[Installation Guidelines](#)

[Maintenance Guidelines](#)

Specifications are subject to nominal manufacturing variance. Material supply and/or manufacturing processes may necessitate changes without notice.

This product is an exclusive design and may not be duplicated in any manner. Use of this design in the creation of another product design is also strictly prohibited.

Visit shawcontract.com/testing for more information.



PVC-Free

Corporate Headquarters +1 800 257 7429 | +1 706 532 7984 | **Atlanta** +1 404 853 7429 | **Bengaluru** +91 80 6773 0202 | **Beijing** +86 10 6568 588 | **Chicago** +1 312 467 1331 | **Dubai** +971 4 584 6956 | **Hong Kong** +852 2623 0371 | **Latin America (Miami)** +1 305 827 5912 | **London** +44 207 961 4120 | **Los Angeles** +1 800 233 1614 | **Melbourne** +61 3 9939 8543 | **Mexico City** +55 5010 7600 | **Mumbai** +91 22 6284 5050 | **Nantong** +86 400 800 7429 | **New York** +1 212 953 7429 | **Paris** +33 (0) 1 81 22 44 39 | **San Francisco** +1 415 955 1920 | **Santiago** +562 2431 5000 x 550 | **São Paulo** +55 11 3071 1702 | **Shanghai** +86 21 3338 4000 | **Singapore** +65 6733 1811 | **Sydney** +1 800 556 302