

Gradient

Tipo De Producto	Broadloom
Colección	Shade
Número De Estilo	5A153
Construcción	Bucle Gráfico
Fibra	Ecosolution Q® Nylon
Método De Teñido	100% Solution Dyed
Base Primaria	Sintético
Base Secundaria	Classicbac®
Tratamientos Protectores	SSP® Shaw Protección Para El Piso
Adhesivo Recomendado	H1000, H1200 or H3800

	u.s.	metric
Tamaño Del Producto	12 ft	3.66 m
Gauge	1/8 in	31.5 per 10 cm
Puntadas	12.0 per in	47.5 per 10 cm
Densidad Media	11020 oz/yd³	0.408 g/cm³
Kilotex		13.58
Espesor Total	0.278 in	7.06 mm
Peso De La Fibra	30 oz/yd²	1017.2 g/m²
Repetición Del Patrón De Instalación	None	



Método De Instalación Recomendado

Direct Glue, Double Glue, Stretch-In

Datos + Pruebas

Prueba De Pastillas (Pill)	Pass
Panel Radiante (Astm E648)	Class I
Nbs Humo	Less Than 450
Propensión Electrostática	Less Than 3.5 kv
Cri Green Label Plus (Glp)	GLP8472
Ada Compliance	≥0.6, Cumple con las recomendaciones para el coeficiente de fricción estática para superficies transitables ADA y rutas accesibles***

Test Reports may be included or listed by the manufacturing/inventory style number as opposed to the noted selling style number.

Garantías

10 Años Limitado A USo Comercial

Productos Que Combinan

Carpet Tile: **Gradient Tile**
Broadloom: **Tint, Tone**

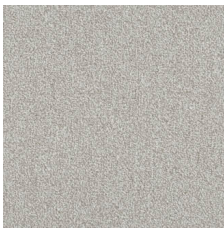

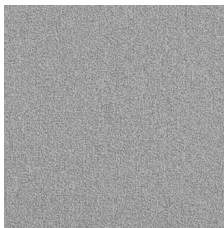
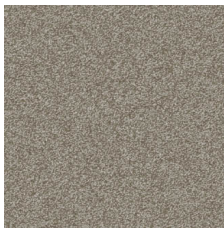
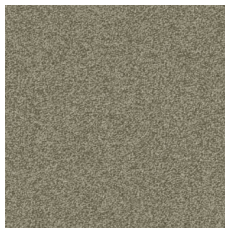
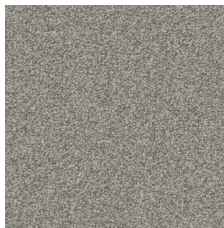

Atributos + Certificaciones

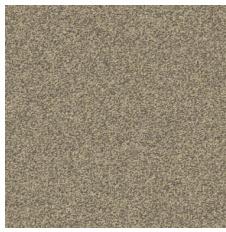
Health & Wellbeing	
Material Ingredient Transparency	Cradle to Cradle Certified® Nivel Plata (Versión 3.1) NSF 140 Oro
Indoor Air Quality	CRI Green Label Plus (GLP) GLP8472
Climate Impact	
Environmental Product Declaration (EPD)	Certificado Tercerizado De Acuerdo Con La Norma ISO14044, ISO14025 & EN15804
Total Recycled Content	<1% (Pre-Consumer <1% Post-Consumer 0%)
Product Packaging	100% Recyclable
Global Product Assessment	CE Marking (EN 14041) Certificado Tercerizado Environmental Guarantee* Re[turn] Reclamation Program* Pickup & Delivery Available Country of Origin** Imported

Contribución Para Créditos Leed

Crédito MR: Divulgación y optimización de productos de construcción Declaraciones ambientales de productos - Opción 1: Declaración ambiental de productos (EPD)	3rd Party Certified in Accordance with ISO14044, ISO14025 & EN15804
Crédito MR: Divulgación y optimización de productos de construcción Ingredientes de materiales - Opción 1: Informe de ingredientes de los materiales	C2C Silver Level (Version 3.1)
Crédito MR: Divulgación y optimización de productos de construcción Ingredientes de materiales - Opción 2: Optimización de ingredientes de los materiales	C2C Silver Level (Version 3.1)
Crédito EQ: Materiales de baja emisión Opción 1: Cálculos de categoría de producto	Green Label Plus Certification: GLP8472

Available Colorways

					
Beige 34100 LRV 33.9	Straw 34103 LRV 26.3	Greige 34105 LRV 24.9	Ceramic Glaze 34110 LRV 19.5	 Sandstone 34111 LRV 17.8	French Silver 34150 LRV 17.5



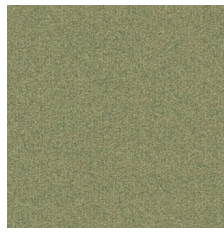
Bronze Sheen 34156
LRV 16.2



Topaz 34170
LRV 14.1



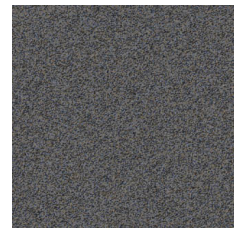
Blissful Yellow 34220
LRV 26.3



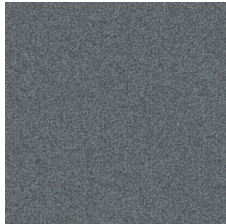
Limelight 34328
LRV 17.3



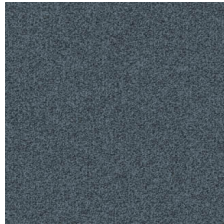
Essential 34330
LRV 10.7



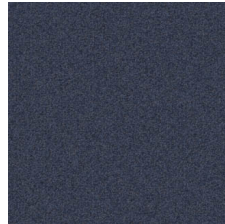
Blue Haze 34402
LRV 9.5



Waterside 34456
LRV 9.7



Deep Teal 34481
LRV 5.6



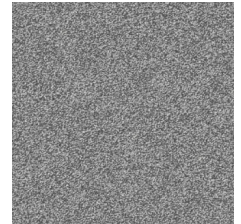
Sapphire Blue
34485
LRV 4.7



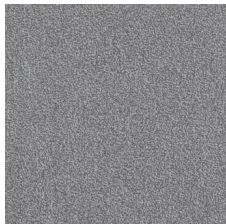
Charcoal 34500
LRV 4.5



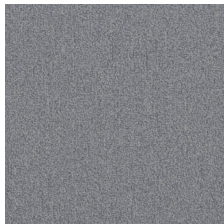
Total Eclipse 34505
LRV 3.5



Adrift 34512
LRV 16.3



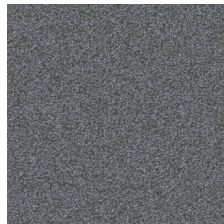
Warm Grey 34518
LRV 19.3



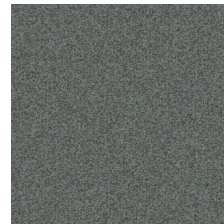
Cool Grey 34535
LRV 17.1



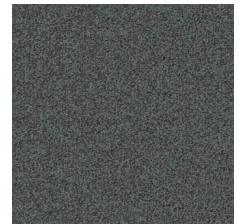
Grey 34580
LRV 10.5



Element 34583
LRV 11.4



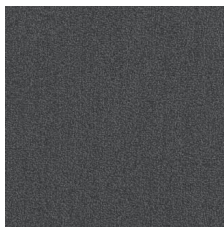
Mercury 34585
LRV 11.2



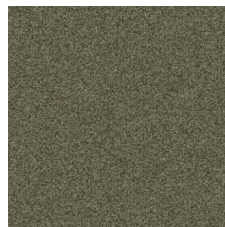
Mystique 34590
LRV 6.3



Cobble Grey 34595
LRV 12.4



Slate 34597
LRV 6.3



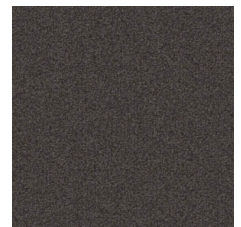
Green Grove 34701
LRV 8.7



Branch 34730
LRV 9.3



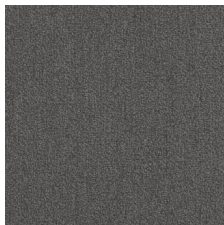
Char Brown 34740
LRV 5.3



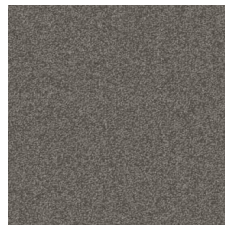
Mocha 34750
LRV 5.1



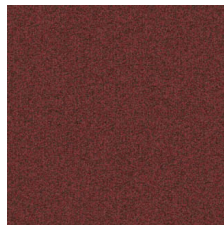
Driftwood 34755
LRV 11.6



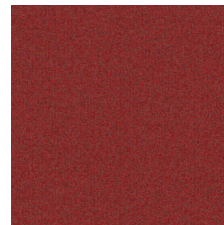
Taupe 34760
LRV 8.5



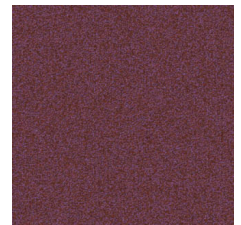
Bird's Eye 34761
LRV 10.5



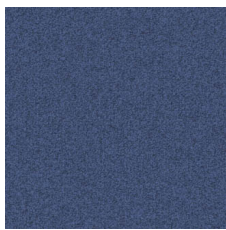
Firefly 34858
LRV 6




In The Red 34870
LRV 6.5



Rose Wine 34879
LRV 5.8



Electric Blue 34988
LRV 6.9

 **Quick Ship** 2 semanas: hasta 2,500 yardas cuadradas desde EE. UU.

Información Adicional

* To learn more about the recyclability of our products and our Environmental Guarantee, please visit shawcontract.com/sustainability.

**Meets or exceeds all local and national regulations in country of manufacture. (Manufactured in an ISO 9001 & ISO 14001 certified facility or equivalent)

***This carpet is manufactured to be ADA compliant, but to be fully ADA compliant, the end-user must ensure the carpet is adhered to the floor and installed as outlined in the ADA standards.

[Installation Guidelines](#)

Maintenance Guidelines

Specifications are subject to nominal manufacturing variance. Material supply and/or manufacturing processes may necessitate changes without notice.

This product is an exclusive design and may not be duplicated in any manner. Use of this design in the creation of another product design is also strictly prohibited.

Visit shawcontract.com/testing for more information.

