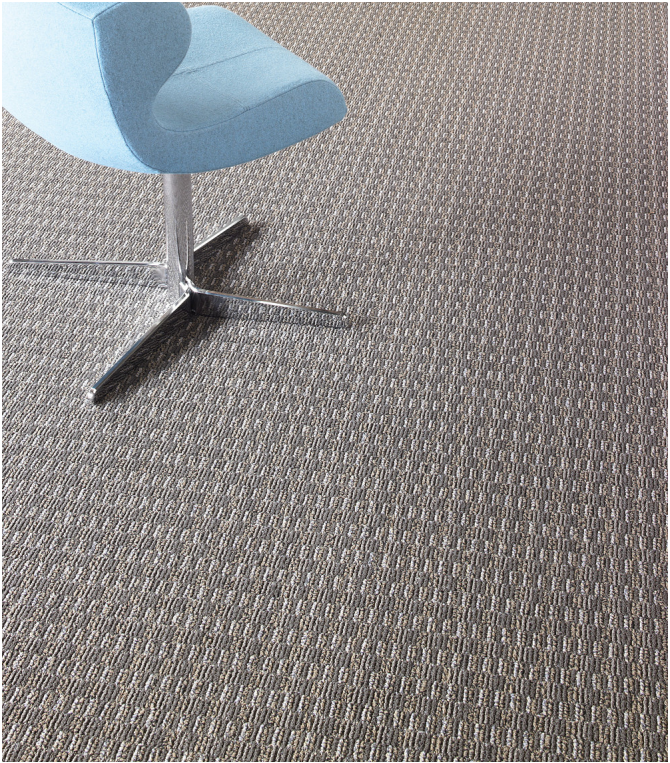


Flare

상품 유형	Broadloom
수집	Brightwork
스타일 번호	5A175
구성	그래픽 루프식
섬유	Ecosolution Q® 나일론
염료 방법	100% 원착 염색
기본 백업	합성
보조 백업	Classicbac®
보호 처리	SSP® Shaw 흠먼지 보호
권장 접착제	1000 Broadloom 4 Gallon or 3800 Indoor Outdoor Broadloom 4 Gallon

	u.s.	metric
제품 크기	12 ft	3.66 m
계량기	1/8 in	31.5 per 10 cm
스티치	11.5 per in	45.0 per 10 cm
완성 된 말뚝 두께	0.149 in	3.78 mm
평균 밀도	5799 oz/yd ³	0.215 g/cm ³
킬로 텍스		12.22
총 두께	0.296 in	7.52 mm
술을다는 무게	24 oz/yd ²	813.7 g/m ²
설치 패턴 반복	1.5 in w x 3.06 in l	3.81 cm w x 7.77 cm l



권장 설치 방법

Direct Glue, Double Glue, Stretch-In

데이터 + 테스트

알약 테스트	Pass
복사 패널 (Astm E648)	Class I
Nbs 연기	Less Than 450
Cri 그린 라벨 플러스 (Glp)	GLP8472
Ada 준수	0.6 이상, ADA 보행 노면과 이용 가능한 경로의 권장 마찰계수 충족***

Test Reports may be included or listed by the manufacturing/inventory style number as opposed to the noted selling style number.

보증

10년 상용 제한

코디네이팅 제품

Broadloom: **Flicker**

속성 + 인증

Health & Wellbeing

Material Ingredient Transparency

Cradle to Cradle Certified® | Silver 레벨(버전 3.1)
Health Product Declaration (HPD) | 1,000ppm 노출
NSF 140 | 골드

Indoor Air Quality

CRI Green Label Plus (GLP) | GLP8472

Climate Impact

Environmental Product Declaration (EPD)

ISO14044, ISO14025 및 EN15804에 따라 타사 인증 획득

Embodied Carbon (Cradle to Gate)

12 kg CO₂/m²

Total Recycled Content

<1% (Pre-Consumer <1% | Post-Consumer 0%)

Product Packaging

100% 재활용 가능

Global Product Assessment

CE Marking (EN 14041) | 타사 인증 획득

Environmental Guarantee* | Re[turn] Reclamation Program* | Pickup & Delivery Available

Country of Origin | Imported**

Well V2 Contribution Credit

X08 Hazardous Material Reduction Part 1: Limit Hazardous Materials Optimization – 1 pt

C2C 실버 레벨 (버전 3.1)

X10 Volatile Compound Reduction Part 1 (A): Manage Volatile Organic Compounds (VOCs) Optimization – 1 pt

C2C 실버 레벨 (버전 3.1)

X11 Long Term Emissions Control Part 2: Flooring Optimization – 1 pt

Green Label Plus Certificationglp8472

X13 Enhanced Material Precaution Part 1: Select Optimized Materials Optimization – max 2 pts

C2C 실버 레벨 (버전 3.1)

X14 Material Transparency Part 1: Promote Ingredient Disclosure Optimization – max 2 pts

C2C 실버 레벨 (버전 3.1)

녹색의 공헌 기여 크레딧

MR 크레딧 : 제품 공개 및 최적화 구축
환경 제품 선언-옵션 1 : 환경 제품 선언 (EPD)

3rd Party Certified in Accordance with ISO14044, ISO14025 & EN15804

MR 크레딧 : 제품 공개 및 최적화 구축
재료 성분-옵션 1 : 재료 성분보고

C2C 실버 레벨 (버전 3.1)

MR 크레딧 : 제품 공개 및 최적화 구축
재료 성분-옵션 2 : 재료 성분 최적화

C2C 실버 레벨 (버전 3.1)

EQ 크레딧 : 저 발광 재료
옵션 1 : 제품 범주 계산

Green Label Plus 인증: GLP8472

Available Colorways



Golden 27150



Flashpoint 27485



Spark 27500



Starlight 27504



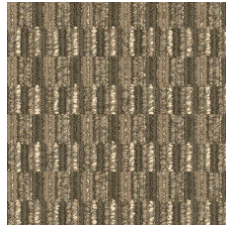
Moonlit 27505



Gleam 27585



Bronzed 27750



Afterglow 27755



Gloss 27761

추가 정보

* To learn more about the recyclability of our products and our Environmental Guarantee, please visit shawcontract.com/sustainability.

**Meets or exceeds all local and national regulations in country of manufacture. (Manufactured in an ISO 9001 & ISO 14001 certified facility or equivalent)

***This carpet is manufactured to be ADA compliant, but to be fully ADA compliant, the end-user must ensure the carpet is adhered to the floor and installed as outlined in the ADA standards.

[Installation Guidelines](#)

[Maintenance Guidelines](#)

Specifications are subject to nominal manufacturing variance. Material supply and/or manufacturing processes may necessitate changes without notice.

This product is an exclusive design and may not be duplicated in any manner. Use of this design in the creation of another product design is also strictly prohibited.

Visit shawcontract.com/testing for more information.



PVC-Free

Corporate Headquarters +1 800 257 7429 | +1 706 532 7984 | Atlanta +1 404 853 7429 | Bengaluru +91 80 6773 0202 | Beijing +86 10 6568 588 | Chicago +1 312 467 1331 | Dubai +971 4 584 6956 | Hong Kong +852 2623 0371 | London +44 207 961 4120 | Los Angeles +1 800 233 1614 | Melbourne +61 3 9939 8543 | Mexico City +55 5010 7600 | Mumbai +91 22 6284 5050 | Nantong +86 400 800 7429 | New York +1 212 953 7429 | Paris +33 (0) 1 81 22 44 39 | San Francisco +1 415 955 1920 | Shanghai +86 21 3338 4000 | Singapore +65 6733 1811 | Sydney +61 800 556 302

© 2025 Shaw Industries Group, Inc., a Berkshire Hathaway Company
July 1, 2025

3 of 3