

Illuminate

상품 유형	Broadloom
수집	Brightwork
스타일 번호	5A177
구성	다중 레벨 루프식
섬유	Ecosolution Q® 나일론
염료 방법	100% 원착 염색
기본 백업	폴리프로필렌
보조 백업	Ultraloc®
보호 처리	SSP® Shaw 휴먼지 보호
권장 접착제	H1000, H1200 or H3800

	u.s.	metric
제품 크기	12 ft	3.66 m
계량기	1/12 in	47.2 per 10 cm
스티치	10.5 per in	42.5 per 10 cm
평균 밀도	6769 oz/yd³	0.25 g/cm³
킬로 텍스		11.65
총 두께	0.273 in	6.93 mm
슬을다는 무게	22 oz/yd²	745.9 g/m²
설치 패턴 반복	24 in x 24 in	61 cm x 61 cm



권장 설치 방법

Direct Glue, Double Glue, Stretch-In

데이터 + 테스트

알약 테스트	Pass
복사 패널 (Astm E648)	Class I
Nbs 연기	Less Than 450
정전기 성향	Less Than 3.5 kv
Cri 그린 라벨 플러스 (Glp)	GLP2271
Ada 준수	0.6 이상, ADA 보행 노면과 이용 가능한 경로의 권장 마찰계수 충족***

Test Reports may be included or listed by the manufacturing/inventory style number as opposed to the noted selling style number.

보증

종신 상용 제한

코디네이팅 제품

Broadloom: **Flicker, Flare, Amplify**

속성 + 인증

Health & Wellbeing

Material Ingredient Transparency

Indoor Air Quality

Climate Impact

Environmental Product Declaration (EPD)

Total Recycled Content

Product Packaging

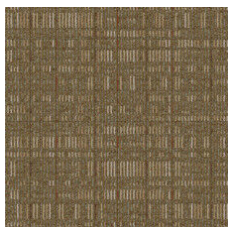
Global Product Assessment

Cradle to Cradle Certified® | Silver 레벨(버전 3.1)**NSF 140 | 골드****CRI Green Label Plus (GLP) | GLP2271****ISO14044, ISO14025 및 EN15804에 따라 타사 인증 획득****<1% (Pre-Consumer <1% | Post-Consumer 0%)****100% 재활용 가능****CE Marking (EN 14041) | 타사 인증 획득****Environmental Guarantee* | Re[turn] Reclamation Program* | Pickup & Delivery Available****Country of Origin** | Imported**

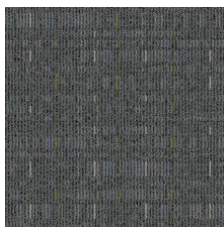
녹색의 공헌 기여 크레딧

MR 크레딧 : 제품 공개 및 최적화 구축
환경 제품 선언-옵션 1 : 환경 제품 선언 (EPD)MR 크레딧 : 제품 공개 및 최적화 구축
재료 성분-옵션 1 : 재료 성분보고MR 크레딧 : 제품 공개 및 최적화 구축
재료 성분-옵션 2 : 재료 성분 최적화EQ 크레딧 : 저 발광 재료
옵션 1 : 제품 범주 계산**3rd Party Certified in Accordance with ISO14044, ISO14025 & EN15804****C2C Silver Level (Version 3.1)****C2C Silver Level (Version 3.1)****Green Label Plus Certification: GLP2271**

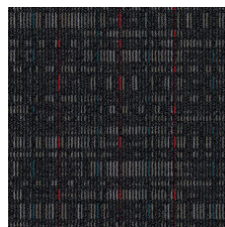
Available Colorways



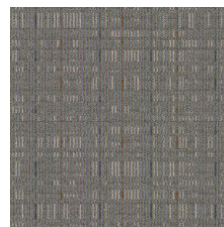
Golden 27150



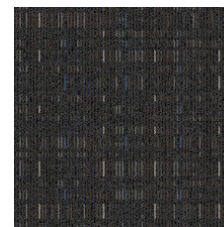
Flashpoint 27485



Spark 27500



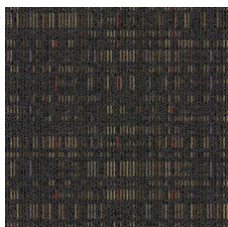
Starlight 27504



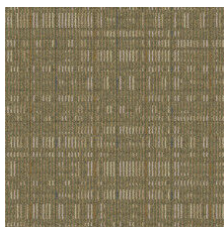
Moonlit 27505



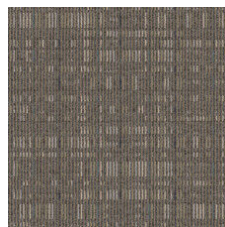
Gleam 27585



Bronzed 27750



Afterglow 27755



Gloss 27761

추가 정보

* To learn more about the recyclability of our products and our Environmental Guarantee, please visit shawcontract.com/sustainability.

**Meets or exceeds all local and national regulations in country of manufacture. (Manufactured in an ISO 9001 & ISO 14001 certified facility or equivalent)

***This carpet is manufactured to be ADA compliant, but to be fully ADA compliant, the end-user must ensure the carpet is adhered to the floor and installed as outlined in the ADA standards.

[Installation Guidelines](#)

[Maintenance Guidelines](#)

Specifications are subject to nominal manufacturing variance. Material supply and/or manufacturing processes may necessitate changes without notice.

This product is an exclusive design and may not be duplicated in any manner. Use of this design in the creation of another product design is also strictly prohibited.

Visit shawcontract.com/testing for more information.



PVC-Free

Corporate Headquarters +1 800 257 7429 | +1 706 532 7984 | Atlanta +1 404 853 7429 | Bengaluru +91 80 6773 0202 | Beijing +86 10 6568 588 | Chicago +1 312 467 1331 | Dubai +971 4 584 6956 | Hong Kong +852 2623 0371 | Latin America (Miami) +1 305 827 5912 | London +44 207 961 4120 | Los Angeles +1 800 233 1614 | Melbourne +61 3 9939 8543 | Mexico City +55 5010 7600 | Mumbai +91 22 6284 5050 | Nantong +86 400 800 7429 | New York +1 212 953 7429 | Paris +33 (0) 1 81 22 44 39 | San Francisco +1 415 955 1920 | Santiago +562 2431 5000 x 550 | São Paulo +55 11 3071 1702 | Shanghai +86 21 3338 4000 | Singapore +65 6733 1811 | Sydney +1 800 556 302