

Amplify

Type De Produit	Moquette EN Lé	
Collection	Brightwork	
Numéro Du Style	5A176	
Construction	Tufté Structuré Bouclé à Motif	
Fibre	Ecosolution Q® Nylon	
Méthode De Coloration	100% Solution Teinte	
Sous-couche Primaire	Polypropylène	
Sous-couche Secondaire	Ultraloc®	
Traitements Protecteurs	SSP® Shaw Protection Du Sol	
Adhésif Recommandé	H1000, H1200 or H3800	
	u.s.	metric
Dimensions Du Produit	12 ft	3.66 m
Jauge	1/12 in	47.2 per 10 cm
Points	10.5 per in	41.5 per 10 cm
Densité Moyenne	6769 oz/yd³	0.25 g/cm³
Kilotex		11.47
Epaisseur Du Velours	0.273 in	6.93 mm
Poids Tufté	22 oz/yd²	745.9 g/m²
Installation Répétition Du Motif	24 in x 30 in	60.96 cm x 76.2 cm



Méthodes d'Installation Conseillées

Direct Glue, Double Glue, Stretch-In

Données + Tests Et Essai

Test d'Inflammabilité	Pass
Panneau Rayonnant (Astm E648)	Class I
Nbs Smoke	Less Than 450
Propension Électrostatique	Less Than 3.5 kv
Label Cri Green Label Plus (GlP)	GLP2271
Ada Compliance	>0.6, Meets the recommended static coefficient of friction for ADA walking surfaces and accessible routes***

Test Reports may be included or listed by the manufacturing/inventory style number as opposed to the noted selling style number.

Garanties

Durée De Vie Commerciale Limitée

Coordination Des Produits

Carpet Tile: **Allure Tile, Shine Tile, Glimmer Tile**Broadloom: **Flicker, Flare, Illuminate**

Attributs + Certifications

Certification Cradle to Cradle™ (C2C)

Déclaration environnementale de produit (EPD)

NSF 140

CRI Green Label Plus (GLP)

Label CE (EN 14041)

garantie environnementale

contenu recyclé total

emballage du produit

pays d'origine

Silver Level (Version 3.1)**Certifié Par Un Organisme Tiers Conformément Aux Normes
ISO14044, ISO 14025 & EN15804**

or

GLP2271**Certifié Par Un Organisme Tiers****Re[turn] Reclamation Program* | Pickup & Delivery Available****<1% (Pre-Consumer <1% | Post-Consumer 0%)****100% Recyclable****USA**

Contribution À La Certification Leed

MR Credit: Building Product Disclosure and Optimisation
Environmental Product Declarations - Option 1: Environmental Product
Declaration (EPD)MR Credit: Building Product Disclosure and Optimisation
Material Ingredients - Option 1: Material Ingredient ReportingMR Credit: Building Product Disclosure and Optimisation
Material Ingredients - Option 2: Material Ingredient Optimization

"Crédit EQ : matériaux faibles émissions

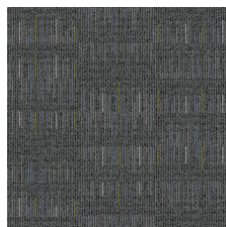
Option 1 : calculs par catégorie de produit"

3rd Party Certified in Accordance with ISO14044, ISO14025 & EN15804**C2C Silver Level (Version 3.1)****C2C Silver Level (Version 3.1)****Certified**

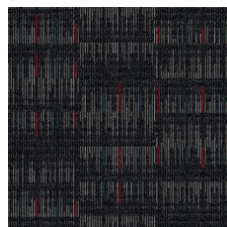
Available Colorways



Golden 27150



Flashpoint 27485



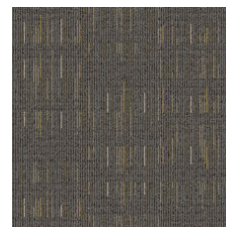
Spark 27500



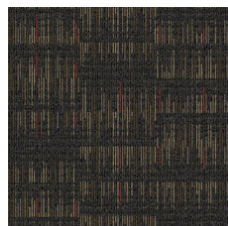
Starlight 27504



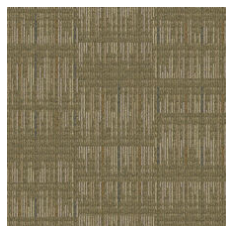
Moonlit 27505



Gleam 27585



Bronzed 27750



Afterglow 27755



Gloss 27761

Informations Supplémentaires

* To learn more about the recyclability of our products and our Environmental Guarantee, please visit shawcontract.com/sustainability.

**Meets or exceeds all local and national regulations in country of manufacture. (Manufactured in an ISO 9001 & ISO 14001 certified facility or equivalent)

***This carpet is manufactured to be ADA compliant, but to be fully ADA compliant, the end-user must ensure the carpet is adhered to the floor and installed as outlined in the ADA standards.

[Installation Guidelines](#)

[Maintenance Guidelines](#)

Specifications are subject to nominal manufacturing variance. Material supply and/or manufacturing processes may necessitate changes without notice.

This product is an exclusive design and may not be duplicated in any manner. Use of this design in the creation of another product design is also strictly prohibited.

Visit shawcontract.com/testing for more information.



PVC-Free

Corporate Headquarters +1 800 257 7429 | +1 706 532 7984 | **Atlanta** +1 404 853 7429 | **Bengaluru** +91 80 6773 0202 | **Beijing** +86 10 6568 588 | **Chicago** +1 312 467 1331 | **Dubai** +971 4 584 6956 | **Hong Kong** +852 2623 0371 | **Latin America (Miami)** +1 305 827 5912 | **London** +44 207 961 4120 | **Los Angeles** +1 800 233 1614 | **Melbourne** +61 3 9939 8543 | **Mexico City** +55 5010 7600 | **Mumbai** +91 22 6284 5050 | **Nantong** +86 400 800 7429 | **New York** +1 212 953 7429 | **Paris** +33 (0) 1 81 22 44 39 | **San Francisco** +1 415 955 1920 | **Santiago** +562 2431 5000 x 550 | **São Paulo** +55 11 3071 1702 | **Shanghai** +86 21 3338 4000 | **Singapore** +65 6733 1811 | **Sydney** +1 800 556 302