

Natural Selection

Product Type	Broadloom
Collection	Alternature
Style Number	5A179
Construction	Multi-Level Pattern/Cut Loop
Fibre	Ecosolution Q® Nylon
Primary Backing	Synthetic
Secondary Backing	Ultraloc®
Protective Treatments	SSP® Shaw Soil Protection
Recommended Adhesive	1000 Broadloom 4 Gallon or 3800 Indoor Outdoor Broadloom 4 Gallon

	u.s.	metric
Product Size	12 ft	3.66 m
Gauge	1/11 in	43.3 per 10 cm
Stitches	11.0 per in	43.0 per 10 cm
Finished Pile Thickness	0.178 in	4.52 mm
Average Density	8494 oz/yd³	0.314 g/cm³
Kilotex		11.19
Total Thickness	0.383 in	9.73 mm
Tufted Weight	42 oz/yd²	1424 g/m²
Installation Pattern Repeat	72 in x 96 in	1.83 m x 2.44 m



Recommended Installation Method

Direct Glue, Double Glue, Stretch-In

Data + Testing

Pill Test	Pass
Radiant Panel (Astm E648)	Class I
Nbs Smoke	Less Than 450
Electrostatic Propensity	Less Than 3.5 kv
Cri Green Label Plus (Glp)	GLP2271
Ada Compliance	>0.6, Meets the recommended static coefficient of friction for ADA walking surfaces and accessible routes***

Test Reports may be included or listed by the manufacturing/inventory style number as opposed to the noted selling style number.

Warranties

Lifetime Commercial Limited

Coordinating Products

Carpet Tile: **Entwine Tile, Earth Tone Tile, Ingrain Tile**

Broadloom: **Core, Grounded**

Attributes + Certifications

Health & Wellbeing

Material Ingredient Transparency

**Cradle to Cradle Certified® | Silver Level (Version 3.1)**  
**Health Product Declaration (HPD) | 1,000 ppm Disclosure**  
**NSF 140 | Gold**  
**CRI Green Label Plus (GLP) | GLP2271**

Indoor Air Quality

Climate Impact

Environmental Product Declaration (EPD)

Embodied Carbon (Cradle to Gate)

Total Recycled Content

Product Packaging

**3rd Party Certified in Accordance with ISO14044, ISO14025 & EN15804**  
**11.6 (based upon 27.41 oz face weight) kg CO<sub>2</sub>/m<sup>2</sup>**  
**<1% (Pre-Consumer <1% | Post-Consumer 0%)**  
**100% Recyclable**

Global Product Assessment

**CE Marking (EN 14041) | 3rd Party Certified**  
**Environmental Guarantee\* | Re[turn] Reclamation Program\* | Pickup & Delivery Available**  
**Country of Origin\*\* | USA**

Well V2 Contribution Credit

X08 Hazardous Material Reduction Part 1: Limit Hazardous Materials Optimization – 1 pt

**C2C Silver Level (Version 3.1)**

X10 Volatile Compound Reduction Part 1 (A): Manage Volatile Organic Compounds (VOCs) Optimization – 1 pt

**C2C Silver Level (Version 3.1)**

X11 Long Term Emissions Control Part 2: Flooring Optimization – 1 pt

**Green Label Plus Certification GLP2271**

X13 Enhanced Material Precaution Part 1: Select Optimized Materials Optimization – max 2 pts

**C2C Silver Level (Version 3.1)**

X14 Material Transparency Part 1: Promote Ingredient Disclosure Optimization – max 2 pts

**C2C Silver Level (Version 3.1)**

Green Leed Contribution Credit

MR Credit: Building Product Disclosure and Optimization  
Environmental Product Declarations - Option 1: Environmental Product Declaration (EPD)

**3rd Party Certified in Accordance with ISO14044, ISO14025 & EN15804**

MR Credit: Building Product Disclosure and Optimization  
Material Ingredients - Option 1: Material Ingredient Reporting

**C2C Silver Level (Version 3.1)**

MR Credit: Building Product Disclosure and Optimization  
Material Ingredients - Option 2: Material Ingredient Optimization

**C2C Silver Level (Version 3.1)**

EQ Credit: Low Emitting Materials  
Option 1: Product Category Calculations

**Green Label Plus Certification: GLP2271**

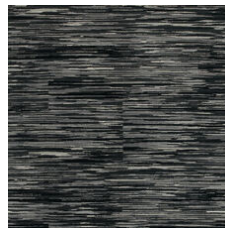
### Available Colorways



Alder 79109



Linden 79496



Koa 79505



Teak 79750



Iroko 79761

### Additional Information

\* To learn more about the recyclability of our products and our Environmental Guarantee, please visit [shawcontract.com/sustainability](https://shawcontract.com/sustainability).

\*\*Meets or exceeds all local and national regulations in country of manufacture. (Manufactured in an ISO 9001 & ISO 14001 certified facility or equivalent)

\*\*\*This carpet is manufactured to be ADA compliant, but to be fully ADA compliant, the end-user must ensure the carpet is adhered to the floor and installed as outlined in the ADA standards.

[Installation Guidelines](#)

[Maintenance Guidelines](#)

Specifications are subject to nominal manufacturing variance. Material supply and/or manufacturing processes may necessitate changes without notice.

This product is an exclusive design and may not be duplicated in any manner. Use of this design in the creation of another product design is also strictly prohibited.

Visit [shawcontract.com/testing](https://shawcontract.com/testing) for more information.



**PVC-Free**

Corporate Headquarters +1 800 257 7429 | +1 706 532 7984 | Atlanta +1 404 853 7429 | Bengaluru +91 80 6773 0202 | Beijing +86 10 6568 588 | Chicago +1 312 467 1331 | Dubai +971 4 584 6956 | Hong Kong +852 2623 0371 | London +44 207 961 4120 | Los Angeles +1 800 233 1614 | Melbourne +61 3 9939 8543 | Mexico City +55 5010 7600 | Mumbai +91 22 6284 5050 | Nantong +86 400 800 7429 | New York +1 212 953 7429 | Paris +33 (0) 1 81 22 44 39 | San Francisco +1 415 955 1920 | Shanghai +86 21 3338 4000 | Singapore +65 6733 1811 | Sydney +61 800 556 302

© 2025 Shaw Industries Group, Inc., a Berkshire Hathaway Company  
July 1, 2025

3 of 3