

Layer

Product Type	Broadloom	
Collection	Rewoven	
Style Number	5A183	
Construction	Multi-Level Pattern/Cut Loop	
Fiber	Ecosolution Q® Nylon	
Dye Method	100% Solution Dyed	
Primary Backing	Synthetic	
Secondary Backing	Ultraloc®	
Protective Treatments	SSP® Shaw Soil Protection	
Recommended Adhesive	1000 Broadloom 4 Gallon or 3800 Indoor Outdoor Broadloom 4 Gallon	
	u.s.	metric
Product Size	12 ft	3.66 m
Gauge	1/10 in	39.4 per 10 cm
Stitches	12.5 per in	49.0 per 10 cm
Finished Pile Thickness	0.118 in	3 mm
Average Density	6712 oz/yd³	0.248 g/cm³
Kilotex		11.39
Total Thickness	0.305 in	7.75 mm
Tufted Weight	22 oz/yd²	745.9 g/m²
Installation Pattern Repeat	14.4 in w x 36 in l	36.6 cm w x 91.44 cm l



Recommended Installation Method

Direct Glue, Double Glue, Stretch-In

Data + Testing

Pill Test	Pass
Radiant Panel	Class I
Nbs Smoke	Less Than 450
Electrostatic Propensity	Less Than 3.5 kv
Cri Green Label Plus (Glp)	GLP2271
Ada Compliance	>0.6, Meets the recommended static coefficient of friction for ADA walking surfaces and accessible routes***

Test Reports may be included or listed by the manufacturing/inventory style number as opposed to the noted selling style number.

Warranties

Lifetime Commercial Limited

Coordinating Products

Carpet Tile: **Sculpt Tile, Sculpt Loop Tile**  
Broadloom: **Dimension, Contour, Outline**

Material Health & Environmental Certifications

Health & Wellbeing	
Material Ingredient Transparency	<b>Cradle to Cradle Certified®   Silver Level (Version 3.1)</b> <b>Health Product Declaration (HPD)   1,000 ppm Disclosure</b> <b>NSF 140   Gold</b>
Indoor Air Quality	<b>CRI Green Label Plus (GLP)   GLP2271</b>
Climate Impact	
Environmental Product Declaration (EPD)	<b>3rd Party Certified in Accordance with ISO14044, ISO14025 &amp; EN15804</b>
Embodied Carbon (Cradle to Gate)	<b>11.6 (based upon 27.41 oz face weight) kg CO<sub>2</sub>/m<sup>2</sup></b>
Total Recycled Content	<b>&lt;1% (Pre-Consumer &lt;1%   Post-Consumer 0%)</b>
Product Packaging	<b>100% Recyclable</b>
Global Product Assessment	<b>CE Marking (EN 14041)   3rd Party Certified</b> <b>Environmental Guarantee*   Re[turn] Reclamation Program*   Pickup &amp; Delivery Available</b> <b>Country of Origin**   USA</b>

Well V2 Contribution Credit

X08 Hazardous Material Reduction Part 1: Limit Hazardous Materials Optimization – 1 pt	<b>C2C Silver Level (Version 3.1)</b>
X10 Volatile Compound Reduction Part 1 (A): Manage Volatile Organic Compounds (VOCs) Optimization – 1 pt	<b>C2C Silver Level (Version 3.1)</b>
X11 Long Term Emissions Control Part 2: Flooring Optimization – 1 pt	<b>Green Label Plus Certification GLP2271</b>
X13 Enhanced Material Precaution Part 1: Select Optimized Materials Optimization – max 2 pts	<b>C2C Silver Level (Version 3.1)</b>
X14 Material Transparency Part 1: Promote Ingredient Disclosure Optimization – max 2 pts	<b>C2C Silver Level (Version 3.1)</b>

Green Leed Contribution Credit

MR Credit: Building Product Disclosure and Optimization Environmental Product Declarations - Option 1: Environmental Product Declaration (EPD)	<b>3rd Party Certified in Accordance with ISO14044, ISO14025 &amp; EN15804</b>
MR Credit: Building Product Disclosure and Optimization Material Ingredients - Option 1: Material Ingredient Reporting	<b>C2C Silver Level (Version 3.1)</b>
MR Credit: Building Product Disclosure and Optimization Material Ingredients - Option 2: Material Ingredient Optimization	<b>C2C Silver Level (Version 3.1)</b>
EQ Credit: Low Emitting Materials Option 1: Product Category Calculations	<b>Green Label Plus Certification: GLP2271</b>

## Available Colorways



Bisque 83111  
LRV 17.8 | L\* 49.26



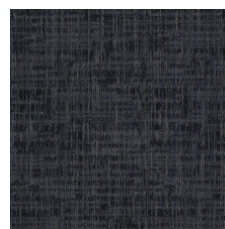
Cork 83170  
LRV 18.8 | L\* 50.46



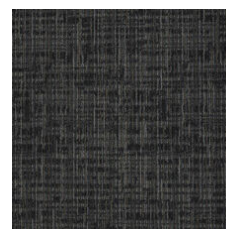
Nuance 83314  
LRV 7.1 | L\* 31.94



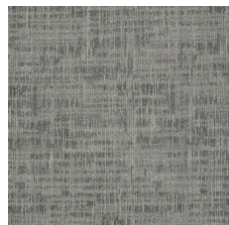
Swept 83322  
LRV 7.5 | L\* 32.81



Night 83496  
LRV 3 | L\* 20.1



Underground 83505  
LRV 3.7 | L\* 22.49



Zinc 83515  
LRV 13.8 | L\* 43.96



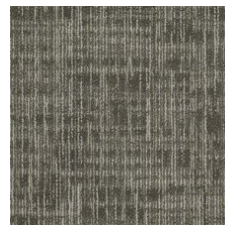
Carbon 83585  
LRV 5.8 | L\* 28.85



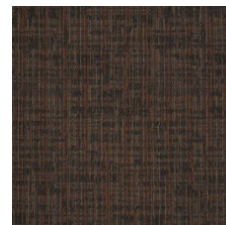
Canyon 83750  
LRV 4.7 | L\* 25.88



Suede 83755  
LRV 11.9 | L\* 41.05



Clay 83761  
LRV 10.3 | L\* 38.44



Brazen 83803  
LRV 3 | L\* 23.45

## Additional Information

\* To learn more about the recyclability of our products and our Environmental Guarantee, please visit [shawcontract.com/sustainability](https://shawcontract.com/sustainability).

\*\*Meets or exceeds all local and national regulations in country of manufacture. (Manufactured in an ISO 9001 & ISO 14001 certified facility or equivalent)

\*\*\*This carpet is manufactured to be ADA compliant, but to be fully ADA compliant, the end-user must ensure the carpet is adhered to the floor and installed as outlined in the ADA standards.

[Installation Guidelines](#)

[Maintenance Guidelines](#)

Specifications are subject to nominal manufacturing variance. Material supply and/or manufacturing processes may necessitate changes without notice.

This product is an exclusive design and may not be duplicated in any manner. Use of this design in the creation of another product design is also strictly prohibited.

Visit [shawcontract.com/testing](https://shawcontract.com/testing) for more information.



**PVC-Free**

Corporate Headquarters +1 800 257 7429 | +1 706 532 7984 | Atlanta +1 404 853 7429 | Bengaluru +91 80 6773 0202 | Beijing +86 10 6568 588 | Chicago +1 312 467 1331 | Dubai +971 4 584 6956 | Hong Kong +852 2623 0371 | London +44 207 961 4120 | Los Angeles +1 800 233 1614 | Melbourne +61 3 9939 8543 | Mexico City +55 5010 7600 | Mumbai +91 22 6284 5050 | Nantong +86 400 800 7429 | New York +1 212 953 7429 | Paris +33 (0) 1 81 22 44 39 | San Francisco +1 415 955 1920 | Shanghai +86 21 3338 4000 | Singapore +65 6733 1811 | Sydney +61 800 556 302

© 2025 Shaw Industries Group, Inc., a Berkshire Hathaway Company  
May 10, 2025

3 of 3