

Layer

Tipo De Producto	Alfombra EN Rollo	
Colección	Rewoven	
Número De Estilo	5A183	
Construcción	Patrón Multi Niveles Cortado/Buclé	
Fibra	Ecosolution Q® Nylon	
Método De Teñido	100% Solution Dyed	
Base Primaria	Sintético	
Base Secundaria	Ultraloc®	
Tratamientos	SSP® Shaw Protección Para El Piso	
Protectores		
Adhesivo	1000 Broadloom 4 Gallon or 3800 Indoor	
Recomendado	Outdoor Broadloom 4 Gallon	
	u.s.	metric
Tamaño Del Producto	12 ft	3.66 m
Gauge	1/10 in	39.4 per 10 cm
Puntadas	12.5 per in	49.0 per 10 cm
Espesor De La Fibra Terminada	0.118 in	3 mm
Densidad Media	6712 oz/yd ³	0.248 g/cm ³
Kilotex		11.39
Espesor Total	0.305 in	7.75 mm
Peso De La Fibra	22 oz/yd ²	745.9 g/m ²
Repetición Del Patrón De Instalación	14.4 in w x 36 in l	36.6 cm w x 91.44 cm l



Método De Instalación Recomendado

Direct Glue, Double Glue, Stretch-In

Datos + Pruebas

Prueba De Pastillas (Pill)	Pass
Panel Radiante (Astm E648)	Class I
Nbs Humo	Less Than 450
Propensión Electrostática	Less Than 3.5 kv
Cri Green Label Plus (Glp)	GLP2271
Ada Compliance	≥0.6, Cumple con las recomendaciones para el coeficiente de fricción estática para superficies transitables ADA y rutas accesibles***

Test Reports may be included or listed by the manufacturing/inventory style number as opposed to the noted selling style number.

Garantías

Vitalicio Limitado A USo Comercial

Productos Que Combinan

Carpet Tile: **Sculpt Tile, Sculpt Loop Tile**
Broadloom: **Dimension, Contour, Outline**

Atributos + Certificaciones

Health & Wellbeing	
Material Ingredient Transparency	Cradle to Cradle Certified® Nivel Plata (Versión 3.1) Health Product Declaration (HPD) Divulgado 1,000 ppm NSF 140 Oro
Indoor Air Quality	CRI Green Label Plus (GLP) GLP2271
Climate Impact	
Environmental Product Declaration (EPD)	Certificado Tercerizado De Acuerdo Con La Norma ISO14044, ISO14025 & EN15804
Embodied Carbon (Cradle to Gate)	11.6 (based upon 27.41 oz face weight) kg CO ₂ /m ²
Total Recycled Content	<1% (Pre-Consumer <1% Post-Consumer 0%)
Product Packaging	100% Recyclable
Global Product Assessment	CE Marking (EN 14041) Certificado Tercerizado Environmental Guarantee* Re[turn] Reclamation Program* Pickup & Delivery Available Country of Origin** Imported

Well V2 Contribution Credit

X08 Hazardous Material Reduction Part 1: Limit Hazardous Materials Optimization – 1 pt	C2C Nivel Plata (Versión 3.1)
X10 Volatile Compound Reduction Part 1 (A): Manage Volatile Organic Compounds (VOCs) Optimization – 1 pt	C2C Nivel Plata (Versión 3.1)
X11 Long Term Emissions Control Part 2: Flooring Optimization – 1 pt	Green Label Plus Certification GLP2271
X13 Enhanced Material Precaution Part 1: Select Optimized Materials Optimization – max 2 pts	C2C Nivel Plata (Versión 3.1)
X14 Material Transparency Part 1: Promote Ingredient Disclosure Optimization – max 2 pts	C2C Nivel Plata (Versión 3.1)

Contribución Para Créditos Leed

Crédito MR: Divulgación y optimización de productos de construcción Declaraciones ambientales de productos - Opción 1: Declaración ambiental de productos (EPD)	3rd Party Certified in Accordance with ISO14044, ISO14025 & EN15804
Crédito MR: Divulgación y optimización de productos de construcción Ingredientes de materiales - Opción 1: Informe de ingredientes de los materiales	C2C Nivel Plata (Versión 3.1)
Crédito MR: Divulgación y optimización de productos de construcción Ingredientes de materiales - Opción 2: Optimización de ingredientes de los materiales	C2C Nivel Plata (Versión 3.1)
Crédito EQ: Materiales de baja emisión Opción 1: Cálculos de categoría de producto	Certificación Green Label Plus: GLP2271

Available Colorways



Bisque 83111
LRV 17.8 | L* 49.26



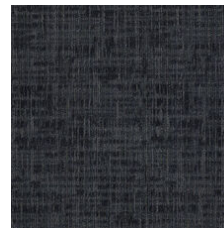
Cork 83170
LRV 18.8 | L* 50.46



Nuance 83314
LRV 7.1 | L* 31.94



Swept 83322
LRV 7.5 | L* 32.81



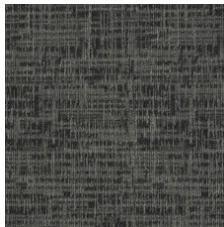
Night 83496
LRV 3 | L* 20.1



Underground 83505
LRV 3.7 | L* 22.49



Zinc 83515
LRV 13.8 | L* 43.96



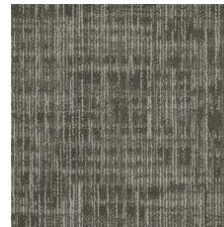
Carbon 83585
LRV 5.8 | L* 28.85



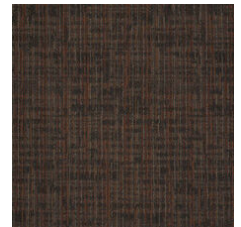
Canyon 83750
LRV 4.7 | L* 25.88



Suede 83755
LRV 11.9 | L* 41.05



Clay 83761
LRV 10.3 | L* 38.44



Brazen 83803
LRV 3 | L* 23.45

Información Adicional

* To learn more about the recyclability of our products and our Environmental Guarantee, please visit shawcontract.com/sustainability.

**Meets or exceeds all local and national regulations in country of manufacture. (Manufactured in an ISO 9001 & ISO 14001 certified facility or equivalent)

***This carpet is manufactured to be ADA compliant, but to be fully ADA compliant, the end-user must ensure the carpet is adhered to the floor and installed as outlined in the ADA standards.

[Installation Guidelines](#)

[Maintenance Guidelines](#)

Specifications are subject to nominal manufacturing variance. Material supply and/or manufacturing processes may necessitate changes without notice.

This product is an exclusive design and may not be duplicated in any manner. Use of this design in the creation of another product design is also strictly prohibited.

Visit shawcontract.com/testing for more information.



PVC-Free

Corporate Headquarters +1 800 257 7429 | +1 706 532 7984 | Atlanta +1 404 853 7429 | Bengaluru +91 80 6773 0202 | Beijing +86 10 6568 588 | Chicago +1 312 467 1331 | Dubai +971 4 584 6956 | Hong Kong +852 2623 0371 | London +44 207 961 4120 | Los Angeles +1 800 233 1614 | Melbourne +61 3 9939 8543 | Mexico City +55 5010 7600 | Mumbai +91 22 6284 5050 | Nantong +86 400 800 7429 | New York +1 212 953 7429 | Paris +33 (0) 1 81 22 44 39 | San Francisco +1 415 955 1920 | Shanghai +86 21 3338 4000 | Singapore +65 6733 1811 | Sydney +61 800 556 302

© 2025 Shaw Industries Group, Inc., a Berkshire Hathaway Company
July 2, 2025

3 of 3