

## Dimension

Producttype	<b>Kamerbreed</b>	
Collectie	<b>Rewoven</b>	
Stijlnummer	<b>5A184</b>	
Uitzicht	<b>Multi-Level Patroon/Cut Loop</b>	
Vezel	<b>Ecosolution Q® Nylon</b>	
Verfmethode	<b>100% In Oplossing Geverfd</b>	
Primaire Backing	<b>Synthetisch</b>	
Secundaire Backing	<b>Ultraloc®</b>	
Beschermende Behandelingen	<b>SSP® Shaw Grondbescherming</b>	
Aanbevolen Kleefstof	<b>H1000, H1200 or H3800</b>	
	u.s.	metric
Productformaat	<b>12 ft</b>	<b>3.66 m</b>
Meter	<b>1/10 in</b>	<b>39.4 per 10 cm</b>
Steken	<b>12.5 per in</b>	<b>50.5 per 10 cm</b>
Gemiddelde Dichtheid	<b>6046 oz/yd³</b>	<b>0.224 g/cm³</b>
Kilotex		<b>11.69</b>
Totale Dikte	<b>0.308 in</b>	<b>7.82 mm</b>
Getuft Gewicht	<b>22 oz/yd²</b>	<b>745.9 g/m²</b>
Installatiepatroon Herhalen	<b>14.4 in x 18 in</b>	<b>36.58 cm x 45.72 cm</b>



## Aanbevolen Installatiemethode

Direct Glue, Double Glue, Stretch-In

## Gegevens + Testen

Pooltest	<b>Pass</b>
Stralingspaneel (Astm E648)	<b>Class I</b>
Nbs-rook	<b>Less Than 450</b>
Elektrostatische Weerstand	<b>Less Than 3.5 kv</b>
Cri Groen Label Plus (Glp)	<b>GLP2271</b>
Ada Compliance	<b>&gt;0.6, Voldoet aan de aanbevolen statische wrijvingscoëfficiënt voor ADA-loopvlakken en toegankelijke routes***</b>

Test Reports may be included or listed by the manufacturing/inventory style number as opposed to the noted selling style number.

## Garanties

Levenslang Commercieel Beperkt

## Coördinerende Producten

Carpet Tile: **Trace Tile, Align Tile, Sculpt Tile, Sculpt Loop Tile**

Broadloom: **Layer, Contour, Outline**

## Kenmerken + Certificeringen

Cradle to Cradle gecertificeerd™

Environmental Product Declaration (EPD)

nsf 140

CRI Green Label Plus (GLP)

CE-markering (EN 14041)

milieugarantie

totaal gerecycleerde inhoud

productverpakking

land van herkomst

**Zilver Niveau (Versie 3.1)**

**3de Partij Gecertificeerd in Overeenstemming Met ISO14044, ISO14025 & EN15804**

**Goud**

**GLP2271**

**3de Partij Gecertificeerd**

**Re[turn] Reclamation Program\* | Pickup & Delivery Available**

**<1% (Pre-Consumer <1% | Post-Consumer 0%)**

**100% Recycleerbaar**

**Verenigde Staten**

## Groen Leed Bijdragekrediet

"MR-krediet: openbaarmaking en optimalisering van bouwproducten

Milieuproductverklaringen - Optie 1: Milieuproductverklaring (EPD)"

"MR-krediet: Openbaarmaking en optimalisering van bouwproducten

MateriaalIngrediënten - Optie 1: Rapportage materiaalIngrediënten"

"MR-krediet: openbaarmaking en optimalisering van bouwproducten

MateriaalIngrediënten - Optie 2: Optimalisering van materiaalIngrediënten"

"EQ-krediet: materialen met lage emissie Optie 1: Berekeningen per

productcategorie"

**3rd Party Certified in Accordance with ISO14044, ISO14025 & EN15804**

**C2C Silver Level (Version 3.1)**

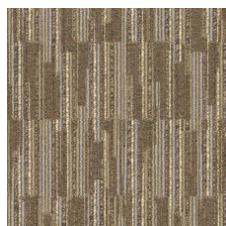
**C2C Silver Level (Version 3.1)**

**Green Label Plus Certification: GLP2271**

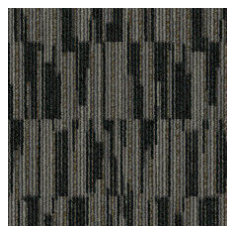
## Available Colorways



Bisque 83111



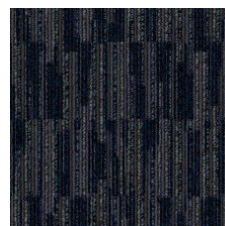
Cork 83170



Nuance 83314



Swept 83322



Night 83496



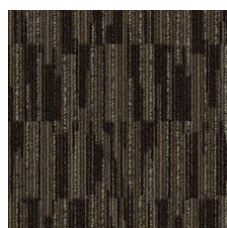
Underground 83505



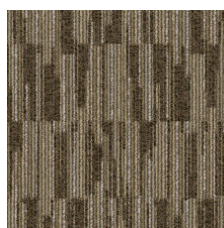
Zinc 83515



Carbon 83585



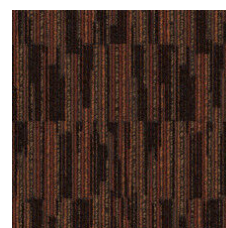
Canyon 83750



Suede 83755



Clay 83761



Brazen 83803

## Aanvullende Informatie

\* To learn more about the recyclability of our products and our Environmental Guarantee, please visit [shawcontract.com/sustainability](https://shawcontract.com/sustainability).

\*\*Meets or exceeds all local and national regulations in country of manufacture. (Manufactured in an ISO 9001 & ISO 14001 certified facility or equivalent)

\*\*\*This carpet is manufactured to be ADA compliant, but to be fully ADA compliant, the end-user must ensure the carpet is adhered to the floor and installed as outlined in the ADA standards.

[Installation Guidelines](#)

[Maintenance Guidelines](#)

Specifications are subject to nominal manufacturing variance. Material supply and/or manufacturing processes may necessitate changes without notice.

This product is an exclusive design and may not be duplicated in any manner. Use of this design in the creation of another product design is also strictly prohibited.

Visit [shawcontract.com/testing](https://shawcontract.com/testing) for more information.



**PVC-Free**

Corporate Headquarters +1 800 257 7429 | +1 706 532 7984 | **Atlanta** +1 404 853 7429 | **Bengaluru** +91 80 6773 0202 | **Beijing** +86 10 6568 588 | **Chicago** +1 312 467 1331 | **Dubai** +971 4 584 6956 | **Hong Kong** +852 2623 0371 | **Latin America (Miami)** +1 305 827 5912 | **London** +44 207 961 4120 | **Los Angeles** +1 800 233 1614 | **Melbourne** +61 3 9939 8543 | **Mexico City** +55 5010 7600 | **Mumbai** +91 22 6284 5050 | **Nantong** +86 400 800 7429 | **New York** +1 212 953 7429 | **Paris** +33 (0) 1 81 22 44 39 | **San Francisco** +1 415 955 1920 | **Santiago** +562 2431 5000 x 550 | **São Paulo** +55 11 3071 1702 | **Shanghai** +86 21 3338 4000 | **Singapore** +65 6733 1811 | **Sydney** +1 800 556 302