

Contour

상품 유형	Broadloom	
수집	Rewoven	
스타일 번호	5A186	
구성	패턴 루프식	
섬유	Ecosolution Q® 나일론	
염료 방법	100% 원착 염색	
기본 백업	합성	
보조 백업	Classicbac®	
보호 처리	SSP® Shaw 휴먼지 보호	
권장 접착제	1000 Broadloom 4 Gallon or 3800 Indoor Outdoor Broadloom 4 Gallon	
	u.s.	metric
제품 크기	12 ft	3.66 m
계량기	1/10 in	39.4 per 10 cm
스티치	10.0 per in	39.0 per 10 cm
완성 된 말뚝 두께	0.130 in	3.3 mm
평균 밀도	6646 oz/yd³	0.246 g/cm³
킬로 텍스		13.13
총 두께	0.269 in	6.83 mm
술을다는 무게	24 oz/yd²	813.7 g/m²
설치 패턴 반복	3.6 in w x 4.75 in l	9.14 cm w x 12.07 cm l



권장 설치 방법

Direct Glue, Double Glue, Stretch-In

데이터 + 테스트

알약 테스트	Pass
복사 패넬 (Astm E648)	Class I
Nbs 연기	Less Than 450
정전기 성향	Less Than 3.5 kv
Cri 그린 라벨 플러스 (Glp)	GLP8472
Ada 준수	0.6 이상, ADA 보행 노면과 이용 가능한 경로의 권장 마찰계수 충족***

Test Reports may be included or listed by the manufacturing/inventory style number as opposed to the noted selling style number.

보증

10년 상용 제한

코디네이팅 제품

Carpet Tile: **Sculpt Tile, Sculpt Loop Tile**
Broadloom: **Layer, Dimension, Outline**

속성 + 인증

Health & Wellbeing

Material Ingredient Transparency

Cradle to Cradle Certified® | Silver 레벨(버전 3.1)
Health Product Declaration (HPD) | 1,000ppm 노출
NSF 140 | 골드
CRI Green Label Plus (GLP) | GLP8472

Indoor Air Quality

Climate Impact

Environmental Product Declaration (EPD)
Embodied Carbon (Cradle to Gate)
Total Recycled Content
Product Packaging

ISO14044, ISO14025 및 EN15804에 따라 타사 인증 획득
12 kg CO₂/m²
<1% (Pre-Consumer <1% | Post-Consumer 0%)
100% 재활용 가능

Global Product Assessment

CE Marking (EN 14041) | 타사 인증 획득
Environmental Guarantee* | Re[turn] Reclamation Program* | Pickup & Delivery Available
Country of Origin | Imported**

Well V2 Contribution Credit

X08 Hazardous Material Reduction Part 1: Limit Hazardous Materials Optimization – 1 pt
X10 Volatile Compound Reduction Part 1 (A): Manage Volatile Organic Compounds (VOCs) Optimization – 1 pt
X11 Long Term Emissions Control Part 2: Flooring Optimization – 1 pt
X13 Enhanced Material Precaution Part 1: Select Optimized Materials Optimization – max 2 pts
X14 Material Transparency Part 1: Promote Ingredient Disclosure Optimization – max 2 pts

C2C 실버 레벨 (버전 3.1)
C2C 실버 레벨 (버전 3.1)
Green Label Plus Certificationglp8472
C2C 실버 레벨 (버전 3.1)
C2C 실버 레벨 (버전 3.1)

녹색의 공헌 기여 크레딧

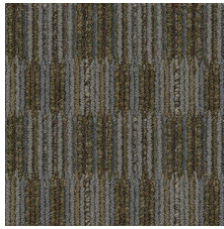
MR 크레딧 : 제품 공개 및 최적화 구축
환경 제품 선언-옵션 1 : 환경 제품 선언 (EPD)
MR 크레딧 : 제품 공개 및 최적화 구축
재료 성분-옵션 1 : 재료 성분보고
MR 크레딧 : 제품 공개 및 최적화 구축
재료 성분-옵션 2 : 재료 성분 최적화
EQ 크레딧 : 저 발광 재료
옵션 1 : 제품 범주 계산

3rd Party Certified in Accordance with ISO14044, ISO14025 & EN15804
C2C 실버 레벨 (버전 3.1)
C2C 실버 레벨 (버전 3.1)
Green Label Plus 인증: GLP8472

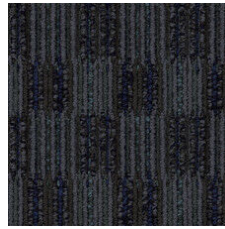
Available Colorways



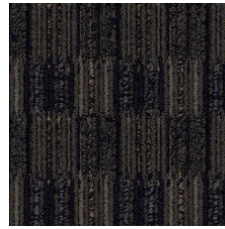
Bisque 86111



Swept 86322



Night 86496



Underground 86505



Zinc 86515



Carbon 86585



Canyon 86750



Suede 86755



Clay 86761

추가 정보

* To learn more about the recyclability of our products and our Environmental Guarantee, please visit shawcontract.com/sustainability.

**Meets or exceeds all local and national regulations in country of manufacture. (Manufactured in an ISO 9001 & ISO 14001 certified facility or equivalent)

***This carpet is manufactured to be ADA compliant, but to be fully ADA compliant, the end-user must ensure the carpet is adhered to the floor and installed as outlined in the ADA standards.

[Installation Guidelines](#)

[Maintenance Guidelines](#)

Specifications are subject to nominal manufacturing variance. Material supply and/or manufacturing processes may necessitate changes without notice.

This product is an exclusive design and may not be duplicated in any manner. Use of this design in the creation of another product design is also strictly prohibited.

Visit shawcontract.com/testing for more information.



PVC-Free

Corporate Headquarters +1 800 257 7429 | +1 706 532 7984 | Atlanta +1 404 853 7429 | Bengaluru +91 80 6773 0202 | Beijing +86 10 6568 588 | Chicago +1 312 467 1331 | Dubai +971 4 584 6956 | Hong Kong +852 2623 0371 | London +44 207 961 4120 | Los Angeles +1 800 233 1614 | Melbourne +61 3 9939 8543 | Mexico City +55 5010 7600 | Mumbai +91 22 6284 5050 | Nantong +86 400 800 7429 | New York +1 212 953 7429 | Paris +33 (0) 1 81 22 44 39 | San Francisco +1 415 955 1920 | Shanghai +86 21 3338 4000 | Singapore +65 6733 1811 | Sydney +61 800 556 302

© 2025 Shaw Industries Group, Inc., a Berkshire Hathaway Company
July 1, 2025

3 of 3