

Contour

Producttype	Kamerbreed
Collectie	Rewoven
Stijlnummer	5A186
Uitzicht	Patroonlus
Vezel	Ecosolution Q® Nylon
Verfmethode	100% In Oplossing Geverfd
Primaire Backing	Synthetisch
Secundaire Backing	Classicbac®
Beschermende Behandelingen	SSP® Shaw Grondbescherming
Aanbevolen Kleefstof	H1000, H1200 or H3800

	u.s.	metric
Productformaat	12 ft	3.66 m
Meter	1/10 in	39.4 per 10 cm
Steken	10.0 per in	39.0 per 10 cm
Gemiddelde Dichtheid	6646 oz/yd³	0.246 g/cm³
Kilotex		13.13
Totale Dikte	0.269 in	6.83 mm
Getuft Gewicht	24 oz/yd²	813.7 g/m²
Installatiepatroon	3.6 in x 4.75 in	9.14 cm x 12.07 cm
Herhalen		



Aanbevolen Installatiemethode

Direct Glue, Double Glue, Stretch-In

Gegevens + Testen

Pooltest	Pass
Stralingspaneel (Astm E648)	Class I
Nbs-rook	Less Than 450
Elektrostatische Weerstand	Less Than 3.5 kv
Cri Groen Label Plus (Glp)	GLP8472
Ada Compliance	>0.6, Voldoet aan de aanbevolen statische wrijvingscoëfficiënt voor ADA-loopvlakken en toegankelijke routes***

Test Reports may be included or listed by the manufacturing/inventory style number as opposed to the noted selling style number.

Garanties

10 Jaar Commercieel Beperkt

Coördinerende Producten

Carpet Tile: **Trace Tile, Align Tile, Sculpt Tile, Sculpt Loop Tile**

Broadloom: **Layer, Dimension, Outline**

Kenmerken + Certificeringen

Cradle to Cradle gecertificeerd™

Environmental Product Declaration (EPD)

nsf 140

CRI Green Label Plus (GLP)

CE-markering (EN 14041)

milieugarantie

totaal gerecycleerde inhoud

productverpakking

land van herkomst

Groen Leed Bijdragekrediet

"MR-krediet: openbaarmaking en optimalisering van bouwproducten

Milieuproductverklaringen - Optie 1: Milieuproductverklaring (EPD)"

"MR-krediet: Openbaarmaking en optimalisering van bouwproducten

Materiaalingrediënten - Optie 1: Rapportage materiaalingrediënten"

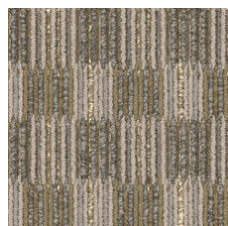
"MR-krediet: openbaarmaking en optimalisering van bouwproducten

Materiaalingrediënten - Optie 2: Optimalisering van materiaalingrediënten"

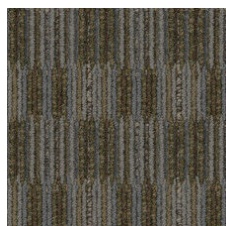
"EQ-krediet: materialen met lage emissie Optie 1: Berekeningen per

productcategorie"

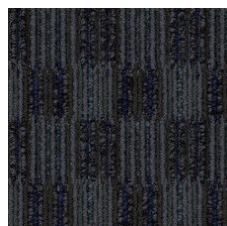
Available Colorways



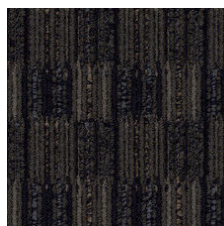
Bisque 86111



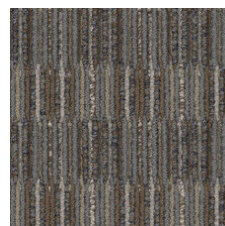
Swept 86322



Night 86496



Underground 86505



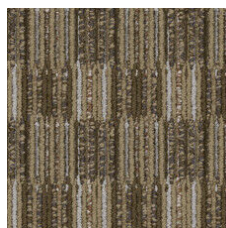
Zinc 86515



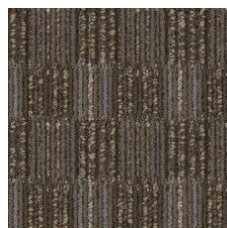
Carbon 86585



Canyon 86750



Suede 86755



Clay 86761

Zilver Niveau (Versie 3.1)

3de Partij Gecertificeerd in Overeenstemming Met ISO14044, ISO14025 & EN15804

Goud

GLP8472

3de Partij Gecertificeerd

Re[turn] Reclamation Program* | Pickup & Delivery Available

<1% (Pre-Consumer <1% | Post-Consumer 0%)

100% Recycleerbaar

Verenigde Staten

3rd Party Certified in Accordance with ISO14044, ISO14025 & EN15804

C2C Silver Level (Version 3.1)

C2C Silver Level (Version 3.1)

Green Label Plus Certification: GLP8472

Aanvullende Informatie

* To learn more about the recyclability of our products and our Environmental Guarantee, please visit shawcontract.com/sustainability.

**Meets or exceeds all local and national regulations in country of manufacture. (Manufactured in an ISO 9001 & ISO 14001 certified facility or equivalent)

***This carpet is manufactured to be ADA compliant, but to be fully ADA compliant, the end-user must ensure the carpet is adhered to the floor and installed as outlined in the ADA standards.

[Installation Guidelines](#)

[Maintenance Guidelines](#)

Specifications are subject to nominal manufacturing variance. Material supply and/or manufacturing processes may necessitate changes without notice.

This product is an exclusive design and may not be duplicated in any manner. Use of this design in the creation of another product design is also strictly prohibited.

Visit shawcontract.com/testing for more information.



PVC-Free

Corporate Headquarters +1 800 257 7429 | +1 706 532 7984 | **Atlanta** +1 404 853 7429 | **Bengaluru** +91 80 6773 0202 | **Beijing** +86 10 6568 588 | **Chicago** +1 312 467 1331 | **Dubai** +971 4 584 6956 | **Hong Kong** +852 2623 0371 | **Latin America (Miami)** +1 305 827 5912 | **London** +44 207 961 4120 | **Los Angeles** +1 800 233 1614 | **Melbourne** +61 3 9939 8543 | **Mexico City** +55 5010 7600 | **Mumbai** +91 22 6284 5050 | **Nantong** +86 400 800 7429 | **New York** +1 212 953 7429 | **Paris** +33 (0) 1 81 22 44 39 | **San Francisco** +1 415 955 1920 | **Santiago** +562 2431 5000 x 550 | **São Paulo** +55 11 3071 1702 | **Shanghai** +86 21 3338 4000 | **Singapore** +65 6733 1811 | **Sydney** +1 800 556 302