

Fossil

Type De Produit	Moquette EN Lé
Collection	Turn-Key
Numéro Du Style	5A038
Construction	Boucle Texturée
Fibre	Solution Q® Nylon
Méthode De Coloration	100% Solution Teinte
Sous-couche Primaire	Polypropylène
Sous-couche Secondaire	Classicbac®
Traitements Protecteurs	SSP® Shaw Protection Du Sol
Adhésif Recommandé	H1000, H1200 or H3800

	u.s.	metric
Dimensions Du Produit	12 ft	3.66 m
Jauge	1/8 in	31.5 per 10 cm
Points	6.5 per in	26.5 per 10 cm
Densité Moyenne	6042 oz/yd ³	0.224 g/cm ³
Kilotex		10.6
Epaisseur Du Velours	0.303 in	7.7 mm
Poids Tufté	24 oz/yd ²	813.7 g/m ²
Installation Répétition Du Motif	None	



Méthodes d'Installation Conseillées

Direct Glue, Double Glue, Stretch-In

Données + Tests Et Essai

Test d'Inflammabilité	Pass
Panneau Rayonnant (Astm E648)	Class I
Nbs Smoke	Less Than 450
Propension Électrostatique	Less Than 3.5 kv
Label Cri Green Label Plus (Glp)	GLP8472
Ada Compliance	>0.6, Meets the recommended static coefficient of friction for ADA walking surfaces and accessible routes***

Test Reports may be included or listed by the manufacturing/inventory style number as opposed to the noted selling style number.

Garanties

Limitée Commerciale De 10 Ans

Coordination Des Produits

Broadloom: **Terra, Text, Blog, Essential, Prime**

Attributs + Certifications

Certification Cradle to Cradle™ (C2C)

Déclaration environnementale de produit (EPD)

NSF 140

CRI Green Label Plus (GLP)

Label CE (EN 14041)

garantie environnementale

contenu recyclé total

emballage du produit

pays d'origine

Silver Level (Version 3.1)**Certifié Par Un Organisme Tiers Conformément Aux Normes
ISO 14044, ISO 14025 & EN15804**

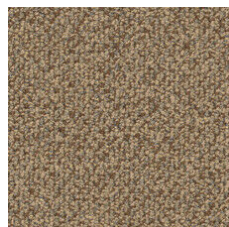
or

GLP8472**Certifié Par Un Organisme Tiers****Re[turn] Reclamation Program* | Pickup & Delivery Available****<1% (Pre-Consumer <1% | Post-Consumer 0%)****100% Recyclable****USA**

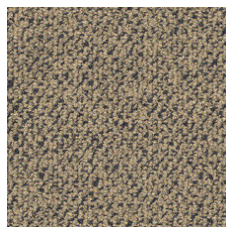
Contribution À La Certification Leed

MR Credit: Building Product Disclosure and Optimisation
Environmental Product Declarations - Option 1: Environmental Product
Declaration (EPD)MR Credit: Building Product Disclosure and Optimisation
Material Ingredients - Option 1: Material Ingredient ReportingMR Credit: Building Product Disclosure and Optimisation
Material Ingredients - Option 2: Material Ingredient Optimization"Crédit EQ : matériaux faibles émissions
Option 1 : calculs par catégorie de produit"**3rd Party Certified in Accordance with ISO14044, ISO14025 & EN15804****C2C Silver Level (Version 3.1)****C2C Silver Level (Version 3.1)****Certified**

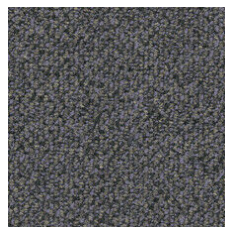
Available Colorways



Burl 38150



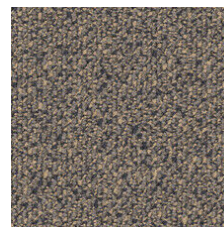
Willow 38315



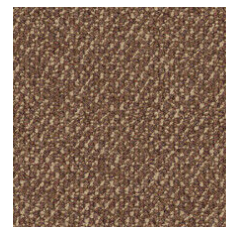
Alder 38485



Tupelo 38510



Tigerwood 38515



Sassafras 38855

Informations Supplémentaires

* To learn more about the recyclability of our products and our Environmental Guarantee, please visit shawcontract.com/sustainability.

**Meets or exceeds all local and national regulations in country of manufacture. (Manufactured in an ISO 9001 & ISO 14001 certified facility or equivalent)

***This carpet is manufactured to be ADA compliant, but to be fully ADA compliant, the end-user must ensure the carpet is adhered to the floor and installed as outlined in the ADA standards.

[Installation Guidelines](#)[Maintenance Guidelines](#)Specifications are subject to nominal manufacturing variance. Material supply
and/or manufacturing processes may necessitate changes without notice.This product is an exclusive design and may not be duplicated in any manner. Use of
this design in the creation of another product design is also strictly prohibited.Visit shawcontract.com/testing for more information.



PVC-Free