

Peto II

製品型	Broadloom
スタイルナンバー	5A025
建設	テクスチャードループ
ファイバ	エコソリューションQ®ナイロン
染色法	100% 原液着色
一次バッキング	合成
二次バッキング	Classicbac®
保護治療	SSP®shaw 土壌保護保証
推奨接着剤	1000 Broadloom 4 Gallon, Shaw 1200 or 3800 Indoor Outdoor Broadloom 4 Gallon

	u.s.	metric
商品のサイズ	12 ft	3.66 m
ゲージ	1/10 in	39.4 per 10 cm
ステッチ	9.0 per in	35.0 per 10 cm
完成した杭の厚さ	0.148 in	3.76 mm
平均密度	6324 oz/yd <sup>3</sup>	0.234 g/cm <sup>3</sup>
キロテックス		12.56
総厚	0.290 in	7.37 mm
房状の重量	26 oz/yd <sup>2</sup>	881.5 g/m <sup>2</sup>
インストールパターン リピート	None	None



推奨インストール方法

Direct Glue, Double Glue, Stretch-In

データ + テスト

錠剤テスト	Pass
放射パネル (astm E648)	Class I
Nbs煙	Less Than 450
静電気の傾向	Less Than 3.5 kv
Cri Green Label Plus (glp)	GLP8472
Adaコンプライアンス	>0.6、ADA 歩行面およびアクセス可能ルート用推奨静摩擦係数の基準に合致***

Test Reports may be included or listed by the manufacturing/inventory style number as opposed to the noted selling style number.

保証

10年間の商用限定保証

属性+認定

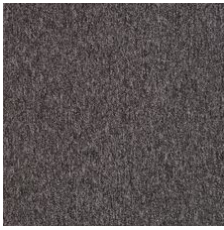
Health & Wellbeing	
Material Ingredient Transparency	Cradle to Cradle Certified®   シルバーレベル (バージョン 3.1) NSF 140   ゴールド
Indoor Air Quality	CRI Green Label Plus (GLP)   GLP8472
Climate Impact	
Environmental Product Declaration (EPD)	ISO 14044、ISO 14025 および EN15804 に基づく 第三者認証取得
Total Recycled Content	<1% (Pre-Consumer <1%   Post-Consumer 0%)
Product Packaging	100% リサイクル可能
Global Product Assessment	
	CE Marking (EN 14041)   第三者認証取得
	Environmental Guarantee*   Re[turn] Reclamation Program*   Pickup & Delivery Available
	Country of Origin**   Imported

グリーンリード貢献クレジット

MRクレジット：製品の開示と最適化の構築 環境製品宣言-オプション1：環境製品宣言 (EPD)	3rd Party Certified in Accordance with ISO14044, ISO14025 & EN15804
MRクレジット：製品の開示と最適化の構築 材料成分-オプション1：材料成分レポート	C2C Silver Level (Version 3.1)
MRクレジット：製品の開示と最適化の構築 材料成分-オプション2：材料成分の最適化	C2C Silver Level (Version 3.1)
EQクレジット：低排出材料 オプション1：製品カテゴリの計算	Green Label Plus Certification: GLP8472

Available Colorways

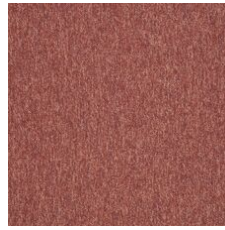
					
Coconut 71111	Beechwood 71150	Coastal Getaway 71321	Oak Alley 71330	Gecko 71335	Water Lily 71345
					
Sun & Moon 71350	Sing Blue Silver 71402	Bon Voyage 71440	Bluegrass Jazz 71455	Wisdom 71465	Moonstruck 71505



Slate 71525



Pure Titanium 71595  
LRV 10.2 | L\* 38.18



Schoolgirl 71615  
LRV 7.6 | L\* 33.04



Courtyard 71700



Coffee Break 71761



Rose Trellis 71830



Plum Martini 71965

## 追加情報

\* To learn more about the recyclability of our products and our Environmental Guarantee, please visit [shawcontract.com/sustainability](https://shawcontract.com/sustainability).

\*\*Meets or exceeds all local and national regulations in country of manufacture. (Manufactured in an ISO 9001 & ISO 14001 certified facility or equivalent)

\*\*\*This carpet is manufactured to be ADA compliant, but to be fully ADA compliant, the end-user must ensure the carpet is adhered to the floor and installed as outlined in the ADA standards.

[Installation Guidelines](#)

[Maintenance Guidelines](#)

Specifications are subject to nominal manufacturing variance. Material supply and/or manufacturing processes may necessitate changes without notice.

This product is an exclusive design and may not be duplicated in any manner. Use of this design in the creation of another product design is also strictly prohibited.

Visit [shawcontract.com/testing](https://shawcontract.com/testing) for more information.



**PVC-Free**

Corporate Headquarters +1 800 257 7429 | +1 706 532 7984 | Atlanta +1 404 853 7429 | Bengaluru +91 80 6773 0202 | Beijing +86 10 6568 588 | Chicago +1 312 467 1331 | Dubai +971 4 584 6956 | Hong Kong +852 2623 0371 | Latin America (Miami) +1 305 827 5912 | London +44 207 961 4120 | Los Angeles +1 800 233 1614 | Melbourne +61 3 9939 8543 | Mexico City +55 5010 7600 | Mumbai +91 22 6284 5050 | Nantong +86 400 800 7429 | New York +1 212 953 7429 | Paris +33 (0) 1 81 22 44 39 | San Francisco +1 415 955 1920 | Santiago +562 2431 5000 x 550 | São Paulo +55 11 3071 1702 | Shanghai +86 21 3338 4000 | Singapore +65 6733 1811 | Sydney +61 800 556 302