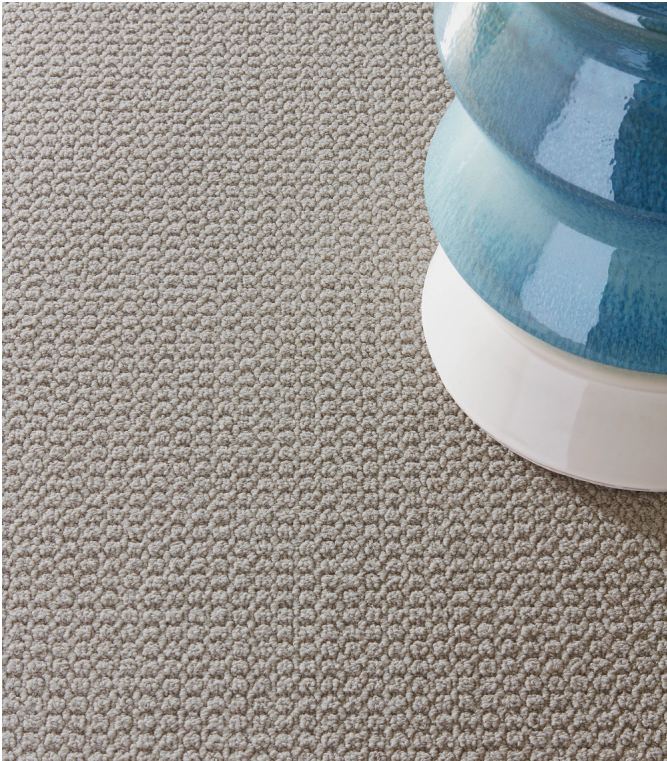


## Prosper Ultraloc® MB

Product Type	<b>Broadloom</b>	
Collection	<b>Living Environments</b>	
Style Number	<b>5A372</b>	
Construction	<b>Multi-Level Loop</b>	
Fiber	<b>Ecosolution Q® Nylon</b>	
Dye Method	<b>Solution Dyed</b>	
Primary Backing	<b>Synthetic</b>	
Secondary Backing	<b>Ultraloc® MB</b>	
Protective Treatments	<b>SSP® Shaw Soil Protection</b>	
Approved Spaces	<b>Units Only</b>	
Recommended Adhesive	<b>1000 Broadloom 4 Gallon or 3800 Indoor Outdoor Broadloom 4 Gallon</b>	
	u.s.	metric
Product Size	<b>12 ft</b>	<b>3.66 m</b>
Gauge	<b>1/10 in</b>	<b>39.4 per 10 cm</b>
Stitches	<b>10.5 per in</b>	<b>42.5 per 10 cm</b>
Finished Pile Thickness	<b>0.201 in</b>	<b>5.11 mm</b>
Average Density	<b>5015 oz/yd³</b>	<b>0.186 g/cm³</b>
Total Thickness	<b>0.334 in</b>	<b>8.48 mm</b>
Tufted Weight	<b>28 oz/yd²</b>	<b>949.4 g/m²</b>
Installation Pattern Repeat	<b>0.19 in x 0.53 in</b>	<b>0.4826 cm x 1.3462 cm</b>



### Recommended Installation Method

Direct Glue, Double Glue, Stretch-In

Product should be installed in residents rooms only applications. No more than two drops in width, and room lengths no greater than 25 feet is required.

When installing all carpeting, Stretch-In over pad is recommended. For hybrid locations with carpet and resilient, direct glue with LokSeam is recommended.

### Performance + Testing

Pill Test	<b>Pass</b>
Radiant Panel	<b>Class I</b>
NBS Smoke	<b>Less Than 450</b>
Electrostatic Propensity	<b>Less Than 3.5 kv</b>
CRI Green Label Plus (GLP)	<b>GLP2271</b>
ADA Compliance	<b>&gt;0.6, meets the recommended static coefficient of friction for ADA walking surfaces and accessible routes***</b>

Test Reports may be included or listed by the manufacturing/inventory style number as opposed to the noted selling style number.

### Warranties

[Commercial Limited Warranty for Housing](#)

Coordinating Products

COREtec: **Repose**

Broadloom: **Scenery, Reimagine, Statement, Niche, Prepare, Noted, Remedy I, Remedy II, Personable, Prominent, Endeavor, Cocoon, Prolific Solid, Prolific Berber, Enhance Tonal, Enhance Solid, Esteem Ultraloc® MB, Remain 45 Oz., Remain 55 Oz., Upscale, Imagery, Sentiment**

Material Health & Environmental Certifications

Health & Wellbeing

Material Ingredient Transparency	<b>Cradle to Cradle Certified®   Silver Level (Version 3.1)</b> <b>Health Product Declaration (HPD)   1,000 ppm Disclosure</b> <b>NSF 140   Gold</b>
Indoor Air Quality	<b>CRI Green Label Plus (GLP)   GLP2271</b>

Climate Impact

Environmental Product Declaration (EPD)	<b>3rd Party Certified in Accordance with ISO14044, ISO14025 &amp; EN15804</b>
Embodied Carbon (Cradle to Gate)	<b>11.6 kg CO<sub>2</sub>/m<sup>2</sup></b>
Total Recycled Content	<b>&lt;1% (Pre-Consumer &lt;1%   Post-Consumer 0%)</b>
Product Packaging	<b>100% Recyclable</b>

Global Product Assessment

	<b>CE Marking (EN 14041)   3rd Party Certified</b>
	<b>Environmental Guarantee*   Re[turn] Reclamation Program*   Pickup &amp; Delivery Available</b>
	<b>Country of Origin**   USA</b>

WELL V2 Contribution Credit

X08 Hazardous Material Reduction Part 1: Limit Hazardous Materials Optimization	<b>C2C Silver Level (Version 3.1)</b>
X10 Volatile Compound Reduction Part 1 (A): Manage Volatile Organic Compounds (VOCs) Optimization	<b>C2C Silver Level (Version 3.1)</b>
X11 Long Term Emissions Control Part 2: Flooring Optimization	<b>Green Label Plus Certification GLP2271</b>
X13 Enhanced Material Precaution Part 1: Select Optimized Materials Optimization	<b>C2C Silver Level (Version 3.1)</b>
X14 Material Transparency Part 1: Promote Ingredient Disclosure Optimization	<b>C2C Silver Level (Version 3.1)</b>

Leed v4 Contribution Credits

MR Credit: Building Product Disclosure and Optimization Environmental Product Declarations - Option 1: Environmental Product Declaration (EPD)	<b>3rd Party Certified in Accordance with ISO14044, ISO14025 &amp; EN15804</b>
MR Credit: Building Product Disclosure and Optimization Material Ingredients - Option 1: Material Ingredient Reporting	<b>C2C Silver Level (Version 3.1)</b>
MR Credit: Building Product Disclosure and Optimization Material Ingredients - Option 2: Material Ingredient Optimization	<b>C2C Silver Level (Version 3.1)</b>
EQ Credit: Low Emitting Materials Option 1: Product Category Calculations	<b>Green Label Plus Certification: GLP2271</b>

## Available Colorways



Flourish 26110



Uplift 26112



Elevate 26150



Surpass 26151



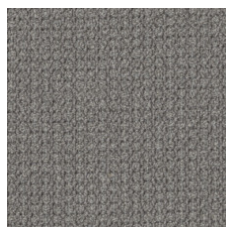
Grow 26251



Appreciate 26506



Enrich 26515



Thrive 26518

## Additional Information

\* To learn more about the recyclability of our products and our Environmental Guarantee, please visit [shawcontract.com/sustainability](https://shawcontract.com/sustainability).

\*\*Meets or exceeds all local and national regulations in country of manufacture. (Manufactured in an ISO 9001 & ISO 14001 certified facility or equivalent)

\*\*\*This carpet is manufactured to be ADA compliant, but to be fully ADA compliant, the end-user must ensure the carpet is adhered to the floor and installed as outlined in the ADA standards.

[Installation Guidelines](#)

[Maintenance Guidelines](#)

Specifications are subject to nominal manufacturing variance. Material supply and/or manufacturing processes may necessitate changes without notice.

This product is an exclusive design and may not be duplicated in any manner. Use of this design in the creation of another product design is also strictly prohibited.

Visit [shawcontract.com/testing](https://shawcontract.com/testing) for more information.



**PVC-Free**

Corporate Headquarters +1 800 257 7429 | +1 706 532 7984 | Atlanta +1 404 853 7429 | Bengaluru +91 80 6773 0202 | Beijing +86 10 6568 588 | Chicago +1 312 467 1331 | Dubai +971 4 584 6956 | Hong Kong +852 2623 0371 | London +44 207 961 4120 | Los Angeles +1 800 233 1614 | Melbourne +61 3 9939 8543 | Mexico City +55 5010 7600 | Mumbai +91 22 6284 5050 | Nantong +86 400 800 7429 | New York +1 212 953 7429 | Paris +33 (0) 1 81 22 44 39 | San Francisco +1 415 955 1920 | Shanghai +86 21 3338 4000 | Singapore +65 6733 1811 | Sydney +61 800 556 302

© 2025 Shaw Industries Group, Inc., a Berkshire Hathaway Company  
May 23, 2025

3 of 3