

Valle Broadloom

Tipo De Producto	Alfombra EN Rollo	
Colección	Cultura	
Número De Estilo	5A382	
Construcción	Patrón Multi Niveles Cortado/Buclé	
Fibra	Ecosolution Q® Nylon	
Método De Teñido	100% Solution Dyed	
Base Primaria	Sintético	
Base Secundaria	Ultraloc®	
Tratamientos Protectores	SSP® Shaw Protección Para El Piso	
Adhesivo Recomendado	1000 Broadloom 4 Gallon or 3800 Indoor Outdoor Broadloom 4 Gallon	
	u.s.	metric
Tamaño Del Producto	12 ft	3.66 m
Gauge	1/10 in	39.4 per 10 cm
Puntadas	10.0 per in	39.0 per 10 cm
Espesor De La Fibra Terminada	0.185 in	4.7 mm
Densidad Media	6227 oz/yd³	0.23 g/cm³
Espesor Total	0.378 in	9.6 mm
Peso De La Fibra	32 oz/yd²	1085 g/m²
Repetición Del Patrón De Instalación	72 in x 108 in	182.9 cm x 274.3 cm



Método De Instalación Recomendado

Direct Glue, Double Glue, Stretch-In

Datos + Pruebas

Panel Radiante (Astm E648)	Class I
Nbs Humo	Less Than 450
Propensión Electrostática	Less Than 3.5 kv
Cri Green Label Plus (Glp)	GLP2271
Ada Compliance	≥0.6, Cumple con las recomendaciones para el coeficiente de fricción estática para superficies transitables ADA y rutas accesibles***
Test Reports may be included or listed by the manufacturing/inventory style number as opposed to the noted selling style number.	

Garantías

Vitalicio Limitado A USo Comercial

Productos Que Combinan

LVT: **In Unison 5.0, Crossing Paths 5.0, In Unison 2.5, Crossing Paths 2.5**  
Carpet Tile: **Alban Tile, Hand Woven Tile, Local Tile, Sierra Tile, Casa Tile, Cross Weave Tile**  
Broadloom: **Braided Broadloom**

Atributos + Certificaciones

Health & Wellbeing

Material Ingredient Transparency

Cradle to Cradle Certified® | Nivel Plata (Versión 3.1)  
Health Product Declaration (HPD) | Divulgado 1,000 ppm  
NSF 140 | Oro

Indoor Air Quality

CRI Green Label Plus (GLP) | GLP2271

Climate Impact

Environmental Product Declaration (EPD)

Certificado Tercerizado De Acuerdo Con La Norma ISO14044,  
ISO14025 & EN15804

Total Recycled Content

<1% (Pre-Consumer <1% | Post-Consumer 0%)

Product Packaging

100% Recyclable

Global Product Assessment

CE Marking (EN 14041) | Certificado Tercerizado  
Environmental Guarantee\* | Re[turn] Reclamation Program\* | Pickup &  
Delivery Available  
Country of Origin\*\* | Imported

Well V2 Contribution Credit

X08 Hazardous Material Reduction Part 1: Limit Hazardous Materials  
Optimization – 1 pt

C2C Nivel Plata (Versión 3.1)

X10 Volatile Compound Reduction Part 1 (A): Manage Volatile Organic  
Compounds (VOCs) Optimization – 1 pt

C2C Nivel Plata (Versión 3.1)

X11 Long Term Emissions Control Part 2: Flooring Optimization – 1 pt

Green Label Plus Certification GLP2271

X13 Enhanced Material Precaution Part 1: Select Optimized Materials  
Optimization – max 2 pts

C2C Nivel Plata (Versión 3.1)

X14 Material Transparency Part 1: Promote Ingredient Disclosure  
Optimization – max 2 pts

C2C Nivel Plata (Versión 3.1)

Contribución Para Créditos Leed

Crédito MR: Divulgación y optimización de productos de construcción  
Declaraciones ambientales de productos - Opción 1: Declaración ambiental  
de productos (EPD)

3rd Party Certified in Accordance with ISO14044, ISO14025 & EN15804

Crédito MR: Divulgación y optimización de productos de construcción  
Ingredientes de materiales - Opción 1: Informe de ingredientes de los  
materiales

C2C Nivel Plata (Versión 3.1)

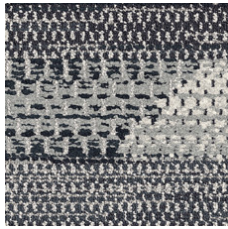
Crédito MR: Divulgación y optimización de productos de construcción  
Ingredientes de materiales - Opción 2: Optimización de ingredientes de los  
materiales

C2C Nivel Plata (Versión 3.1)

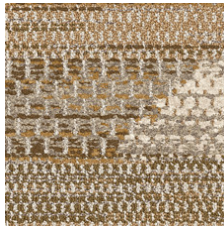
Crédito EQ: Materiales de baja emisión  
Opción 1: Cálculos de categoría de producto

Certificación Green Label Plus: GLP2271

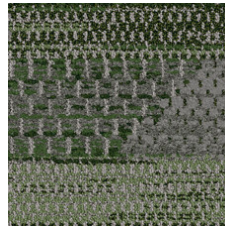
## Available Colorways



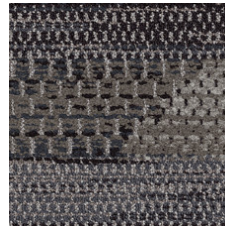
Cobblestone 81100



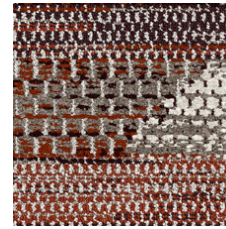
Vibrant Maiz 81210



Vibrant Agave 81375



Tejate 81518



Vibrant Native 81865

## Información Adicional

\* To learn more about the recyclability of our products and our Environmental Guarantee, please visit [shawcontract.com/sustainability](https://shawcontract.com/sustainability).

\*\*Meets or exceeds all local and national regulations in country of manufacture. (Manufactured in an ISO 9001 & ISO 14001 certified facility or equivalent)

\*\*\*This carpet is manufactured to be ADA compliant, but to be fully ADA compliant, the end-user must ensure the carpet is adhered to the floor and installed as outlined in the ADA standards.

[Installation Guidelines](#)

[Maintenance Guidelines](#)

Specifications are subject to nominal manufacturing variance. Material supply and/or manufacturing processes may necessitate changes without notice.

This product is an exclusive design and may not be duplicated in any manner. Use of this design in the creation of another product design is also strictly prohibited.

Visit [shawcontract.com/testing](https://shawcontract.com/testing) for more information.



**PVC-Free**

Corporate Headquarters +1 800 257 7429 | +1 706 532 7984 | Atlanta +1 404 853 7429 | Bengaluru +91 80 6773 0202 | Beijing +86 10 6568 588 | Chicago +1 312 467 1331 | Dubai +971 4 584 6956 | Hong Kong +852 2623 0371 | London +44 207 961 4120 | Los Angeles +1 800 233 1614 | Melbourne +61 3 9939 8543 | Mexico City +55 5010 7600 | Mumbai +91 22 6284 5050 | Nantong +86 400 800 7429 | New York +1 212 953 7429 | Paris +33 (0) 1 81 22 44 39 | San Francisco +1 415 955 1920 | Shanghai +86 21 3338 4000 | Singapore +65 6733 1811 | Sydney +61 800 556 302

© 2025 Shaw Industries Group, Inc., a Berkshire Hathaway Company  
April 18, 2025

3 of 3