

Summit

製品型	Broadloom
コレクション	Places
スタイルナンバー	5A233
建設	マルチレベルパターンループ
ファイバ	エコソリューションQ®ナイロン
染色法	100% 原液着色
一次バックキング	合成
二次バックキング	Classicbac®
保護治療	SSP®shaw 土壌保護保証
推奨接着剤	H1000, H1200 or H3800

	u.s.	metric
商品のサイズ	12 ft	3.66 m
ゲージ	1/12 in	47.2 per 10 cm
ステッチ	9.5 per in	38.5 per 10 cm
平均密度	6712 oz/yd³	0.248 g/cm³
キロテックス		12.24
総厚	0.278 in	7.06 mm
房状の重量	22 oz/yd²	745.9 g/m²
インストールパターン リピート	24 in x 24 in	61 cm x 61 cm



推奨インストール方法

Direct Glue, Double Glue, Stretch-In

データ + テスト

錠剤テスト	Pass
放射パネル (astm E648)	Class I
Nbs煙	Less Than 450
静電気の傾向	Less Than 3.5 kv
Cri Green Label Plus (glp)	GLP8472

Adaコンプライアンス >0.6、ADA 歩行面およびアクセス可能ルート用推奨静摩擦係数の基準に合致***

Test Reports may be included or listed by the manufacturing/inventory style number as opposed to the noted selling style number.

保証

10年間の商用限定保証

コーディネート商品

Carpet Tile: **Sea Tile, Sea Edge Tile, Sky Tile, City Central Tile, Central Line Tile**

Broadloom: **Grove, Birch**

属性+認定

Health & Wellbeing

Material Ingredient Transparency

Cradle to Cradle Certified® | シルバーレベル (バージョン 3.1)
NSF 140 | ゴールド

Indoor Air Quality

CRI Green Label Plus (GLP) | GLP8472

Climate Impact

Environmental Product Declaration (EPD)

ISO 14044、ISO 14025 および EN15804 に基づく 第三者認証取得

Total Recycled Content

<1% (Pre-Consumer <1% | Post-Consumer 0%)

Product Packaging

100% リサイクル可能

Global Product Assessment

CE Marking (EN 14041) | 第三者認証取得

Environmental Guarantee* | Re[turn] Reclamation Program* | Pickup & Delivery Available

Country of Origin** | Imported

グリーンリード貢献クレジット

MRクレジット：製品の開示と最適化の構築
環境製品宣言-オプション1：環境製品宣言 (EPD)

3rd Party Certified in Accordance with ISO 14044, ISO 14025 & EN15804

MRクレジット：製品の開示と最適化の構築
材料成分-オプション1：材料成分レポート

C2C Silver Level (Version 3.1)

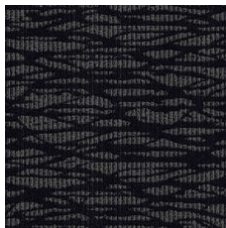
MRクレジット：製品の開示と最適化の構築
材料成分-オプション2：材料成分の最適化

C2C Silver Level (Version 3.1)

EQクレジット：低排出材料
オプション1：製品カテゴリの計算

Green Label Plus Certification: GLP8472

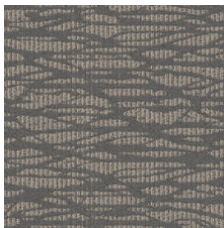
Available Colorways



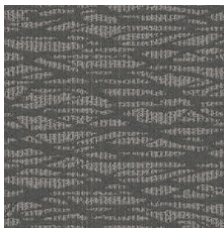
Skyline 72500



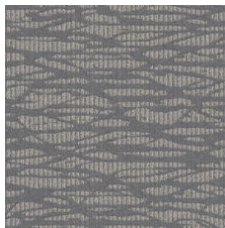
Market 72505



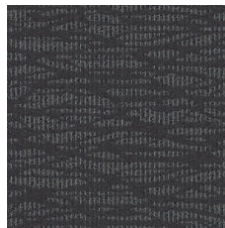
Scenic 72515



Metro 72530



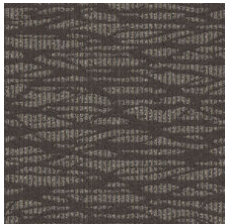
Ocean 72535



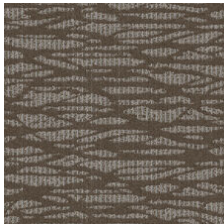
Urban 72557



Island 72595



Village 72760



Earthy 72761

追加情報

* To learn more about the recyclability of our products and our Environmental Guarantee, please visit shawcontract.com/sustainability.

**Meets or exceeds all local and national regulations in country of manufacture. (Manufactured in an ISO 9001 & ISO 14001 certified facility or equivalent)

***This carpet is manufactured to be ADA compliant, but to be fully ADA compliant, the end-user must ensure the carpet is adhered to the floor and installed as outlined in the ADA standards.

[Installation Guidelines](#)

[Maintenance Guidelines](#)

Specifications are subject to nominal manufacturing variance. Material supply and/or manufacturing processes may necessitate changes without notice.

This product is an exclusive design and may not be duplicated in any manner. Use of this design in the creation of another product design is also strictly prohibited.

Visit shawcontract.com/testing for more information.



PVC-Free

Corporate Headquarters +1 800 257 7429 | +1 706 532 7984 | Atlanta +1 404 853 7429 | Bengaluru +91 80 6773 0202 | Beijing +86 10 6568 588 | Chicago +1 312 467 1331 | Dubai +971 4 584 6956 | Hong Kong +852 2623 0371 | Latin America (Miami) +1 305 827 5912 | London +44 207 961 4120 | Los Angeles +1 800 233 1614 | Melbourne +61 3 9939 8543 | Mexico City +55 5010 7600 | Mumbai +91 22 6284 5050 | Nantong +86 400 800 7429 | New York +1 212 953 7429 | Paris +33 (0) 1 81 22 44 39 | San Francisco +1 415 955 1920 | Santiago +562 2431 5000 x 550 | São Paulo +55 11 3071 1702 | Shanghai +86 21 3338 4000 | Singapore +65 6733 1811 | Sydney +1 800 556 302