

Hana

Product Type	Broadloom	
Collection	Terasu	
Style Number	5A237	
Construction	Multi-Level Pattern/Cut Loop	
Fiber	Ecosolution Q® Nylon	
Dye Method	100% Solution Dyed	
Primary Backing	Synthetic	
Secondary Backing	Ultraloc®	
Protective Treatments	SSP® Shaw Soil Protection	
Recommended Adhesive	1000 Broadloom 4 Gallon, Shaw 1200 or 3800 Indoor Outdoor Broadloom 4 Gallon	
	u.s.	metric
Product Size	12 ft	3.66 m
Gauge	1/12 in	47.2 per 10 cm
Stitches	11.5 per in	46.5 per 10 cm
Finished Pile Thickness	0.126 in	3.2 mm
Average Density	7429 oz/yd³	0.275 g/cm³
Kilotex		13.14
Total Thickness	0.278 in	7.06 mm
Tufted Weight	26 oz/yd²	881.5 g/m²
Installation Pattern Repeat	72 in x 68 in	1.83 m x 1.73 m



Recommended Installation Method

Direct Glue, Double Glue, Stretch-In

Data + Testing

Pill Test	Pass
Radiant Panel	Class I
Nbs Smoke	Less Than 450
Electrostatic Propensity	Less Than 3.5 kv
Cri Green Label Plus (Glp)	GLP2271
Ada Compliance	>0.6, Meets the recommended static coefficient of friction for ADA walking surfaces and accessible routes***

Test Reports may be included or listed by the manufacturing/inventory style number as opposed to the noted selling style number.

Warranties

Lifetime Commercial Limited

Coordinating Products

Sheet: **Tatami Sheet, Reed Sheet, Roji Sheet**
Carpet Tile: **Botan Tile, Hana Tile, Kusa Tile**
Broadloom: **Botan, Kusa**

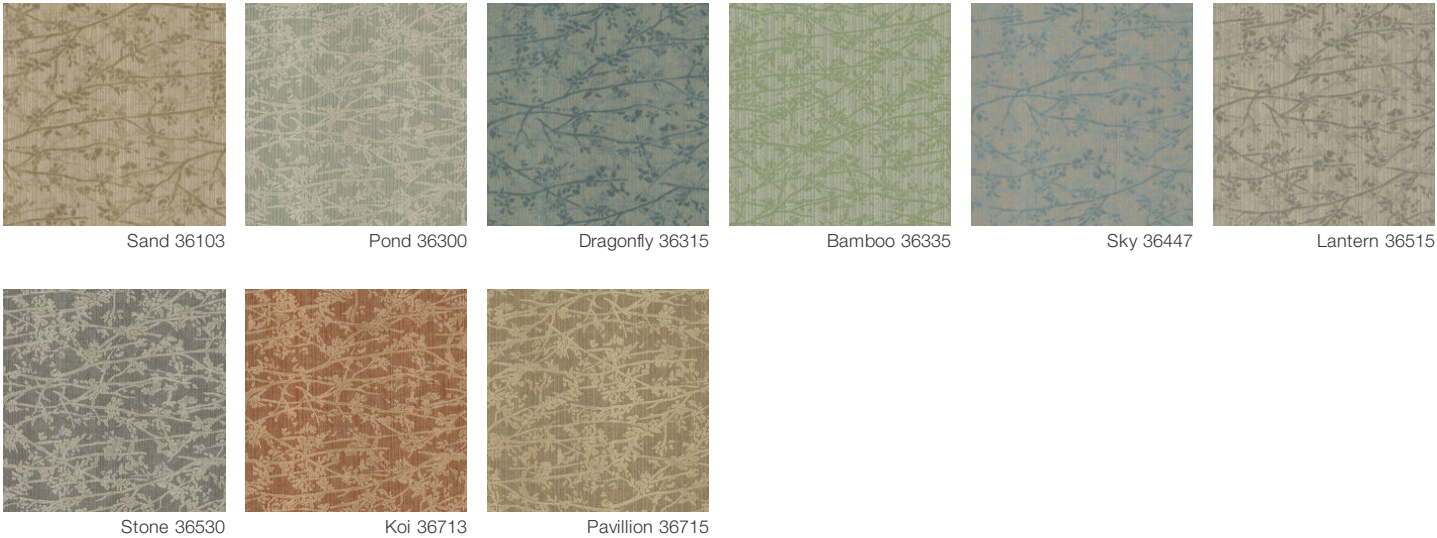
Material Health & Environmental Certifications

Health & Wellbeing	
Material Ingredient Transparency	Cradle to Cradle Certified® Silver Level (Version 3.1) NSF 140 Gold
Indoor Air Quality	CRI Green Label Plus (GLP) GLP2271
Climate Impact	
Environmental Product Declaration (EPD)	3rd Party Certified in Accordance with ISO14044, ISO14025 & EN15804
Total Recycled Content	<1% (Pre-Consumer <1% Post-Consumer 0%)
Product Packaging	100% Recyclable
Global Product Assessment	CE Marking (EN 14041) 3rd Party Certified Environmental Guarantee* Re[turn] Reclamation Program* Pickup & Delivery Available Country of Origin** USA

Green Leed Contribution Credit

MR Credit: Building Product Disclosure and Optimization Environmental Product Declarations - Option 1: Environmental Product Declaration (EPD)	3rd Party Certified in Accordance with ISO14044, ISO14025 & EN15804
MR Credit: Building Product Disclosure and Optimization Material Ingredients - Option 1: Material Ingredient Reporting	C2C Silver Level (Version 3.1)
MR Credit: Building Product Disclosure and Optimization Material Ingredients - Option 2: Material Ingredient Optimization	C2C Silver Level (Version 3.1)
EQ Credit: Low Emitting Materials Option 1: Product Category Calculations	Green Label Plus Certification: GLP2271

Available Colorways



Additional Information

* To learn more about the recyclability of our products and our Environmental Guarantee, please visit shawcontract.com/sustainability.

**Meets or exceeds all local and national regulations in country of manufacture. (Manufactured in an ISO 9001 & ISO 14001 certified facility or equivalent)

***This carpet is manufactured to be ADA compliant, but to be fully ADA compliant, the end-user must ensure the carpet is adhered to the floor and installed as outlined in the ADA standards.

[Installation Guidelines](#)

Maintenance Guidelines

Specifications are subject to nominal manufacturing variance. Material supply and/or manufacturing processes may necessitate changes without notice.

This product is an exclusive design and may not be duplicated in any manner. Use of this design in the creation of another product design is also strictly prohibited.

Visit shawcontract.com/testing for more information.

