

Botan

상품 유형	Broadloom
수집	Terasu
스타일 번호	5A236
구성	다중 레벨 패턴/커트루프식
섬유	Ecosolution Q® 나일론
염료 방법	100% 원착 염색
기본 백업	합성
보조 백업	Ultraloc®
보호 처리	SSP® Shaw 휴먼지 보호
권장 접착제	H1000, H1200 or H3800

	U.S.	metric
제품 크기	12 ft	3.66 m
계량기	1/12 in	47.2 per 10 cm
스티치	11.5 per in	46.5 per 10 cm
평균 밀도	7429 oz/yd ³	0.275 g/cm ³
킬로 텍스		13.14
총 두께	0.278 in	7.06 mm
슬을다는 무게	26 oz/yd ²	881.5 g/m ²
설치 패턴 반복	72 in x 50 in	1.83 m x 1.27 m



권장 설치 방법

Direct Glue, Double Glue, Stretch-In

데이터 + 테스트

알약 테스트	Pass
복사 패널 (Astm E648)	Class I
Nbs 연기	Less Than 450
정전기 성향	Less Than 3.5 kv
Cri 그린 라벨 플러스 (Glp)	GLP2271
Ada 준수	0.6 이상, ADA 보행 노면과 이용 가능한 경로의 권장 마찰계수 충족***

Test Reports may be included or listed by the manufacturing/inventory style number as opposed to the noted selling style number.

보증

종신 상용 제한

코디네이팅 제품

Sheet: **Tatami Sheet, Reed Sheet, Roji Sheet**
Carpet Tile: **Botan Tile, Hana Tile, Kusa Tile**
Broadloom: **Hana, Kusa**

속성 + 인증

Health & Wellbeing

Material Ingredient Transparency

Cradle to Cradle Certified® | Silver 레벨(버전 3.1)
NSF 140 | 골드

Indoor Air Quality

CRI Green Label Plus (GLP) | GLP2271

Climate Impact

Environmental Product Declaration (EPD)

ISO 14044, ISO 14025 및 EN15804에 따라 타사 인증 획득

Total Recycled Content

<1% (Pre-Consumer <1% | Post-Consumer 0%)

Product Packaging

100% 재활용 가능

Global Product Assessment

CE Marking (EN 14041) | 타사 인증 획득

Environmental Guarantee* | Re[turn] Reclamation Program* | Pickup & Delivery Available

Country of Origin** | Imported

녹색의 공헌 기여 크레딧

MR 크레딧 : 제품 공개 및 최적화 구축
환경 제품 선언-옵션 1 : 환경 제품 선언 (EPD)

3rd Party Certified in Accordance with ISO14044, ISO14025 & EN15804

MR 크레딧 : 제품 공개 및 최적화 구축
재료 성분-옵션 1 : 재료 성분보고

C2C Silver Level (Version 3.1)

MR 크레딧 : 제품 공개 및 최적화 구축
재료 성분-옵션 2 : 재료 성분 최적화

C2C Silver Level (Version 3.1)

EQ 크레딧 : 저 발광 재료
옵션 1 : 제품 범주 계산

Green Label Plus Certification: GLP2271

Available Colorways



Sand 36103



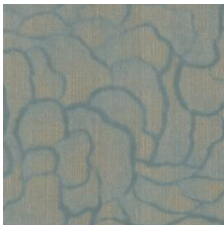
Pond 36300



Dragonfly 36315



Bamboo 36335



Sky 36447



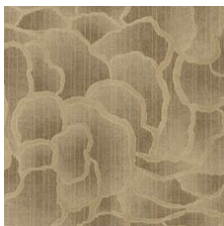
Lantern 36515



Stone 36530



Koi 36713



Pavillion 36715

추가 정보

* To learn more about the recyclability of our products and our Environmental Guarantee, please visit shawcontract.com/sustainability.

**Meets or exceeds all local and national regulations in country of manufacture. (Manufactured in an ISO 9001 & ISO 14001 certified facility or equivalent)

***This carpet is manufactured to be ADA compliant, but to be fully ADA compliant, the end-user must ensure the carpet is adhered to the floor and installed as outlined in the ADA standards.

[Installation Guidelines](#)

[Maintenance Guidelines](#)

Specifications are subject to nominal manufacturing variance. Material supply and/or manufacturing processes may necessitate changes without notice.

This product is an exclusive design and may not be duplicated in any manner. Use of this design in the creation of another product design is also strictly prohibited.

Visit shawcontract.com/testing for more information.

