

## Kusa

상품 유형	<b>Broadloom</b>	
수집	<b>Terasu</b>	
스타일 번호	<b>5A238</b>	
구성	<b>다중 레벨 패턴/커트루프식</b>	
섬유	<b>Ecosolution Q® 나일론</b>	
염료 방법	<b>100% 원착 염색</b>	
기본 백업	<b>합성</b>	
보조 백업	<b>Ultraloc®</b>	
보호 처리	<b>SSP® Shaw 휴먼지 보호</b>	
권장 접착제	<b>1000 Broadloom 4 Gallon or 3800 Indoor Outdoor Broadloom 4 Gallon</b>	
	u.s.	metric
제품 크기	<b>12 ft</b>	<b>3.66 m</b>
계량기	<b>1/12 in</b>	<b>47.2 per 10 cm</b>
스티치	<b>11.5 per in</b>	<b>46.5 per 10 cm</b>
완성 된 말뚝 두께	<b>0.128 in</b>	<b>3.25 mm</b>
평균 밀도	<b>6750 oz/yd³</b>	<b>0.25 g/cm³</b>
킬로 텍스		<b>13.14</b>
총 두께	<b>0.275 in</b>	<b>6.99 mm</b>
술을다는 무게	<b>24 oz/yd²</b>	<b>813.7 g/m²</b>
설치 패턴 반복	<b>72 in x 36 in</b>	<b>182.88 cm x 91.44 cm</b>



### 권장 설치 방법

Direct Glue, Double Glue, Stretch-In

### 데이터 + 테스트

알약 테스트	<b>Pass</b>
복사 패널 (Astm E648)	<b>Class I</b>
Nbs 연기	<b>Less Than 450</b>
정전기 성향	<b>Less Than 3.5 kv</b>
Cri 그린 라벨 플러스 (Glp)	<b>GLP2271</b>
Ada 준수	<b>0.6 이상, ADA 보행 노면과 이용 가능한 경로의 권장 마찰계수 충족***</b>

Test Reports may be included or listed by the manufacturing/inventory style number as opposed to the noted selling style number.

### 보증

#### 종신 상용 제한

코디네이팅 제품

Sheet: **Tatami Sheet, Reed Sheet, Roji Sheet**  
Carpet Tile: **Botan Tile, Hana Tile, Kusa Tile**  
Broadloom: **Botan, Hana**

속성 + 인증

Health & Wellbeing

Material Ingredient Transparency

**Cradle to Cradle Certified® | Silver 레벨(버전 3.1)**  
**Health Product Declaration (HPD) | 1,000ppm 노출**  
**NSF 140 | 골드**

Indoor Air Quality

**CRI Green Label Plus (GLP) | GLP2271**

Climate Impact

Environmental Product Declaration (EPD)

**ISO14044, ISO14025 및 EN15804에 따라 타사 인증 획득**

Embodied Carbon (Cradle to Gate)

**11.6 (based upon 27.41 oz face weight) kg CO<sub>2</sub>/m<sup>2</sup>**

Total Recycled Content

**<1% (Pre-Consumer <1% | Post-Consumer 0%)**

Product Packaging

**100% 재활용 가능**

Global Product Assessment

**CE Marking (EN 14041) | 타사 인증 획득**

**Environmental Guarantee\* | Re[turn] Reclamation Program\* | Pickup & Delivery Available**

**Country of Origin\*\* | Imported**

Well V2 Contribution Credit

X08 Hazardous Material Reduction Part 1: Limit Hazardous Materials Optimization – 1 pt

**C2C 실버 레벨 (버전 3.1)**

X10 Volatile Compound Reduction Part 1 (A): Manage Volatile Organic Compounds (VOCs) Optimization – 1 pt

**C2C 실버 레벨 (버전 3.1)**

X11 Long Term Emissions Control Part 2: Flooring Optimization – 1 pt

**Green Label Plus Certification GLP2271**

X13 Enhanced Material Precaution Part 1: Select Optimized Materials Optimization – max 2 pts

**C2C 실버 레벨 (버전 3.1)**

X14 Material Transparency Part 1: Promote Ingredient Disclosure Optimization – max 2 pts

**C2C 실버 레벨 (버전 3.1)**

녹색의 공헌 기여 크레딧

MR 크레딧 : 제품 공개 및 최적화 구축  
환경 제품 선언-옵션 1 : 환경 제품 선언 (EPD)

**3rd Party Certified in Accordance with ISO14044, ISO14025 & EN15804**

MR 크레딧 : 제품 공개 및 최적화 구축  
재료 성분-옵션 1 : 재료 성분보고

**C2C 실버 레벨 (버전 3.1)**

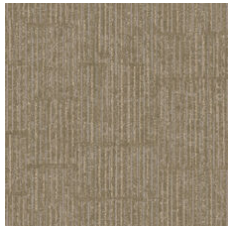
MR 크레딧 : 제품 공개 및 최적화 구축  
재료 성분-옵션 2 : 재료 성분 최적화

**C2C 실버 레벨 (버전 3.1)**

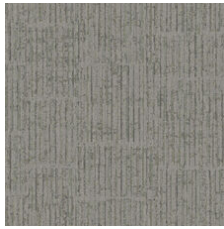
EQ 크레딧 : 저 발광 재료  
옵션 1 : 제품 범주 계산

**Green Label Plus 인증: GLP2271**

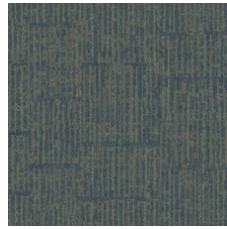
## Available Colorways



Sand 36103



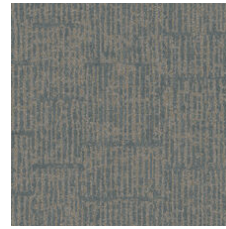
Pond 36300



Dragonfly 36315



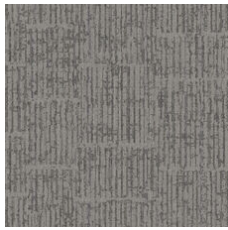
Bamboo 36335



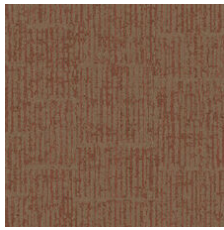
Sky 36447



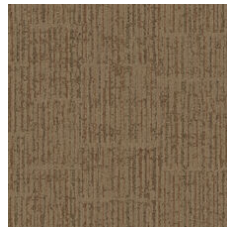
Lantern 36515



Stone 36530



Koi 36713



Pavillion 36715

## 추가 정보

\* To learn more about the recyclability of our products and our Environmental Guarantee, please visit [shawcontract.com/sustainability](https://shawcontract.com/sustainability).

\*\*Meets or exceeds all local and national regulations in country of manufacture. (Manufactured in an ISO 9001 & ISO 14001 certified facility or equivalent)

\*\*\*This carpet is manufactured to be ADA compliant, but to be fully ADA compliant, the end-user must ensure the carpet is adhered to the floor and installed as outlined in the ADA standards.

[Installation Guidelines](#)

[Maintenance Guidelines](#)

Specifications are subject to nominal manufacturing variance. Material supply and/or manufacturing processes may necessitate changes without notice.

This product is an exclusive design and may not be duplicated in any manner. Use of this design in the creation of another product design is also strictly prohibited.

Visit [shawcontract.com/testing](https://shawcontract.com/testing) for more information.



**PVC-Free**

Corporate Headquarters +1 800 257 7429 | +1 706 532 7984 | Atlanta +1 404 853 7429 | Bengaluru +91 80 6773 0202 | Beijing +86 10 6568 588 | Chicago +1 312 467 1331 | Dubai +971 4 584 6956 | Hong Kong +852 2623 0371 | London +44 207 961 4120 | Los Angeles +1 800 233 1614 | Melbourne +61 3 9939 8543 | Mexico City +55 5010 7600 | Mumbai +91 22 6284 5050 | Nantong +86 400 800 7429 | New York +1 212 953 7429 | Paris +33 (0) 1 81 22 44 39 | San Francisco +1 415 955 1920 | Shanghai +86 21 3338 4000 | Singapore +65 6733 1811 | Sydney +61 800 556 302

© 2025 Shaw Industries Group, Inc., a Berkshire Hathaway Company  
June 8, 2025

3 of 3