

Strata

Product Type	Broadloom
Collection	Noble Materials
Style Number	5A220
Construction	Multi-Level Pattern Cut/Loop
Fiber	Ecosolution Q® Nylon
Dye Method	100% Solution Dyed
Primary Backing	Synthetic
Secondary Backing	Ultraloc®
Protective Treatments	SSP® Shaw Soil Protection
Recommended Adhesive	1000 Broadloom 4 Gallon or 3800 Indoor Outdoor Broadloom 4 Gallon

	u.s.	metric
Product Size	12 ft	3.66 m
Gauge	1/11 in	43.3 per 10 cm
Stitches	11.0 per in	43.0 per 10 cm
Finished Pile Thickness	0.240 in	6.1 mm
Average Density	6000 oz/yd³	0.222 g/cm³
Kilotex		10.95
Total Thickness	0.395 in	10.03 mm
Tufted Weight	40 oz/yd²	1356.2 g/m²
Installation Pattern Repeat	24 in x 24 in	61 cm x 61 cm



Recommended Installation Method

Direct Glue, Double Glue, Stretch-In

Performance + Testing

Pill Test	Pass
Radiant Panel	Class I
NBS Smoke	Less Than 450
Electrostatic Propensity	Less Than 3.5 kv
CRI Green Label Plus (GLP)	GLP2271
ADA Compliance	>0.6, meets the recommended static coefficient of friction for ADA walking surfaces and accessible routes***

Test Reports may be included or listed by the manufacturing/inventory style number as opposed to the noted selling style number.

Warranties

Lifetime Commercial Limited Warranty

Diversity & Inclusion

We promote supplier participation that is reflective of Shaw Industries' diverse customer base and local community. We believe having a strong Supplier Diversity Program is strategic for bringing more innovation to our businesses and opening new markets for growth.

Coordinating Products

LVT: **Emerge**

Carpet Tile: **Slab Tile, Honed Tile, Alchemy Tile, Form Tile**

Broadloom: **Monolith Woven, Base Metal Woven, Fault**

Material Health & Environmental Certifications

Health & Wellbeing

Material Ingredient Transparency

Cradle to Cradle Certified® | Silver Level (Version 3.1)  
Health Product Declaration (HPD) | 1,000 ppm Disclosure  
NSF 140 | Gold

Indoor Air Quality

CRI Green Label Plus (GLP) | GLP2271

Climate Impact

Environmental Product Declaration (EPD)

3rd Party Certified in Accordance with ISO14044, ISO14025 & EN15804

Embodied Carbon (Cradle to Gate)

11.6 (based upon 27.41 oz face weight) kg CO<sub>2</sub>/m<sup>2</sup>

Total Recycled Content

<1% (Pre-Consumer <1% | Post-Consumer 0%)

Product Packaging

100% Recyclable

Global Product Assessment

CE Marking (EN 14041) | 3rd Party Certified

Environmental Guarantee\* | Re[turn] Reclamation Program\* | Pickup & Delivery Available

Country of Origin\*\* | USA

WELL V2 Contribution Credit

X08 Hazardous Material Reduction  
Part 1: Limit Hazardous Materials Optimization

C2C Silver Level (Version 3.1)

X10 Volatile Compound Reduction  
Part 1 (A): Manage Volatile Organic Compounds (VOCs) Optimization

C2C Silver Level (Version 3.1)

X11 Long Term Emissions Control  
Part 2: Flooring Optimization

Green Label Plus Certification GLP2271

X13 Enhanced Material Precaution  
Part 1: Select Optimized Materials Optimization

C2C Silver Level (Version 3.1)

X14 Material Transparency  
Part 1: Promote Ingredient Disclosure Optimization

C2C Silver Level (Version 3.1)

Leed v4 Contribution Credits

MR Credit: Building Product Disclosure and Optimization  
Environmental Product Declarations - Option 1: Environmental Product Declaration (EPD)

3rd Party Certified in Accordance with ISO14044, ISO14025 & EN15804

MR Credit: Building Product Disclosure and Optimization  
Material Ingredients - Option 1: Material Ingredient Reporting

C2C Silver Level (Version 3.1)

MR Credit: Building Product Disclosure and Optimization  
Material Ingredients - Option 2: Material Ingredient Optimization

C2C Silver Level (Version 3.1)

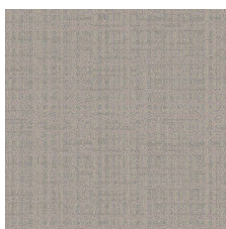
EQ Credit: Low Emitting Materials  
Option 1: Product Category Calculations

Green Label Plus Certification: GLP2271

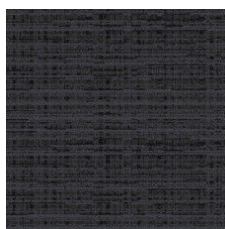
## Available Colorways



Carrara 20100  
LRV 39.9 | L\* 69.41



Alabaster 20111  
LRV 25.1 | L\* 57.14



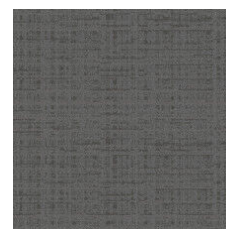
Colossal 20496  
LRV 3.5 | L\* 22.06



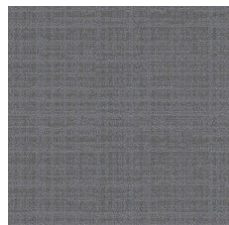
Onyx 20505  
LRV 1.8 | L\* 14.2



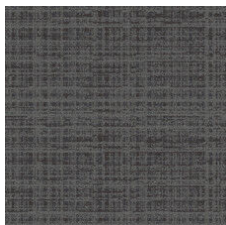
Element 20506  
LRV 17.5 | L\* 48.9



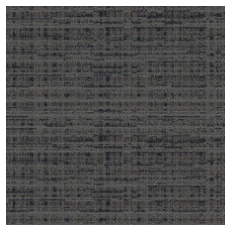
Forge 20518  
LRV 8.9 | L\* 35.74



Talc 20535  
LRV 13.8 | L\* 43.91



Cornerstone 20555  
LRV 7.9 | L\* 33.83



Slate 20595  
LRV 5.8 | L\* 28.78

## Additional Information

\* To learn more about the recyclability of our products and our Environmental Guarantee, please visit [shawcontract.com/sustainability](https://shawcontract.com/sustainability).

\*\*Meets or exceeds all local and national regulations in country of manufacture. (Manufactured in an ISO 9001 & ISO 14001 certified facility or equivalent)

\*\*\*This carpet is manufactured to be ADA compliant, but to be fully ADA compliant, the end-user must ensure the carpet is adhered to the floor and installed as outlined in the ADA standards.

[Installation Guidelines](#)

[Maintenance Guidelines](#)

Specifications are subject to nominal manufacturing variance. Material supply and/or manufacturing processes may necessitate changes without notice.

This product is an exclusive design and may not be duplicated in any manner. Use of this design in the creation of another product design is also strictly prohibited.

Visit [shawcontract.com/testing](https://shawcontract.com/testing) for more information.



**PVC-Free**

Corporate Headquarters +1 800 257 7429 | +1 706 532 7984 | Atlanta +1 404 853 7429 | Bengaluru +91 80 6773 0202 | Beijing +86 10 6568 588 | Chicago +1 312 467 1331 | Dubai +971 4 584 6956 | Hong Kong +852 2623 0371 | London +44 207 961 4120 | Los Angeles +1 800 233 1614 | Melbourne +61 3 9939 8543 | Mexico City +55 5010 7600 | Mumbai +91 22 6284 5050 | Nantong +86 400 800 7429 | New York +1 212 953 7429 | Paris +33 (0) 1 81 22 44 39 | San Francisco +1 415 955 1920 | Shanghai +86 21 3338 4000 | Singapore +65 6733 1811 | Sydney +61 800 556 302

© 2025 Shaw Industries Group, Inc., a Berkshire Hathaway Company  
July 2, 2025

3 of 3