

## Strata

Tipo De Produto	<b>Carpete Em Rolo</b>
Coleção	<b>Noble Materials</b>
Número Do Produto	<b>5A220</b>
Construção	<b>Padrão Multinível / Pêlo Cortado/Bouclé</b>
Fibra	<b>Ecosolution Q® Nylon</b>
Método De Tingimento	<b>100% Solution Dyed</b>
Base Primária	<b>Sintético</b>
Base Secundária	<b>Ultraloc®</b>
Tratamentos De Proteção	<b>SSP® Shaw Proteção Anti-Manchas</b>
Adesivo Recomendado	<b>1000 Broadloom 4 Gallon or 3800 Indoor Outdoor Broadloom 4 Gallon</b>

	u.s.	metric
Tamanho Do Produto	<b>12 ft</b>	<b>3.66 m</b>
Calibre	<b>1/11 in</b>	<b>43.3 per 10 cm</b>
Pontos	<b>11.0 per in</b>	<b>43.0 per 10 cm</b>
Espessura Da Fibra Acabada	<b>0.240 in</b>	<b>6.1 mm</b>
Densidade Média	<b>6000 oz/yd<sup>3</sup></b>	<b>0.222 g/cm<sup>3</sup></b>
Kilotex		<b>10.95</b>
Espessura Total	<b>0.395 in</b>	<b>10.03 mm</b>
Peso Da Fibra	<b>40 oz/yd<sup>2</sup></b>	<b>1356.2 g/m<sup>2</sup></b>
Repetição Do Padrão Na Instalação	<b>24 in x 24 in</b>	<b>61 cm x 61 cm</b>



## Método De Instalação Recomendado

Direct Glue, Double Glue, Stretch-In

## Dados + Teste

Teste De Ignição (Pill)	<b>Pass</b>
Painel Radiante (Astm E648)	<b>Class I</b>
Nbs Fumaça	<b>Less Than 450</b>
Propensão Eletrostática	<b>Less Than 3.5 kv</b>
Cri Green Label Plus (Bpl)	<b>GLP2271</b>
Ada Compliance	<b>≥0.6, Atende as recomendações do coeficiente de fricção estático para as superfícies caminháveis ADA e rotas acessíveis***</b>

Test Reports may be included or listed by the manufacturing/inventory style number as opposed to the noted selling style number.

## Garantias

[Garantia Comercial Vitalícia Limitada](#)

Produtos Coordenados

LVT: **Emerge**  
Carpet Tile: **Slab Tile, Honed Tile, Alchemy Tile, Form Tile**  
Broadloom: **Monolith Woven, Base Metal Woven, Fault**

Atributos + Certificações

Health & Wellbeing	
Material Ingredient Transparency	<b>Cradle to Cradle Certified®   Nível Prata (Versão 3.1)</b> <b>Health Product Declaration (HPD)   Divulgado 1,000 ppm</b> <b>NSF 140   Ouro</b>
Indoor Air Quality	<b>CRI Green Label Plus (GLP)   GLP2271</b>
Climate Impact	
Environmental Product Declaration (EPD)	<b>3rd Party Certified De Acordo Com ISO14044, ISO14025 &amp; EN15804</b>
Embodied Carbon (Cradle to Gate)	<b>11.6 (based upon 27.41 oz face weight) kg CO<sub>2</sub>/m<sup>2</sup></b>
Total Recycled Content	<b>&lt;1% (Pre-Consumer &lt;1%   Post-Consumer 0%)</b>
Product Packaging	<b>100% Reciclável</b>
Global Product Assessment	<b>CE Marking (EN 14041)   Certificado 3rd Party</b> <b>Environmental Guarantee*   Re[turn] Reclamation Program*   Pickup &amp; Delivery Available</b> <b>Country of Origin**   Imported</b>

Well V2 Contribution Credit

X08 Hazardous Material Reduction Part 1: Limit Hazardous Materials Optimization – 1 pt	<b>C2C Nível Prata (Versão 3.1)</b>
X10 Volatile Compound Reduction Part 1 (A): Manage Volatile Organic Compounds (VOCs) Optimization – 1 pt	<b>C2C Nível Prata (Versão 3.1)</b>
X11 Long Term Emissions Control Part 2: Flooring Optimization – 1 pt	<b>Green Label Plus Certification GLP2271</b>
X13 Enhanced Material Precaution Part 1: Select Optimized Materials Optimization – max 2 pts	<b>C2C Nível Prata (Versão 3.1)</b>
X14 Material Transparency Part 1: Promote Ingredient Disclosure Optimization – max 2 pts	<b>C2C Nível Prata (Versão 3.1)</b>

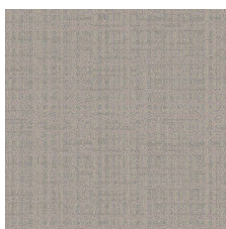
Crédito De Contribuição

MR Credit: Divulgação e otimização de produtos de construção Declarações ambientais do produto - Opção 1: Declaração ambiental do produto (EPD)	<b>3rd Party Certified in Accordance with ISO14044, ISO14025 &amp; EN15804</b>
MR Credit: Divulgação e otimização de produtos de construção Ingredientes materiais - Opção 1: Relatório de ingredientes materiais	<b>C2C Nível Prata (Versão 3.1)</b>
MR Credit: Divulgação e otimização de produtos de construção Ingredientes do material - Opção 2: Otimização do ingrediente do material	<b>C2C Nível Prata (Versão 3.1)</b>
Crédito de EQ: Materiais de baixa emissão Opção 1: cálculos de categoria de produto	<b>Certificação Green Label Plus: GLP2271</b>

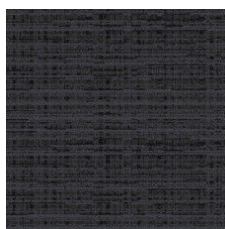
## Available Colorways



Carrara 20100  
LRV 39.9 | L\* 69.41



Alabaster 20111  
LRV 25.1 | L\* 57.14



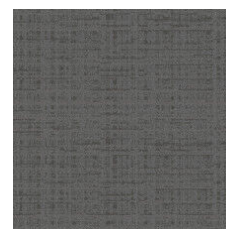
Colossal 20496  
LRV 3.5 | L\* 22.06



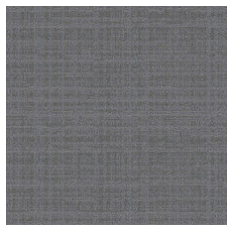
Onyx 20505  
LRV 1.8 | L\* 14.2



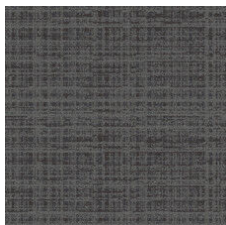
Element 20506  
LRV 17.5 | L\* 48.9



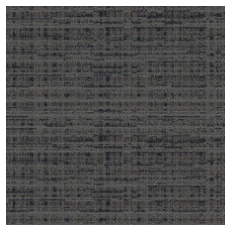
Forge 20518  
LRV 8.9 | L\* 35.74



Talc 20535  
LRV 13.8 | L\* 43.91



Cornerstone 20555  
LRV 7.9 | L\* 33.83



Slate 20595  
LRV 5.8 | L\* 28.78

## Informação Adicional

\* To learn more about the recyclability of our products and our Environmental Guarantee, please visit [shawcontract.com/sustainability](https://shawcontract.com/sustainability).

\*\*Meets or exceeds all local and national regulations in country of manufacture. (Manufactured in an ISO 9001 & ISO 14001 certified facility or equivalent)

\*\*\*This carpet is manufactured to be ADA compliant, but to be fully ADA compliant, the end-user must ensure the carpet is adhered to the floor and installed as outlined in the ADA standards.

[Installation Guidelines](#)

[Maintenance Guidelines](#)

Specifications are subject to nominal manufacturing variance. Material supply and/or manufacturing processes may necessitate changes without notice.

This product is an exclusive design and may not be duplicated in any manner. Use of this design in the creation of another product design is also strictly prohibited.

Visit [shawcontract.com/testing](https://shawcontract.com/testing) for more information.



**PVC-Free**

Corporate Headquarters +1 800 257 7429 | +1 706 532 7984 | Atlanta +1 404 853 7429 | Bengaluru +91 80 6773 0202 | Beijing +86 10 6568 588 | Chicago +1 312 467 1331 | Dubai +971 4 584 6956 | Hong Kong +852 2623 0371 | London +44 207 961 4120 | Los Angeles +1 800 233 1614 | Melbourne +61 3 9939 8543 | Mexico City +55 5010 7600 | Mumbai +91 22 6284 5050 | Nantong +86 400 800 7429 | New York +1 212 953 7429 | Paris +33 (0) 1 81 22 44 39 | San Francisco +1 415 955 1920 | Shanghai +86 21 3338 4000 | Singapore +65 6733 1811 | Sydney +61 800 556 302

© 2025 Shaw Industries Group, Inc., a Berkshire Hathaway Company  
July 1, 2025

3 of 3