

Strata

Product Type	Broadloom	
Collection	Noble Materials	
Style Number	5A220	
Construction	Multi-Level Pattern/Cut Loop	
Fiber	Ecosolution Q® Nylon	
Dye Method	100% Solution Dyed	
Primary Backing	Synthetic	
Secondary Backing	Ultraloc®	
Protective Treatments	SSP® Shaw Soil Protection	
Recommended Adhesive	H1000, H1200 or H3800	
	u.s.	metric
Product Size	12 ft	3.66 m
Gauge	1/11 in	43.3 per 10 cm
Stitches	11.0 per in	43.0 per 10 cm
Average Density	6000 oz/yd³	0.222 g/cm³
Kilotex		10.95
Total Thickness	0.395 in	10.03 mm
Tufted Weight	40 oz/yd²	1356.2 g/m²
Installation Pattern Repeat	24 in x 24 in	61 cm x 61 cm



Recommended Installation Method

Direct Glue, Double Glue, Stretch-In

Data + Testing

Pill Test	Pass
Radiant Panel	Class I
Nbs Smoke	Less Than 450
Electrostatic Propensity	Less Than 3.5 kv
Cri Green Label Plus (Glp)	GLP2271
Ada Compliance	>0.6, Meets the recommended static coefficient of friction for ADA walking surfaces and accessible routes***

Test Reports may be included or listed by the manufacturing/inventory style number as opposed to the noted selling style number.

Warranties

Lifetime Commercial Limited

Coordinating Products

LVT: **Emerge**
Carpet Tile: **Slab Tile, Honed Tile, Alchemy Tile, Form Tile**
Broadloom: **Monolith Woven, Base Metal Woven, Fault**


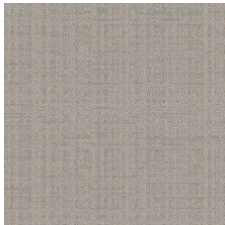
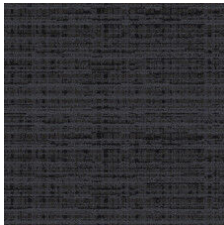

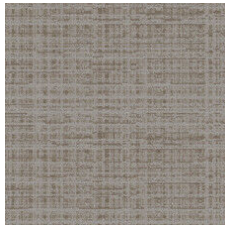
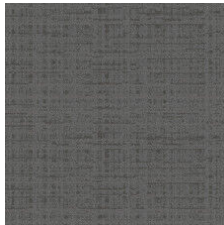
Material Health & Environmental Certifications

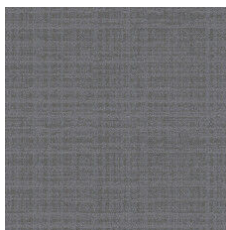
Health & Wellbeing	
Material Ingredient Transparency	Cradle to Cradle Certified® Silver Level (Version 3.1) NSF 140 Gold
Indoor Air Quality	CRI Green Label Plus (GLP) GLP2271
Climate Impact	
Environmental Product Declaration (EPD)	3rd Party Certified in Accordance with ISO14044, ISO14025 & EN15804
Total Recycled Content	<1% (Pre-Consumer <1% Post-Consumer 0%)
Product Packaging	100% Recyclable
Global Product Assessment	CE Marking (EN 14041) 3rd Party Certified
	Environmental Guarantee* Re[turn] Reclamation Program* Pickup & Delivery Available
	Country of Origin** USA

Green Leed Contribution Credit

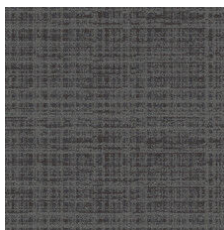
MR Credit: Building Product Disclosure and Optimization Environmental Product Declarations - Option 1: Environmental Product Declaration (EPD)	3rd Party Certified in Accordance with ISO14044, ISO14025 & EN15804
MR Credit: Building Product Disclosure and Optimization Material Ingredients - Option 1: Material Ingredient Reporting	C2C Silver Level (Version 3.1)
MR Credit: Building Product Disclosure and Optimization Material Ingredients - Option 2: Material Ingredient Optimization	C2C Silver Level (Version 3.1)
EQ Credit: Low Emitting Materials Option 1: Product Category Calculations	Green Label Plus Certification: GLP2271

Available Colorways

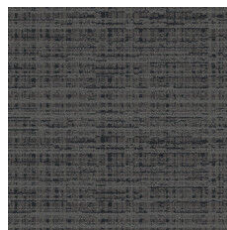
					
Carrara 20100 LRV 39.9	Alabaster 20111 LRV 25.1	Colossal 20496 LRV 3.5	Onyx 20505 LRV 1.8	Element 20506 LRV 17.5	Forge 20518 LRV 8.9



Talc 20535
LRV 13.8



Cornerstone 20555
LRV 7.9



Slate 20595
LRV 5.8

Additional Information

* To learn more about the recyclability of our products and our Environmental Guarantee, please visit shawcontract.com/sustainability.

**Meets or exceeds all local and national regulations in country of manufacture. (Manufactured in an ISO 9001 & ISO 14001 certified facility or equivalent)

***This carpet is manufactured to be ADA compliant, but to be fully ADA compliant, the end-user must ensure the carpet is adhered to the floor and installed as outlined in the ADA standards.

[Installation Guidelines](#)

[Maintenance Guidelines](#)

Specifications are subject to nominal manufacturing variance. Material supply and/or manufacturing processes may necessitate changes without notice.

This product is an exclusive design and may not be duplicated in any manner. Use of this design in the creation of another product design is also strictly prohibited.

Visit shawcontract.com/testing for more information.



PVC-Free

Corporate Headquarters +1 800 257 7429 | +1 706 532 7984 | **Atlanta** +1 404 853 7429 | **Bengaluru** +91 80 6773 0202 | **Beijing** +86 10 6568 588 | **Chicago** +1 312 467 1331 | **Dubai** +971 4 584 6956 | **Hong Kong** +852 2623 0371 | **Latin America (Miami)** +1 305 827 5912 | **London** +44 207 961 4120 | **Los Angeles** +1 800 233 1614 | **Melbourne** +61 3 9939 8543 | **Mexico City** +55 5010 7600 | **Mumbai** +91 22 6284 5050 | **Nantong** +86 400 800 7429 | **New York** +1 212 953 7429 | **Paris** +33 (0) 1 81 22 44 39 | **San Francisco** +1 415 955 1920 | **Santiago** +562 2431 5000 x 550 | **São Paulo** +55 11 3071 1702 | **Shanghai** +86 21 3338 4000 | **Singapore** +65 6733 1811 | **Sydney** +1 800 556 302