

Scenery

Product Type	Broadloom	
Collection	Living Environments	
Style Number	5A255	
Construction	Textured Cut/Loop	
Fibre	Nylon	
Primary Backing	Synthetic	
Secondary Backing	Classicbac®	
Protective Treatments	SSP® Shaw Soil Protection	
Recommended Adhesive	H1000, H1200 or H3800	
	u.s.	metric
Product Size	12 ft	3.66 m
Gauge	1/8 in	31.5 per 10 cm
Stitches	11.0 per in	43.0 per 10 cm
Average Density	2432 oz/yd³	0.09 g/cm³
Kilotex		6.64
Total Thickness	0.409 in	10.39 mm
Tufted Weight	25 oz/yd²	847.6 g/m²
Installation Pattern Repeat	1.25 in x 1 in	3.18 cm x 2.54 cm



Recommended Installation Method

Direct Glue, Double Glue, Stretch-In

Product should be installed in rooms only applications.

When installing in hybrid locations with carpet and resilient, direct glue with LokSeam is recommended.

Data + Testing

Pill Test	Pass
Cri Green Label Plus (Glp)	GLP8878
Ada Compliance	>0.6, Meets the recommended static coefficient of friction for ADA walking surfaces and accessible routes***

Test Reports may be included or listed by the manufacturing/inventory style number as opposed to the noted selling style number.

Coordinating Products

Broadloom: **Statement, Upscale, Imagery, Sentiment**

Attributes + Certifications

Health & Wellbeing

Material Ingredient Transparency

Indoor Air Quality

Cradle to Cradle Certified® | Silver Level (Version 3.1)
NSF 140 | Gold
CRI Green Label Plus (GLP) | GLP8878

Climate Impact

Environmental Product Declaration (EPD)

Total Recycled Content

Product Packaging

3rd Party Certified in Accordance with ISO14044, ISO14025 & EN15804
<1% (Pre-Consumer <1% | Post-Consumer 0%)
100% Recyclable

Global Product Assessment

CE Marking (EN 14041) | 3rd Party Certified
Environmental Guarantee* | Re[turn] Reclamation Program* | Pickup & Delivery Available
Country of Origin | USA**

Green Leed Contribution Credit

MR Credit: Building Product Disclosure and Optimization
Environmental Product Declarations - Option 1: Environmental Product Declaration (EPD)

3rd Party Certified in Accordance with ISO14044, ISO14025 & EN15804

MR Credit: Building Product Disclosure and Optimization
Material Ingredients - Option 1: Material Ingredient Reporting

C2C Silver Level (Version 3.1)

MR Credit: Building Product Disclosure and Optimization
Material Ingredients - Option 2: Material Ingredient Optimization

C2C Silver Level (Version 3.1)

EQ Credit: Low Emitting Materials
Option 1: Product Category Calculations

Green Label Plus Certification: GLP8878

Available Colorways

					
Setting 00170	Outlook 00171	Moment 00172	Charming 00173	Picturesque 00175	Neighborhood 00182
					
Picket Fence 00183	View 00184	Skylit 00473	Flora 00477	Waterside 00480	Painterly 00481



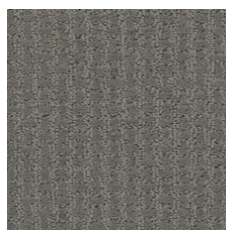
Courtyard 00570



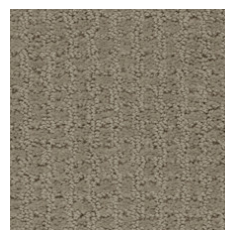
Terrace 00574



Veranda 00576



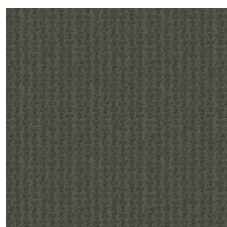
Backdrop 00577



Artistry 00770



Vintage 00771



Cottage 00773



Vista 00783

Additional Information

* To learn more about the recyclability of our products and our Environmental Guarantee, please visit shawcontract.com/sustainability.

**Meets or exceeds all local and national regulations in country of manufacture. (Manufactured in an ISO 9001 & ISO 14001 certified facility or equivalent)

***This carpet is manufactured to be ADA compliant, but to be fully ADA compliant, the end-user must ensure the carpet is adhered to the floor and installed as outlined in the ADA standards.

[Installation Guidelines](#)

[Maintenance Guidelines](#)

Specifications are subject to nominal manufacturing variance. Material supply and/or manufacturing processes may necessitate changes without notice.

This product is an exclusive design and may not be duplicated in any manner. Use of this design in the creation of another product design is also strictly prohibited.

Visit shawcontract.com/testing for more information.



PVC-Free

Corporate Headquarters +1 800 257 7429 | +1 706 532 7984 | Atlanta +1 404 853 7429 | Bengaluru +91 80 6773 0202 | Beijing +86 10 6568 588 | Chicago +1 312 467 1331 | Dubai +971 4 584 6956 | Hong Kong +852 2623 0371 | Latin America (Miami) +1 305 827 5912 | London +44 207 961 4120 | Los Angeles +1 800 233 1614 | Melbourne +61 3 9939 8543 | Mexico City +55 5010 7600 | Mumbai +91 22 6284 5050 | Nantong +86 400 800 7429 | New York +1 212 953 7429 | Paris +33 (0) 1 81 22 44 39 | San Francisco +1 415 955 1920 | Santiago +562 2431 5000 x 550 | São Paulo +55 11 3071 1702 | Shanghai +86 21 3338 4000 | Singapore +65 6733 1811 | Sydney +1 800 556 302