

Scenery

| | | |
|-----------------------------|---------------------------|-------------------|
| Product Type | Broadloom | |
| Collection | Living Environments | |
| Style Number | 5A255 | |
| Construction | Textured Cut/Loop | |
| Fiber | Nylon | |
| Primary Backing | Synthetic | |
| Secondary Backing | Classicbac® | |
| Protective Treatments | SSP® Shaw Soil Protection | |
| Recommended Adhesive | H1000, H1200 or H3800 | |
| | u.s. | metric |
| Product Size | 12 ft | 3.66 m |
| Gauge | 1/8 in | 31.5 per 10 cm |
| Stitches | 11.0 per in | 43.0 per 10 cm |
| Average Density | 2432 oz/yd³ | 0.09 g/cm³ |
| Kilotex | | 6.64 |
| Total Thickness | 0.409 in | 10.39 mm |
| Tufted Weight | 25 oz/yd² | 847.6 g/m² |
| Installation Pattern Repeat | 1.25 in x 1 in | 3.18 cm x 2.54 cm |



Recommended Installation Method

Direct Glue, Double Glue, Stretch-In

Product should be installed in rooms only applications.

When installing in hybrid locations with carpet and resilient, direct glue with LokSeam is recommended.

Data + Testing

| | |
|----------------------------|--|
| Pill Test | Pass |
| Cri Green Label Plus (Glp) | GLP8878 |
| Ada Compliance | >0.6, Meets the recommended static coefficient of friction for ADA walking surfaces and accessible routes*** |

Test Reports may be included or listed by the manufacturing/inventory style number as opposed to the noted selling style number.

Coordinating Products

COREtec: **Repose**

Sheet: **Adventure Sheet**

Broadloom: **Reimagine, Statement, Niche, Novice, Prepare, Noted, Nook, Remedy I, Remedy II, Personable, Prominent, Endeavor, Cocoon, Prolific Solid, Prolific Berber, Enhance Tonal, Enhance Solid, Upscale, Imagery, Sentiment**

Material Health & Environmental Certifications

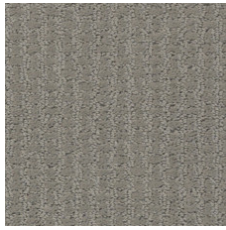
| | |
|---|--|
| Health & Wellbeing | |
| Material Ingredient Transparency | Cradle to Cradle Certified® Silver Level (Version 3.1) NSF 140 Gold |
| Indoor Air Quality | CRI Green Label Plus (GLP) GLP8878 |
| Climate Impact | |
| Environmental Product Declaration (EPD) | 3rd Party Certified in Accordance with ISO14044, ISO14025 & EN15804 |
| Total Recycled Content | <1% (Pre-Consumer <1% Post-Consumer 0%) |
| Product Packaging | 100% Recyclable |
| Global Product Assessment | CE Marking (EN 14041) 3rd Party Certified Environmental Guarantee* Re[turn] Reclamation Program* Pickup & Delivery Available Country of Origin** USA |

Green Leed Contribution Credit

| | |
|---|---|
| MR Credit: Building Product Disclosure and Optimization Environmental Product Declarations - Option 1: Environmental Product Declaration (EPD) | 3rd Party Certified in Accordance with ISO14044, ISO14025 & EN15804 |
| MR Credit: Building Product Disclosure and Optimization Material Ingredients - Option 1: Material Ingredient Reporting | C2C Silver Level (Version 3.1) |
| MR Credit: Building Product Disclosure and Optimization Material Ingredients - Option 2: Material Ingredient Optimization | C2C Silver Level (Version 3.1) |
| EQ Credit: Low Emitting Materials Option 1: Product Category Calculations | Green Label Plus Certification: GLP8878 |

Available Colorways

| | | | | | |
|--|---|---|--|---|---|
|  |  |  |  |  |  |
| Setting 00170 | Outlook 00171 | Moment 00172 | Charming 00173 | Picturesque 00175 | Neighborhood 00182 |
|  |  |  |  |  |  |
| Picket Fence 00183 | View 00184 | Skylit 00473 | Flora 00477 | Waterside 00480 | Painterly 00481 |



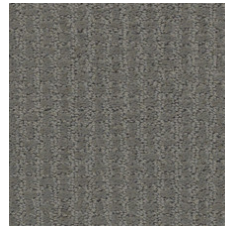
Courtyard 00570



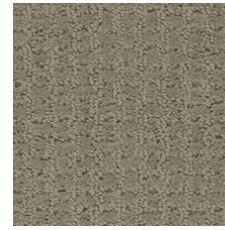
Terrace 00574



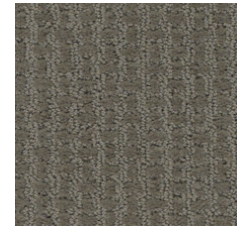
Veranda 00576



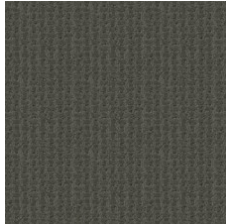
Backdrop 00577



Artistry 00770



Vintage 00771



Cottage 00773



Vista 00783

Additional Information

* To learn more about the recyclability of our products and our Environmental Guarantee, please visit shawcontract.com/sustainability.

**Meets or exceeds all local and national regulations in country of manufacture. (Manufactured in an ISO 9001 & ISO 14001 certified facility or equivalent)

***This carpet is manufactured to be ADA compliant, but to be fully ADA compliant, the end-user must ensure the carpet is adhered to the floor and installed as outlined in the ADA standards.

[Installation Guidelines](#)

[Maintenance Guidelines](#)

Specifications are subject to nominal manufacturing variance. Material supply and/or manufacturing processes may necessitate changes without notice.

This product is an exclusive design and may not be duplicated in any manner. Use of this design in the creation of another product design is also strictly prohibited.

Visit shawcontract.com/testing for more information.



PVC-Free

Corporate Headquarters +1 800 257 7429 | +1 706 532 7984 | **Atlanta** +1 404 853 7429 | **Bengaluru** +91 80 6773 0202 | **Beijing** +86 10 6568 588 | **Chicago** +1 312 467 1331 | **Dubai** +971 4 584 6956 | **Hong Kong** +852 2623 0371 | **Latin America (Miami)** +1 305 827 5912 | **London** +44 207 961 4120 | **Los Angeles** +1 800 233 1614 | **Melbourne** +61 3 9939 8543 | **Mexico City** +55 5010 7600 | **Mumbai** +91 22 6284 5050 | **Nantong** +86 400 800 7429 | **New York** +1 212 953 7429 | **Paris** +33 (0) 1 81 22 44 39 | **San Francisco** +1 415 955 1920 | **Santiago** +562 2431 5000 x 550 | **São Paulo** +55 11 3071 1702 | **Shanghai** +86 21 3338 4000 | **Singapore** +65 6733 1811 | **Sydney** +1 800 556 302