

Statement

製品型	Broadloom	
コレクション	Living Environments	
スタイルナンバー	5A257	
建設	テクスチャードループ	
ファイバ	ナイロン	
一次バックイング	合成	
二次バックイング	Classicbac®	
保護治療	SSP@shaw 土壌保護保証	
推奨接着剤	1000 Broadloom 4 Gallon, Shaw 1200 or 3800 Indoor Outdoor Broadloom 4 Gallon	
	u.s.	metric
商品のサイズ	12 ft	3.66 m
ゲージ	5/32 in	25.2 per 10 cm
ステッチ	10.0 per in	40.0 per 10 cm
完成した杭の厚さ	0.170 in	4.32 mm
平均密度	5294 oz/yd³	0.196 g/cm³
キロテックス		8.12
総厚	0.338 in	8.59 mm
房状の重量	25.3 oz/yd²	857.8 g/m²
インストールパターン リピート	1 in x .625 in	2.54 cm x 1.59 cm



推奨インストール方法

Direct Glue, Double Glue, Stretch-In

Product should be installed in rooms only applications.

When installing in hybrid locations with carpet and resilient, direct glue with LokSeam is recommended.

データ + テスト

錠剤テスト	Pass
Cri Green Label Plus (glp)	GLP8878
Adaコンプライアンス	>0.6、ADA 歩行面およびアクセス可能ルート用推奨静摩擦係数の基準に合致***
Test Reports may be included or listed by the manufacturing/inventory style number as opposed to the noted selling style number.	

コーディネート商品

Sheet: **Adventure Sheet**

Broadloom: **Scenery**

属性+認定

Health & Wellbeing

Material Ingredient Transparency

Cradle to Cradle Certified® | シルバーレベル (バージョン 3.1)  
NSF 140 | ゴールド

Indoor Air Quality

CRI Green Label Plus (GLP) | GLP8878

Climate Impact

Environmental Product Declaration (EPD)

ISO 14044、ISO 14025 および EN15804 に基づく 第三者認証取得

Total Recycled Content

<1% (Pre-Consumer <1% | Post-Consumer 0%)

Product Packaging

100% リサイクル可能

Global Product Assessment

CE Marking (EN 14041) | 第三者認証取得

Environmental Guarantee\* | Re[turn] Reclamation Program\* | Pickup & Delivery Available

Country of Origin\*\* | Imported

グリーンリード貢献クレジット

MRクレジット：製品の開示と最適化の構築  
環境製品宣言-オプション1：環境製品宣言 (EPD)

3rd Party Certified in Accordance with ISO 14044, ISO 14025 & EN15804

MRクレジット：製品の開示と最適化の構築  
材料成分-オプション1：材料成分レポート

C2C Silver Level (Version 3.1)

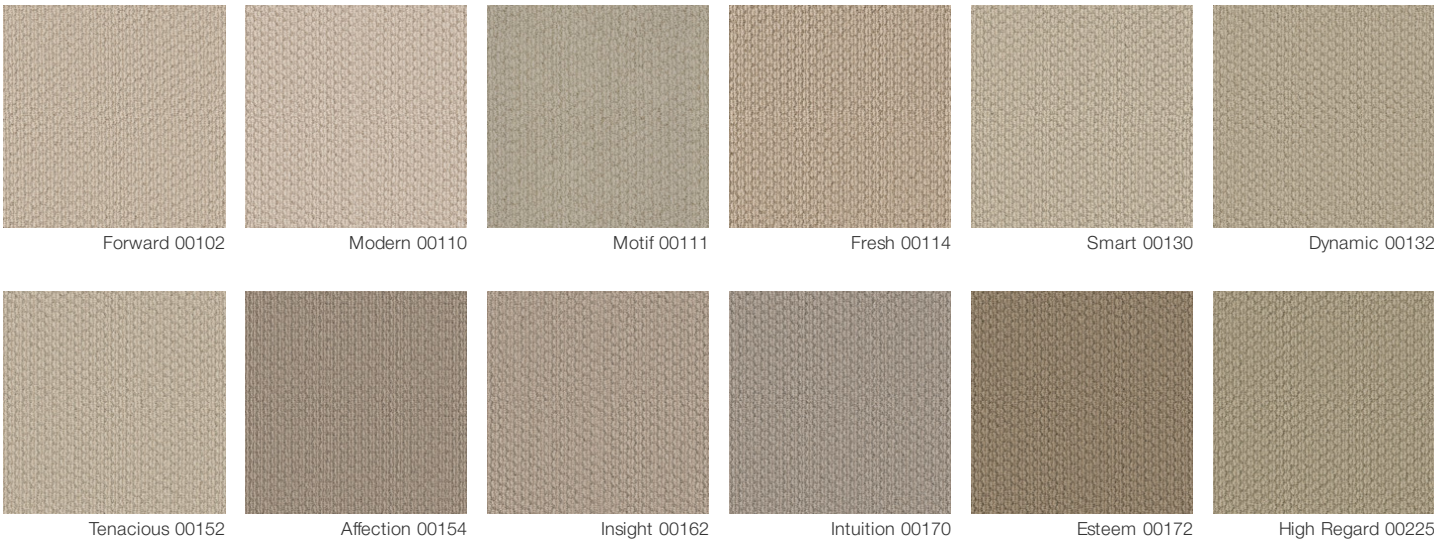
MRクレジット：製品の開示と最適化の構築  
材料成分-オプション2：材料成分の最適化

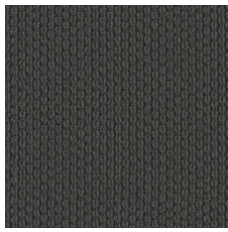
C2C Silver Level (Version 3.1)

EQクレジット：低排出材料  
オプション1：製品カテゴリの計算

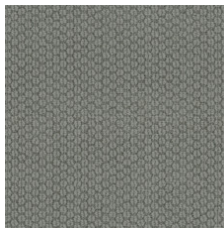
Green Label Plus Certification: GLP8878

Available Colorways

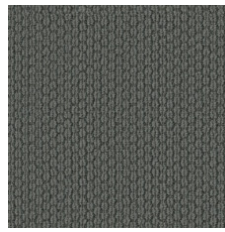




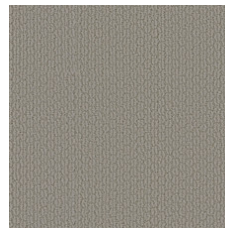
Character 00449



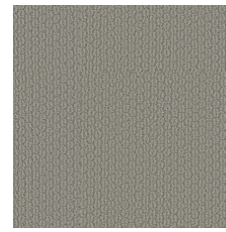
Perspective 00454



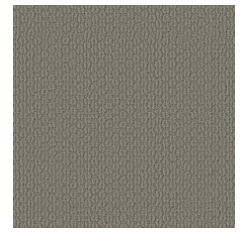
Menagerie 00456



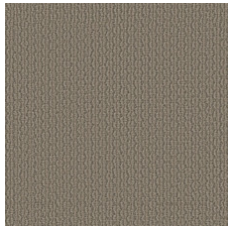
Gallery 00512



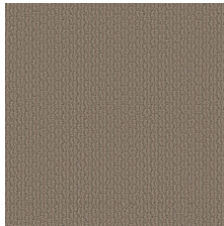
Presence 00523



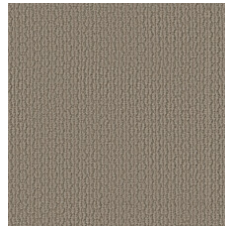
Veranda 00552



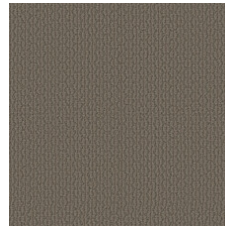
Mezzanine 00557



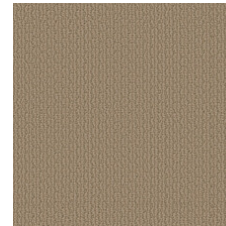
Bespoke 00573



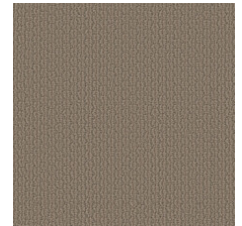
Metaphor 00574



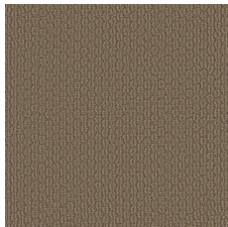
Analogy 00576



Allusion 00724



Simile 00753



Parable 00774

## 追加情報

\* To learn more about the recyclability of our products and our Environmental Guarantee, please visit [shawcontract.com/sustainability](https://shawcontract.com/sustainability).

\*\*Meets or exceeds all local and national regulations in country of manufacture. (Manufactured in an ISO 9001 & ISO 14001 certified facility or equivalent)

\*\*\*This carpet is manufactured to be ADA compliant, but to be fully ADA compliant, the end-user must ensure the carpet is adhered to the floor and installed as outlined in the ADA standards.

[Installation Guidelines](#)

[Maintenance Guidelines](#)

Specifications are subject to nominal manufacturing variance. Material supply and/or manufacturing processes may necessitate changes without notice.

This product is an exclusive design and may not be duplicated in any manner. Use of this design in the creation of another product design is also strictly prohibited.

Visit [shawcontract.com/testing](https://shawcontract.com/testing) for more information.



**PVC-Free**

Corporate Headquarters +1 800 257 7429 | +1 706 532 7984 | Atlanta +1 404 853 7429 | Bengaluru +91 80 6773 0202 | Beijing +86 10 6568 588 | Chicago +1 312 467 1331 | Dubai +971 4 584 6956 | Hong Kong +852 2623 0371 | Latin America (Miami) +1 305 827 5912 | London +44 207 961 4120 | Los Angeles +1 800 233 1614 | Melbourne +61 3 9939 8543 | Mexico City +55 5010 7600 | Mumbai +91 22 6284 5050 | Nantong +86 400 800 7429 | New York +1 212 953 7429 | Paris +33 (0) 1 81 22 44 39 | San Francisco +1 415 955 1920 | Santiago +562 2431 5000 x 550 | São Paulo +55 11 3071 1702 | Shanghai +86 21 3338 4000 | Singapore +65 6733 1811 | Sydney +61 800 556 302

© 2024 Shaw Industries Group, Inc., a Berkshire Hathaway Company  
November 21, 2024

3 of 3