

Statement

Product Type	Broadloom	
Collection	Living Environments	
Style Number	5A257	
Construction	Textured Loop	
Fibre	Nylon	
Primary Backing	Synthetic	
Secondary Backing	Classicbac®	
Protective Treatments	SSP® Shaw Soil Protection	
Recommended Adhesive	H1000, H1200 or H3800	
	u.s.	metric
Product Size	12 ft	3.66 m
Gauge	5/32 in	25.2 per 10 cm
Stitches	10.0 per in	40.0 per 10 cm
Average Density	5358 oz/yd³	0.198 g/cm³
Kilotex		8.12
Total Thickness	0.338 in	8.59 mm
Tufted Weight	25.3 oz/yd²	857.8 g/m²
Installation Pattern Repeat	1 in x .625 in	2.54 cm x 1.59 cm



Recommended Installation Method

Direct Glue, Double Glue, Stretch-In

Product should be installed in rooms only applications.

When installing in hybrid locations with carpet and resilient, direct glue with LokSeam is recommended.

Data + Testing

Pill Test	Pass
Cri Green Label Plus (Glp)	GLP8878
Ada Compliance	>0.6, Meets the recommended static coefficient of friction for ADA walking surfaces and accessible routes***

Test Reports may be included or listed by the manufacturing/inventory style number as opposed to the noted selling style number.

Coordinating Products

COREtec: **Repose**

Sheet: **Adventure Sheet**

Broadloom: **Scenery, Reimagine, Niche, Novice, Prepare, Noted, Nook, Remedy I, Remedy II, Personable, Prominent, Endeavor, Cocoon, Prolific Solid, Prolific Berber, Enhance Tonal, Enhance Solid, Prosper Ultraloc® MB, Esteem Ultraloc® MB, Remain 45 Oz., Remain 55 Oz., Upscale, Imagery, Sentiment**

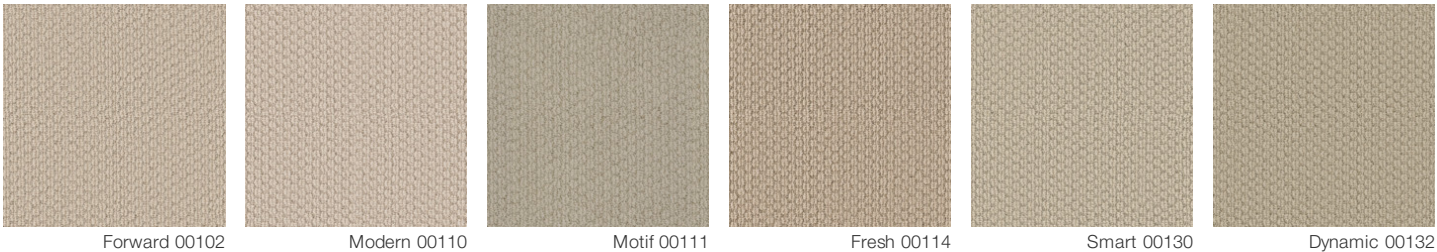
Attributes + Certifications

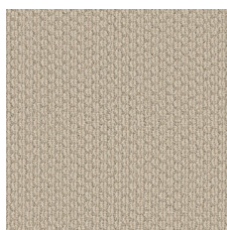
Health & Wellbeing	
Material Ingredient Transparency	Cradle to Cradle Certified® Silver Level (Version 3.1) NSF 140 Gold
Indoor Air Quality	CRI Green Label Plus (GLP) GLP8878
Climate Impact	
Environmental Product Declaration (EPD)	3rd Party Certified in Accordance with ISO14044, ISO14025 & EN15804
Total Recycled Content	<1% (Pre-Consumer <1% Post-Consumer 0%)
Product Packaging	100% Recyclable
Global Product Assessment	CE Marking (EN 14041) 3rd Party Certified Environmental Guarantee* Re[turn] Reclamation Program* Pickup & Delivery Available Country of Origin** USA

Green Leed Contribution Credit

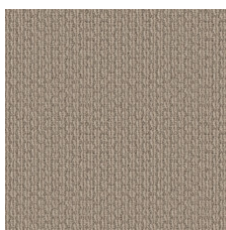
MR Credit: Building Product Disclosure and Optimization Environmental Product Declarations - Option 1: Environmental Product Declaration (EPD)	3rd Party Certified in Accordance with ISO14044, ISO14025 & EN15804
MR Credit: Building Product Disclosure and Optimization Material Ingredients - Option 1: Material Ingredient Reporting	C2C Silver Level (Version 3.1)
MR Credit: Building Product Disclosure and Optimization Material Ingredients - Option 2: Material Ingredient Optimization	C2C Silver Level (Version 3.1)
EQ Credit: Low Emitting Materials Option 1: Product Category Calculations	Green Label Plus Certification: GLP8878

Available Colorways

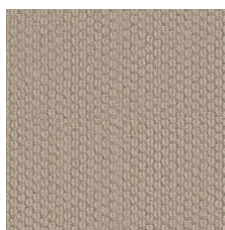




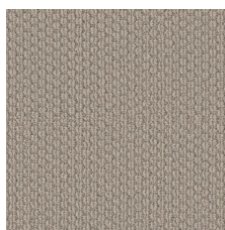
Tenacious 00152



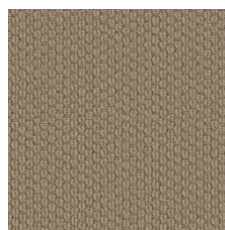
Affection 00154



Insight 00162



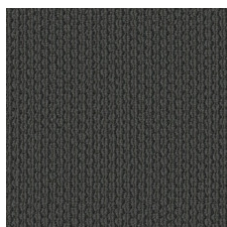
Intuition 00170



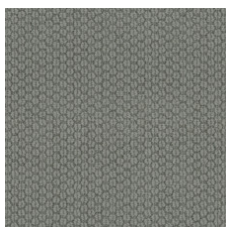
Esteem 00172



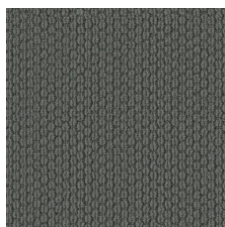
High Regard 00225



Character 00449



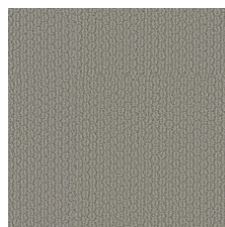
Perspective 00454



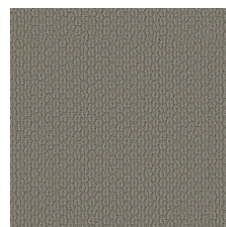
Menagerie 00456



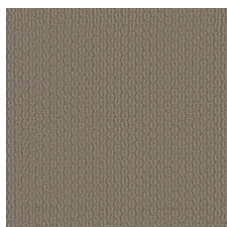
Gallery 00512



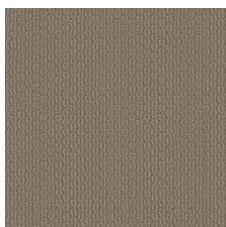
Presence 00523



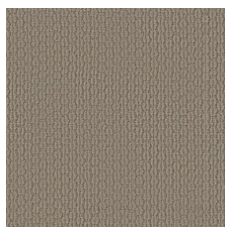
Veranda 00552



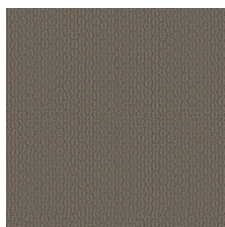
Mezzanine 00557



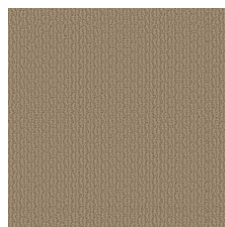
Bespoke 00573



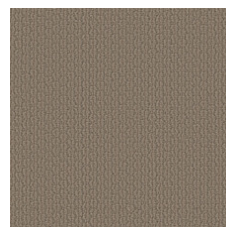
Metaphor 00574



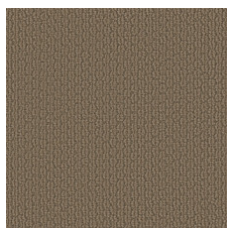
Analogy 00576



Allusion 00724



Simile 00753



Parable 00774

Additional Information

* To learn more about the recyclability of our products and our Environmental Guarantee, please visit shawcontract.com/sustainability.

**Meets or exceeds all local and national regulations in country of manufacture. (Manufactured in an ISO 9001 & ISO 14001 certified facility or equivalent)

***This carpet is manufactured to be ADA compliant, but to be fully ADA compliant, the end-user must ensure the carpet is adhered to the floor and installed as outlined in the ADA standards.

[Installation Guidelines](#)

[Maintenance Guidelines](#)

Specifications are subject to nominal manufacturing variance. Material supply and/or manufacturing processes may necessitate changes without notice.

This product is an exclusive design and may not be duplicated in any manner. Use of this design in the creation of another product design is also strictly prohibited.

Visit shawcontract.com/testing for more information.

