

Embrace

Product Type	Broadloom	
Collection	Community	
Style Number	5A259	
Construction	Multi-Level Pattern/Cut Loop	
Fibre	Ecosolution Q® Nylon	
Dye Method	100% Solution Dyed	
Primary Backing	Synthetic	
Secondary Backing	Ultraloc®	
Protective Treatments	SSP® Shaw Soil Protection	
Recommended Adhesive	1000 Broadloom 4 Gallon or 3800 Indoor Outdoor Broadloom 4 Gallon	
	u.s.	metric
Product Size	12 ft	3.66 m
Gauge	1/10 in	39.4 per 10 cm
Stitches	9.0 per in	36.0 per 10 cm
Finished Pile Thickness	0.227 in	5.77 mm
Average Density	5075 oz/yd³	0.188 g/cm³
Kilotex		8.48
Total Thickness	0.421 in	10.69 mm
Tufted Weight	32 oz/yd²	1085 g/m²
Installation Pattern Repeat	72 in w x 78 in l	182.9 cm w x 198.1 cm l



Recommended Installation Method

Direct Glue, Double Glue, Stretch-In

Data + Testing

Pill Test	Pass
Radiant Panel (Astm E648)	Class I
Nbs Smoke	Less Than 450
Electrostatic Propensity	Less Than 3.5 kv
Cri Green Label Plus (Glp)	GLP2271
Ada Compliance	>0.6, Meets the recommended static coefficient of friction for ADA walking surfaces and accessible routes***

Test Reports may be included or listed by the manufacturing/inventory style number as opposed to the noted selling style number.

Warranties

Lifetime Commercial Limited

Coordinating Products

Carpet Tile: **Knotted Tile, Process Tile, Back Weave Tile, Exchange Tile, Heddle Tile, Flat Weave Tile**

Broadloom: **Share**

Attributes + Certifications

Health & Wellbeing

Material Ingredient Transparency

Cradle to Cradle Certified® | Silver Level (Version 3.1)
Health Product Declaration (HPD) | 1,000 ppm Disclosure
NSF 140 | Gold
CRI Green Label Plus (GLP) | GLP2271

Indoor Air Quality

Climate Impact

Environmental Product Declaration (EPD)

3rd Party Certified in Accordance with ISO14044, ISO14025 & EN15804
11.6 (based upon 27.41 oz face weight) kg CO₂/m²
<1% (Pre-Consumer <1% | Post-Consumer 0%)
100% Recyclable

Embodied Carbon (Cradle to Gate)

Total Recycled Content

Product Packaging

Global Product Assessment

CE Marking (EN 14041) | 3rd Party Certified
Environmental Guarantee* | Re[turn] Reclamation Program* | Pickup & Delivery Available
Country of Origin | USA**

Well V2 Contribution Credit

X08 Hazardous Material Reduction Part 1: Limit Hazardous Materials Optimization – 1 pt

C2C Silver Level (Version 3.1)

X10 Volatile Compound Reduction Part 1 (A): Manage Volatile Organic Compounds (VOCs) Optimization – 1 pt

C2C Silver Level (Version 3.1)

X11 Long Term Emissions Control Part 2: Flooring Optimization – 1 pt

Green Label Plus Certification GLP2271

X13 Enhanced Material Precaution Part 1: Select Optimized Materials Optimization – max 2 pts

C2C Silver Level (Version 3.1)

X14 Material Transparency Part 1: Promote Ingredient Disclosure Optimization – max 2 pts

C2C Silver Level (Version 3.1)

Green Leed Contribution Credit

MR Credit: Building Product Disclosure and Optimization
Environmental Product Declarations - Option 1: Environmental Product Declaration (EPD)

3rd Party Certified in Accordance with ISO14044, ISO14025 & EN15804

MR Credit: Building Product Disclosure and Optimization
Material Ingredients - Option 1: Material Ingredient Reporting

C2C Silver Level (Version 3.1)

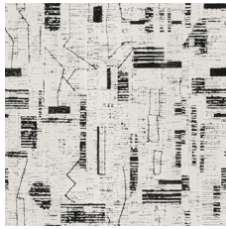
MR Credit: Building Product Disclosure and Optimization
Material Ingredients - Option 2: Material Ingredient Optimization

C2C Silver Level (Version 3.1)

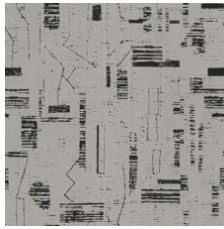
EQ Credit: Low Emitting Materials
Option 1: Product Category Calculations

Green Label Plus Certification: GLP2271

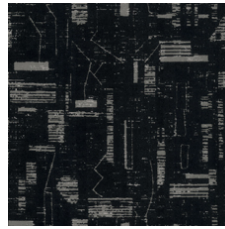
Available Colorways



High Atlas 01100



Tradition 01105



Skoura 01500



Berber 01555



Marrakech 01580

Additional Information

* To learn more about the recyclability of our products and our Environmental Guarantee, please visit shawcontract.com/sustainability.

**Meets or exceeds all local and national regulations in country of manufacture. (Manufactured in an ISO 9001 & ISO 14001 certified facility or equivalent)

***This carpet is manufactured to be ADA compliant, but to be fully ADA compliant, the end-user must ensure the carpet is adhered to the floor and installed as outlined in the ADA standards.

[Installation Guidelines](#)

[Maintenance Guidelines](#)

Specifications are subject to nominal manufacturing variance. Material supply and/or manufacturing processes may necessitate changes without notice.

This product is an exclusive design and may not be duplicated in any manner. Use of this design in the creation of another product design is also strictly prohibited.

Visit shawcontract.com/testing for more information.



PVC-Free

Corporate Headquarters +1 800 257 7429 | +1 706 532 7984 | Atlanta +1 404 853 7429 | Bengaluru +91 80 6773 0202 | Beijing +86 10 6568 588 | Chicago +1 312 467 1331 | Dubai +971 4 584 6956 | Hong Kong +852 2623 0371 | London +44 207 961 4120 | Los Angeles +1 800 233 1614 | Melbourne +61 3 9939 8543 | Mexico City +55 5010 7600 | Mumbai +91 22 6284 5050 | Nantong +86 400 800 7429 | New York +1 212 953 7429 | Paris +33 (0) 1 81 22 44 39 | San Francisco +1 415 955 1920 | Shanghai +86 21 3338 4000 | Singapore +65 6733 1811 | Sydney +61 800 556 302

© 2025 Shaw Industries Group, Inc., a Berkshire Hathaway Company
July 1, 2025

3 of 3