

Embrace

| | | |
|-----------------------------|---|-------------------------|
| Product Type | Broadloom | |
| Collection | Community | |
| Style Number | 5A259 | |
| Construction | Multi-Level Pattern/Cut Loop | |
| Fiber | Ecosolution Q® Nylon | |
| Dye Method | 100% Solution Dyed | |
| Primary Backing | Synthetic | |
| Secondary Backing | Ultraloc® | |
| Protective Treatments | SSP® Shaw Soil Protection | |
| Recommended Adhesive | 1000 Broadloom 4 Gallon or 3800 Indoor Outdoor Broadloom 4 Gallon | |
| | u.s. | metric |
| Product Size | 12 ft | 3.66 m |
| Gauge | 1/10 in | 39.4 per 10 cm |
| Stitches | 9.0 per in | 36.0 per 10 cm |
| Finished Pile Thickness | 0.227 in | 5.77 mm |
| Average Density | 5075 oz/yd³ | 0.188 g/cm³ |
| Kilotex | | 8.48 |
| Total Thickness | 0.421 in | 10.69 mm |
| Tufted Weight | 32 oz/yd² | 1085 g/m² |
| Installation Pattern Repeat | 72 in w x 78 in l | 182.9 cm w x 198.1 cm l |



Recommended Installation Method

Direct Glue, Double Glue, Stretch-In

Data + Testing

| | |
|----------------------------|--|
| Pill Test | Pass |
| Radiant Panel | Class I |
| Nbs Smoke | Less Than 450 |
| Electrostatic Propensity | Less Than 3.5 kv |
| Cri Green Label Plus (Glp) | GLP2271 |
| Ada Compliance | >0.6, Meets the recommended static coefficient of friction for ADA walking surfaces and accessible routes*** |

Test Reports may be included or listed by the manufacturing/inventory style number as opposed to the noted selling style number.

Warranties

Lifetime Commercial Limited

Coordinating Products

COREtec: **Inclusive, Expression**

Carpet Tile: **Knotted Tile, Process Tile, Back Weave Tile, Exchange Tile, Heddle Tile, Flat Weave Tile**

Broadloom: **Share**

Material Health & Environmental Certifications

Health & Wellbeing

| | |
|----------------------------------|--|
| Material Ingredient Transparency | Cradle to Cradle Certified® Silver Level (Version 3.1) Health Product Declaration (HPD) 1,000 ppm Disclosure NSF 140 Gold |
| Indoor Air Quality | CRI Green Label Plus (GLP) GLP2271 |

Climate Impact

| | |
|---|--|
| Environmental Product Declaration (EPD) | 3rd Party Certified in Accordance with ISO14044, ISO14025 & EN15804 |
| Embodied Carbon (Cradle to Gate) | 11.6 (based upon 27.41 oz face weight) kg CO₂/m² |
| Total Recycled Content | <1% (Pre-Consumer <1% Post-Consumer 0%) |
| Product Packaging | 100% Recyclable |

Global Product Assessment

| | |
|--|---|
| | CE Marking (EN 14041) 3rd Party Certified |
| | Environmental Guarantee* Re[turn] Reclamation Program* Pickup & Delivery Available |
| | Country of Origin** USA |

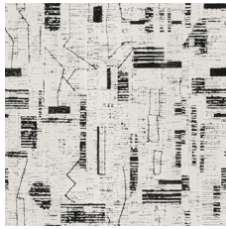
Well V2 Contribution Credit

| | |
|--|---|
| X08 Hazardous Material Reduction Part 1: Limit Hazardous Materials Optimization – 1 pt | C2C Silver Level (Version 3.1) |
| X10 Volatile Compound Reduction Part 1 (A): Manage Volatile Organic Compounds (VOCs) Optimization – 1 pt | C2C Silver Level (Version 3.1) |
| X11 Long Term Emissions Control Part 2: Flooring Optimization – 1 pt | Green Label Plus Certification GLP2271 |
| X13 Enhanced Material Precaution Part 1: Select Optimized Materials Optimization – max 2 pts | C2C Silver Level (Version 3.1) |
| X14 Material Transparency Part 1: Promote Ingredient Disclosure Optimization – max 2 pts | C2C Silver Level (Version 3.1) |

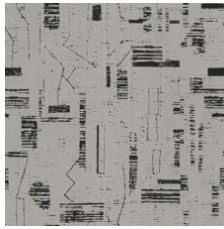
Green Leed Contribution Credit

| | |
|---|--|
| MR Credit: Building Product Disclosure and Optimization Environmental Product Declarations - Option 1: Environmental Product Declaration (EPD) | 3rd Party Certified in Accordance with ISO14044, ISO14025 & EN15804 |
| MR Credit: Building Product Disclosure and Optimization Material Ingredients - Option 1: Material Ingredient Reporting | C2C Silver Level (Version 3.1) |
| MR Credit: Building Product Disclosure and Optimization Material Ingredients - Option 2: Material Ingredient Optimization | C2C Silver Level (Version 3.1) |
| EQ Credit: Low Emitting Materials Option 1: Product Category Calculations | Green Label Plus Certification: GLP2271 |

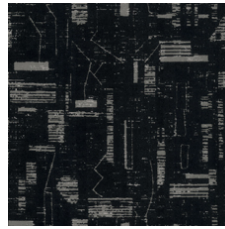
Available Colorways



High Atlas 01100



Tradition 01105



Skoura 01500



Berber 01555



Marrakech 01580

Additional Information

* To learn more about the recyclability of our products and our Environmental Guarantee, please visit shawcontract.com/sustainability.

**Meets or exceeds all local and national regulations in country of manufacture. (Manufactured in an ISO 9001 & ISO 14001 certified facility or equivalent)

***This carpet is manufactured to be ADA compliant, but to be fully ADA compliant, the end-user must ensure the carpet is adhered to the floor and installed as outlined in the ADA standards.

[Installation Guidelines](#)

[Maintenance Guidelines](#)

Specifications are subject to nominal manufacturing variance. Material supply and/or manufacturing processes may necessitate changes without notice.

This product is an exclusive design and may not be duplicated in any manner. Use of this design in the creation of another product design is also strictly prohibited.

Visit shawcontract.com/testing for more information.



PVC-Free