

## Textile

Product Type	<b>Broadloom</b>	
Collection	<b>Suited</b>	
Style Number	<b>5A249</b>	
Construction	<b>Multi-Level Pattern/Cut Loop</b>	
Fibre	<b>Ecosolution Q® Nylon</b>	
Dye Method	<b>100% Solution Dyed</b>	
Primary Backing	<b>Synthetic</b>	
Secondary Backing	<b>Ultraloc®</b>	
Protective Treatments	<b>SSP® Shaw Soil Protection</b>	
Recommended Adhesive	<b>1000 Broadloom 4 Gallon or 3800 Indoor Outdoor Broadloom 4 Gallon</b>	
	u.s.	metric
Product Size	<b>12 ft</b>	<b>3.66 m</b>
Gauge	<b>1/10 in</b>	<b>39.4 per 10 cm</b>
Stitches	<b>9.5 per in</b>	<b>38.5 per 10 cm</b>
Finished Pile Thickness	<b>0.105 in</b>	<b>2.67 mm</b>
Average Density	<b>10286 oz/yd³</b>	<b>0.381 g/cm³</b>
Kilotex		<b>9.02</b>
Total Thickness	<b>0.308 in</b>	<b>7.82 mm</b>
Tufted Weight	<b>30 oz/yd²</b>	<b>1017.2 g/m²</b>
Installation Pattern Repeat	<b>48 in x 35.2 in</b>	<b>121.92 cm x 89.41 cm</b>



## Recommended Installation Method

Direct Glue, Double Glue, Stretch-In

## Data + Testing

Pill Test	<b>Pass</b>
Radiant Panel (Astm E648)	<b>Class I</b>
Nbs Smoke	<b>Less Than 450</b>
Electrostatic Propensity	<b>Less Than 3.5 kv</b>
Cri Green Label Plus (Glp)	<b>GLP2271</b>
Ada Compliance	<b>&gt;0.6, Meets the recommended static coefficient of friction for ADA walking surfaces and accessible routes***</b>

Test Reports may be included or listed by the manufacturing/inventory style number as opposed to the noted selling style number.

## Warranties

Lifetime Commercial Limited

Coordinating Products

Carpet Tile: **Textile Tile, Jacquard Tile, Check Tile, Houndstooth Tile**

Attributes + Certifications

Health & Wellbeing

Material Ingredient Transparency

**Cradle to Cradle Certified® | Silver Level (Version 3.1)**  
**Health Product Declaration (HPD) | 1,000 ppm Disclosure**  
**NSF 140 | Gold**

Indoor Air Quality

**CRI Green Label Plus (GLP) | GLP2271**

Climate Impact

Environmental Product Declaration (EPD)

**3rd Party Certified in Accordance with ISO14044, ISO14025 & EN15804**

Embodied Carbon (Cradle to Gate)

**11.6 (based upon 27.41 oz face weight) kg CO<sub>2</sub>/m<sup>2</sup>**

Total Recycled Content

**<1% (Pre-Consumer <1% | Post-Consumer 0%)**

Product Packaging

**100% Recyclable**

Global Product Assessment

**CE Marking (EN 14041) | 3rd Party Certified**

**Environmental Guarantee\* | Re[turn] Reclamation Program\* | Pickup & Delivery Available**

**Country of Origin\*\* | USA**

Well V2 Contribution Credit

X08 Hazardous Material Reduction Part 1: Limit Hazardous Materials Optimization – 1 pt

**C2C Silver Level (Version 3.1)**

X10 Volatile Compound Reduction Part 1 (A): Manage Volatile Organic Compounds (VOCs) Optimization – 1 pt

**C2C Silver Level (Version 3.1)**

X11 Long Term Emissions Control Part 2: Flooring Optimization – 1 pt

**Green Label Plus Certification GLP2271**

X13 Enhanced Material Precaution Part 1: Select Optimized Materials Optimization – max 2 pts

**C2C Silver Level (Version 3.1)**

X14 Material Transparency Part 1: Promote Ingredient Disclosure Optimization – max 2 pts

**C2C Silver Level (Version 3.1)**

Green Leed Contribution Credit

MR Credit: Building Product Disclosure and Optimization  
Environmental Product Declarations - Option 1: Environmental Product Declaration (EPD)

**3rd Party Certified in Accordance with ISO14044, ISO14025 & EN15804**

MR Credit: Building Product Disclosure and Optimization  
Material Ingredients - Option 1: Material Ingredient Reporting

**C2C Silver Level (Version 3.1)**

MR Credit: Building Product Disclosure and Optimization  
Material Ingredients - Option 2: Material Ingredient Optimization

**C2C Silver Level (Version 3.1)**

EQ Credit: Low Emitting Materials  
Option 1: Product Category Calculations

**Green Label Plus Certification: GLP2271**

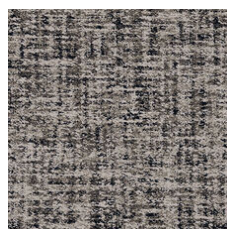
## Available Colorways



Saffron 79210  
LRV 26.2 | L\* 58.23



Bamboo 79375  
LRV 14.7 | L\* 45.17



Denim 79485  
LRV 18.6 | L\* 50.22



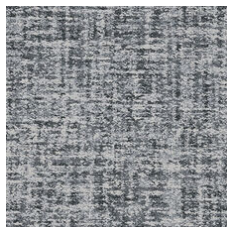
Indigo 79496  
LRV 3 | L\* 20.08



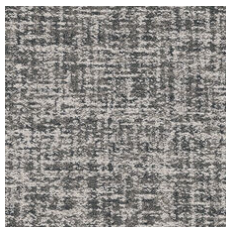
Merino 79500  
LRV 15.3 | L\* 46.02



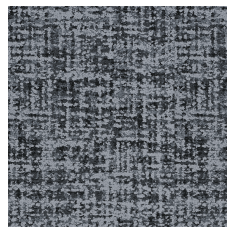
Patent 79505  
LRV 3.1 | L\* 20.59



Cotton 79515  
LRV 22.7 | L\* 54.78



Muslin 79516  
LRV 27.5 | L\* 59.41



Mohair 79530  
LRV 8.6 | L\* 35.22



Wool 79535  
LRV 13.6 | L\* 43.63



Flax 79557  
LRV 10.5 | L\* 38.76



Angora 79596  
LRV 7.2 | L\* 32.26

## Additional Information

\* To learn more about the recyclability of our products and our Environmental Guarantee, please visit [shawcontract.com/sustainability](https://shawcontract.com/sustainability).

\*\*Meets or exceeds all local and national regulations in country of manufacture. (Manufactured in an ISO 9001 & ISO 14001 certified facility or equivalent)

\*\*\*This carpet is manufactured to be ADA compliant, but to be fully ADA compliant, the end-user must ensure the carpet is adhered to the floor and installed as outlined in the ADA standards.

[Installation Guidelines](#)

[Maintenance Guidelines](#)

Specifications are subject to nominal manufacturing variance. Material supply and/or manufacturing processes may necessitate changes without notice.

This product is an exclusive design and may not be duplicated in any manner. Use of this design in the creation of another product design is also strictly prohibited.

Visit [shawcontract.com/testing](https://shawcontract.com/testing) for more information.



**PVC-Free**

Corporate Headquarters +1 800 257 7429 | +1 706 532 7984 | Atlanta +1 404 853 7429 | Bengaluru +91 80 6773 0202 | Beijing +86 10 6568 588 | Chicago +1 312 467 1331 | Dubai +971 4 584 6956 | Hong Kong +852 2623 0371 | London +44 207 961 4120 | Los Angeles +1 800 233 1614 | Melbourne +61 3 9939 8543 | Mexico City +55 5010 7600 | Mumbai +91 22 6284 5050 | Nantong +86 400 800 7429 | New York +1 212 953 7429 | Paris +33 (0) 1 81 22 44 39 | San Francisco +1 415 955 1920 | Shanghai +86 21 3338 4000 | Singapore +65 6733 1811 | Sydney +61 800 556 302

© 2025 Shaw Industries Group, Inc., a Berkshire Hathaway Company  
July 1, 2025

3 of 3