

Swerve

Nom De Style	Rouleaux
Numéro De Style	5A275
Construction	Motif à Plusieurs Niveaux/Boucle De Coupe
Fibre	Ecosolution Q® Nylon
Méthode De Teinture	100% Teint EN Solution
Endos Primaire	Synthétique
Endos Secondaire	Ultraloc®
Traitements Protecteur	Protection Des Sols SSP® Shaw

	u.s.	metric
Dimensions Du Produit	12 ft	3.66 m
Jauge	1/10 in	39.4 per 10 cm
Compte De Mailles	10.0 per in	39.0 per 10 cm
Densité	5786 oz/yd³	0.214 g/cm³
Kilotex		9.06
Poids De La Fibre Touffetée	0.380 in	9.65 mm
Poids De La Fibre Touffetée	36 oz/yd²	1220.6 g/m²
Répéter Le Schéma d'Installation	144 in w x 144 in l	3.66 m w x 3.66 m l



Méthodes d'Installation Conseillées

Direct Glue, Double Glue, Stretch-In

Product is recommended for areas with light to moderate traffic only.

Spécifications Du Rendement + Tests Et Essai

Inflammabilité	Pass
Essai Au Panneau Radiant (Astm E648)	Class I
Densité Du Fumée	Less Than 450
Statique	Less Than 3.5 kv
Label Cri Green Label Plus (Glp)	GLP2271
Ada Conformité	≥0.6, conforme au coefficient de frottement statique pour les surfaces de passage et d'accessibilité simplifiée (ADA).***

Test Reports may be included or listed by the manufacturing/inventory style number as opposed to the noted selling style number.

Attributs + Certifications

Health & Wellbeing

Material Ingredient Transparency

Indoor Air Quality

Cradle to Cradle Certified® | Niveau Argent (Version 3.1)
NSF 140 | or
CRI Green Label Plus (GLP) | GLP2271

Climate Impact

Environmental Product Declaration (EPD)

Total Recycled Content

Product Packaging

Certifié Par Une Tierce Partie Conformément Aux Normes ISO 14044,
ISO 14025 Et EN 15804
<1% (Pre-Consumer <1% | Post-Consumer 0%)
100% Recyclable

Global Product Assessment

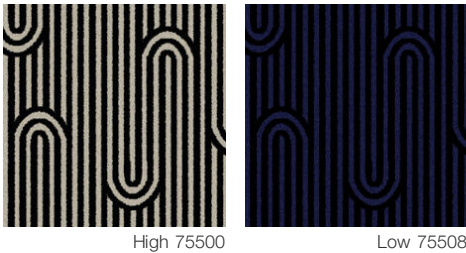
CE Marking (EN 14041) | Certifié Par Un Tiers
Environmental Guarantee* | Re[turn] Reclamation Program* | Pickup &
Delivery Available
Country of Origin** | Imported

Contribution Au Certificat Vert Leed

- « Crédit MR : Divulgation et optimisation des produits de construction
- « Crédit MR : Divulgation et optimisation des produits de construction
- « Crédit MR : Divulgation et optimisation des produits de construction
- Crédit EQ : matériaux faibles émissions

3rd Party Certified in Accordance with ISO14044, ISO14025 & EN15804
C2C Silver Level (Version 3.1)
C2C Silver Level (Version 3.1)
Green Label Plus Certification: GLP2271

Available Colorways



Informations Supplémentaires

* To learn more about the recyclability of our products and our Environmental Guarantee, please visit shawcontract.com/sustainability.

**Meets or exceeds all local and national regulations in country of manufacture. (Manufactured in an ISO 9001 & ISO 14001 certified facility or equivalent)

***This carpet is manufactured to be ADA compliant, but to be fully ADA compliant, the end-user must ensure the carpet is adhered to the floor and installed as outlined in the ADA standards.

[Installation Guidelines](#)

[Maintenance Guidelines](#)

Specifications are subject to nominal manufacturing variance. Material supply and/or manufacturing processes may necessitate changes without notice.

This product is an exclusive design and may not be duplicated in any manner. Use of this design in the creation of another product design is also strictly prohibited.

Visit shawcontract.com/testing for more information.



Corporate Headquarters +1 800 257 7429 | +1 706 532 7984 | Atlanta +1 404 853 7429 | Bengaluru +91 80 6773 0202 | Beijing +86 10 6568 588 | Chicago +1 312 467 1331 | Dubai +971 4 584 6956 | Hong Kong +852 2623 0371 | Latin America (Miami) +1 305 827 5912 | London +44 207 961 4120 | Los Angeles +1 800 233 1614 | Melbourne +61 3 9939 8543 | Mexico City +55 5010 7600 | Mumbai +91 22 6284 5050 | Nantong +86 400 800 7429 | New York +1 212 953 7429 | Paris +33 (0) 1 81 22 44 39 | San Francisco +1 415 955 1920 | Santiago +562 2431 5000 x 550 | São Paulo +55 11 3071 1702 | Shanghai +86 21 3338 4000 | Singapore +65 6733 1811 | Sydney +61 800 556 302