

Share

| | | |
|--------------------------------------|--|-------------------------|
| Tipo De Producto | Alfombra EN Rollo | |
| Colección | Community | |
| Número De Estilo | 5A260 | |
| Construcción | Patrón Multi Niveles Cortado/Buclé | |
| Fibra | Ecosolution Q® Nylon | |
| Método De Teñido | 100% Solution Dyed | |
| Base Primaria | Sintético | |
| Base Secundaria | Ultraloc® | |
| Tratamientos | SSP® Shaw Protección Para El Piso | |
| Protectores | | |
| Adhesivo | 1000 Broadloom 4 Gallon or 3800 Indoor | |
| Recomendado | Outdoor Broadloom 4 Gallon | |
| | u.s. | metric |
| Tamaño Del Producto | 12 ft | 3.66 m |
| Gauge | 1/11 in | 43.3 per 10 cm |
| Puntadas | 11.0 per in | 43.0 per 10 cm |
| Espesor De La Fibra Terminada | 0.214 in | 5.44 mm |
| Densidad Media | 7065 oz/yd³ | 0.261 g/cm³ |
| Kilotex | | 11.24 |
| Espesor Total | 0.404 in | 10.26 mm |
| Peso De La Fibra | 42 oz/yd² | 1424 g/m² |
| Repetición Del Patrón De Instalación | 72 in w x 70.25 in l | 182.9 cm w x 178.4 cm l |



Método De Instalación Recomendado

Direct Glue, Double Glue, Stretch-In

Datos + Pruebas

| | |
|----------------------------|---|
| Prueba De Pastillas (Pill) | Pass |
| Panel Radiante (Astm E648) | Class I |
| Nbs Humo | Less Than 450 |
| Propensión Electrostática | Less Than 3.5 kv |
| Cri Green Label Plus (Glp) | GLP2271 |
| Ada Compliance | ≥0.6, Cumple con las recomendaciones para el coeficiente de fricción estática para superficies transitables ADA y rutas accesibles*** |

Test Reports may be included or listed by the manufacturing/inventory style number as opposed to the noted selling style number.

Garantías

Vitalicio Limitado A USo Comercial

Productos Que Combinan

COREtec: **Inclusive, Expression**
Carpet Tile: **Knotted Tile, Process Tile, Back Weave Tile, Exchange Tile, Heddle Tile, Flat Weave Tile**
Broadloom: **Embrace**

Atributos + Certificaciones

Health & Wellbeing

Material Ingredient Transparency

Cradle to Cradle Certified® | Nivel Plata (Versión 3.1)
Health Product Declaration (HPD) | Divulgado 1,000 ppm
NSF 140 | Oro

Indoor Air Quality

CRI Green Label Plus (GLP) | GLP2271

Climate Impact

Environmental Product Declaration (EPD)

Certificado Tercerizado De Acuerdo Con La Norma ISO14044,
ISO14025 & EN15804

Embodied Carbon (Cradle to Gate)

11.6 (based upon 27.41 oz face weight) kg CO₂/m²

Total Recycled Content

<1% (Pre-Consumer <1% | Post-Consumer 0%)

Product Packaging

100% Recyclable

Global Product Assessment

CE Marking (EN 14041) | Certificado Tercerizado
Environmental Guarantee* | Re[turn] Reclamation Program* | Pickup &
Delivery Available
Country of Origin** | Imported

Well V2 Contribution Credit

X08 Hazardous Material Reduction Part 1: Limit Hazardous Materials
Optimization – 1 pt

C2C Nivel Plata (Versión 3.1)

X10 Volatile Compound Reduction Part 1 (A): Manage Volatile Organic
Compounds (VOCs) Optimization – 1 pt

C2C Nivel Plata (Versión 3.1)

X11 Long Term Emissions Control Part 2: Flooring Optimization – 1 pt

Green Label Plus Certification GLP2271

X13 Enhanced Material Precaution Part 1: Select Optimized Materials
Optimization – max 2 pts

C2C Nivel Plata (Versión 3.1)

X14 Material Transparency Part 1: Promote Ingredient Disclosure
Optimization – max 2 pts

C2C Nivel Plata (Versión 3.1)

Contribución Para Créditos Leed

Crédito MR: Divulgación y optimización de productos de construcción
Declaraciones ambientales de productos - Opción 1: Declaración ambiental
de productos (EPD)

3rd Party Certified in Accordance with ISO14044, ISO14025 & EN15804

Crédito MR: Divulgación y optimización de productos de construcción
Ingredientes de materiales - Opción 1: Informe de ingredientes de los
materiales

C2C Nivel Plata (Versión 3.1)

Crédito MR: Divulgación y optimización de productos de construcción
Ingredientes de materiales - Opción 2: Optimización de ingredientes de los
materiales

C2C Nivel Plata (Versión 3.1)

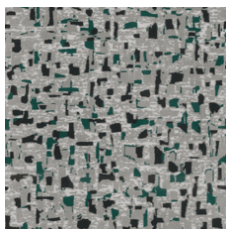
Crédito EQ: Materiales de baja emisión
Opción 1: Cálculos de categoría de producto

Certificación Green Label Plus: GLP2271

Available Colorways



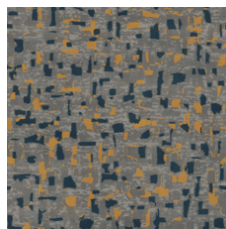
Empathy 01100



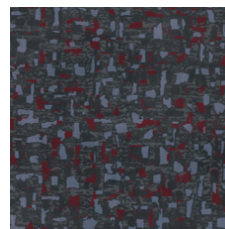
Engage 01105



Harmony 01500



Identity 01555



Inclusive 01580

Información Adicional

* To learn more about the recyclability of our products and our Environmental Guarantee, please visit shawcontract.com/sustainability.

**Meets or exceeds all local and national regulations in country of manufacture. (Manufactured in an ISO 9001 & ISO 14001 certified facility or equivalent)

***This carpet is manufactured to be ADA compliant, but to be fully ADA compliant, the end-user must ensure the carpet is adhered to the floor and installed as outlined in the ADA standards.

[Installation Guidelines](#)

[Maintenance Guidelines](#)

Specifications are subject to nominal manufacturing variance. Material supply and/or manufacturing processes may necessitate changes without notice.

This product is an exclusive design and may not be duplicated in any manner. Use of this design in the creation of another product design is also strictly prohibited.

Visit shawcontract.com/testing for more information.



PVC-Free

Corporate Headquarters +1 800 257 7429 | +1 706 532 7984 | Atlanta +1 404 853 7429 | Bengaluru +91 80 6773 0202 | Beijing +86 10 6568 588 | Chicago +1 312 467 1331 | Dubai +971 4 584 6956 | Hong Kong +852 2623 0371 | London +44 207 961 4120 | Los Angeles +1 800 233 1614 | Melbourne +61 3 9939 8543 | Mexico City +55 5010 7600 | Mumbai +91 22 6284 5050 | Nantong +86 400 800 7429 | New York +1 212 953 7429 | Paris +33 (0) 1 81 22 44 39 | San Francisco +1 415 955 1920 | Shanghai +86 21 3338 4000 | Singapore +65 6733 1811 | Sydney +61 800 556 302

© 2025 Shaw Industries Group, Inc., a Berkshire Hathaway Company
June 27, 2025

3 of 3