

Share

Nom De Style	Rouleaux
Collection	Community
Numéro De Style	5A260
Construction	Motif à Plusieurs Niveaux/Boucle De Coupe
Fibre	Ecosolution Q® Nylon
Méthode De Teinture	100% Teint EN Solution
Endos Primaire	Synthétique
Endos Secondaire	Ultraloc®
Traitements Protecteur	Protection Des Sols SSP® Shaw
Adhésif Recommandé	1000 Broadloom or 3800 Indoor Outdoor Broadloom

	u.s.	metric
Dimensions Du Produit	12 ft	3.66 m
Jauge	1/11 in	43.3 per 10 cm
Compte De Mailles	11.0 per in	43.0 per 10 cm
Épaisseur Fini	0.214 in	5.44 mm
Densité	7065 oz/yd³	0.261 g/cm³
Kilotex		11.24
Poids De La Fibre Touffetée	0.404 in	10.26 mm
Poids De La Fibre Touffetée	42 oz/yd²	1424 g/m²
Répéter Le Schéma d'Installation	72 in w x 70.25 in l	182.9 cm w x 178.4 cm l



Méthodes d'Installation Conseillées

Direct Glue, Double Glue, Stretch-In

Spécifications Du Rendement + Tests Et Essai

Inflamabilité	Pass
Essai Au Panneau Radiant (Astm E648)	Class I
Densité Du Fumée	Less Than 450
Statique	Less Than 3.5 kv
Label Cri Green Label Plus (Glp)	GLP2271
Ada Conformité	≥0.6, conforme au coefficient de frottement statique pour les surfaces de passage et d'accessibilité simplifiée (ADA).***

Test Reports may be included or listed by the manufacturing/inventory style number as opposed to the noted selling style number.

Garanties

Commerciale Limitée

Coordination Des Produits

COREtec: **Inclusive, Expression**

Carpet Tile: **Knotted Tile, Process Tile, Back Weave Tile, Exchange Tile, Heddle Tile, Flat Weave Tile**

Broadloom: **Embrace**

Attributs + Certifications

Health & Wellbeing

Material Ingredient Transparency	Cradle to Cradle Certified® Niveau Argent (Version 3.1) Health Product Declaration (HPD) Divulgateion De 1 000 ppm NSF 140 or
Indoor Air Quality	CRI Green Label Plus (GLP) GLP2271
Climate Impact	
Environmental Product Declaration (EPD)	Certifié Par Une Tierce Partie Conformément Aux Normes ISO 14044, ISO 14025 Et EN 15804
Embodied Carbon (Cradle to Gate)	11.6 (based upon 27.41 oz face weight) kg CO₂/m²
Total Recycled Content	<1% (Pre-Consumer <1% Post-Consumer 0%)
Product Packaging	100% Recyclable
Global Product Assessment	CE Marking (EN 14041) Certifié Par Un Tiers Environmental Guarantee* Re[turn] Reclamation Program* Pickup & Delivery Available Country of Origin** Imported

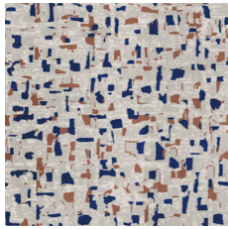
Well V2 Contribution Credit

X08 Réduction des matières dangereuses Partie 1 : Optimisation des limites des matières dangereuses – 1 pt	C2C Silver Level (Version 3.1)
X10 Réduction des composés volatils Partie 1 (A) : Gérer l'optimisation des composés organiques volatils (COV) - 1 pt	C2C Silver Level (Version 3.1)
X11 Contrôle des émissions à long terme Partie 2 : Optimisation des revêtements de sol – 1 pt	Green Label Plus Certification GLP2271
X13 Enhanced Material Precaution Part 1: Select Optimized Materials Optimization - max 2 pts	C2C Silver Level (Version 3.1)
X14 Transparence des matériaux Partie 1 : Promouvoir l'optimisation de la divulgation des ingrédients - max 2 pts	C2C Silver Level (Version 3.1)

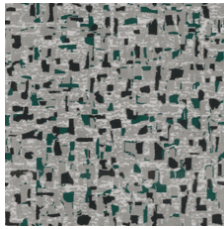
Contribution Au Certificat Vert Leed

« Crédit MR : Divulgateion et optimisation des produits de construction	3rd Party Certified in Accordance with ISO14044, ISO14025 & EN15804
« Crédit MR : Divulgateion et optimisation des produits de construction	C2C Silver Level (Version 3.1)
« Crédit MR : Divulgateion et optimisation des produits de construction	C2C Silver Level (Version 3.1)
Crédit EQ : matériaux faibles émissions	Green Label Plus Certification: GLP2271

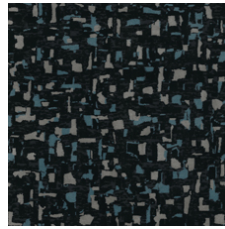
Available Colorways



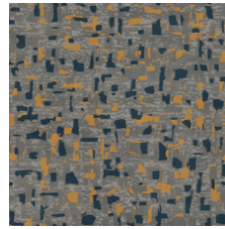
Empathy 01100



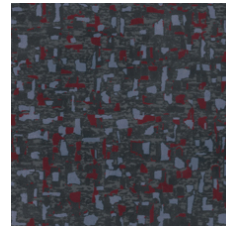
Engage 01105



Harmony 01500



Identity 01555



Inclusive 01580

Informations Supplémentaires

* To learn more about the recyclability of our products and our Environmental Guarantee, please visit shawcontract.com/sustainability.

**Meets or exceeds all local and national regulations in country of manufacture. (Manufactured in an ISO 9001 & ISO 14001 certified facility or equivalent)

***This carpet is manufactured to be ADA compliant, but to be fully ADA compliant, the end-user must ensure the carpet is adhered to the floor and installed as outlined in the ADA standards.

[Installation Guidelines](#)

[Maintenance Guidelines](#)

Specifications are subject to nominal manufacturing variance. Material supply and/or manufacturing processes may necessitate changes without notice.

This product is an exclusive design and may not be duplicated in any manner. Use of this design in the creation of another product design is also strictly prohibited.

Visit shawcontract.com/testing for more information.



PVC-Free

Corporate Headquarters +1 800 257 7429 | +1 706 532 7984 | Atlanta +1 404 853 7429 | Bengaluru +91 80 6773 0202 | Beijing +86 10 6568 588 | Chicago +1 312 467 1331 | Dubai +971 4 584 6956 | Hong Kong +852 2623 0371 | London +44 207 961 4120 | Los Angeles +1 800 233 1614 | Melbourne +61 3 9939 8543 | Mexico City +55 5010 7600 | Mumbai +91 22 6284 5050 | Nantong +86 400 800 7429 | New York +1 212 953 7429 | Paris +33 (0) 1 81 22 44 39 | San Francisco +1 415 955 1920 | Shanghai +86 21 3338 4000 | Singapore +65 6733 1811 | Sydney +61 800 556 302

© 2025 Shaw Industries Group, Inc., a Berkshire Hathaway Company
July 29, 2025

3 of 3