

Ribbons

Product Type	Broadloom	
Style Number	5A266	
Construction	Multi-Level Pattern/Cut Loop	
Fiber	Ecosolution Q® Nylon	
Dye Method	100% Solution Dyed	
Primary Backing	Synthetic	
Secondary Backing	Ultraloc®	
Protective Treatments	SSP® Shaw Soil Protection	
	u.s.	metric
Product Size	12 ft	3.66 m
Gauge	1/11 in	43.3 per 10 cm
Stitches	11.0 per in	43.0 per 10 cm
Finished Pile Thickness	0.265 in	6.73 mm
Average Density	5977 oz/yd³	0.221 g/cm³
Kilotex		11.02
Total Thickness	0.420 in	10.67 mm
Tufted Weight	44 oz/yd²	1491.9 g/m²
Installation Pattern Repeat	72 in w x 84 in l	1.82 m w x 2.13 m l



Recommended Installation Method

Direct Glue, Double Glue, Stretch-In

Product is recommended for areas with light to moderate traffic only.

Data + Testing

Pill Test	Pass
Radiant Panel	Class I
Nbs Smoke	Less Than 450
Electrostatic Propensity	Less Than 3.5 kv
Cri Green Label Plus (Glp)	GLP2271
Ada Compliance	>0.6, Meets the recommended static coefficient of friction for ADA walking surfaces and accessible routes***

Test Reports may be included or listed by the manufacturing/inventory style number as opposed to the noted selling style number.

Material Health & Environmental Certifications

Health & Wellbeing

Material Ingredient Transparency

Cradle to Cradle Certified® | Silver Level (Version 3.1)
NSF 140 | Gold

Indoor Air Quality

CRI Green Label Plus (GLP) | GLP2271

Climate Impact

Environmental Product Declaration (EPD)

3rd Party Certified in Accordance with ISO14044, ISO14025 & EN15804

Total Recycled Content

<1% (Pre-Consumer <1% | Post-Consumer 0%)

Product Packaging

100% Recyclable

Global Product Assessment

CE Marking (EN 14041) | 3rd Party Certified

Environmental Guarantee* | Re[turn] Reclamation Program* | Pickup & Delivery Available

Country of Origin** | USA

Well V2 Contribution Credit

X08 Hazardous Material Reduction Part 1: Limit Hazardous Materials Optimization – 1 pt

C2C Silver Level (Version 3.1)

X10 Volatile Compound Reduction Part 1 (A): Manage Volatile Organic Compounds (VOCs) Optimization – 1 pt

C2C Silver Level (Version 3.1)

X11 Long Term Emissions Control Part 2: Flooring Optimization – 1 pt

Green Label Plus Certification GLP2271

X13 Enhanced Material Precaution Part 1: Select Optimized Materials Optimization – max 2 pts

C2C Silver Level (Version 3.1)

X14 Material Transparency Part 1: Promote Ingredient Disclosure Optimization – max 2 pts

C2C Silver Level (Version 3.1)

Green Leed Contribution Credit

MR Credit: Building Product Disclosure and Optimization
Environmental Product Declarations - Option 1: Environmental Product Declaration (EPD)

3rd Party Certified in Accordance with ISO14044, ISO14025 & EN15804

MR Credit: Building Product Disclosure and Optimization
Material Ingredients - Option 1: Material Ingredient Reporting

C2C Silver Level (Version 3.1)

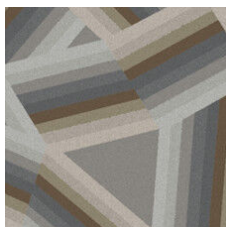
MR Credit: Building Product Disclosure and Optimization
Material Ingredients - Option 2: Material Ingredient Optimization

C2C Silver Level (Version 3.1)

EQ Credit: Low Emitting Materials
Option 1: Product Category Calculations

Green Label Plus Certification: GLP2271

Available Colorways



Shine 66155

Additional Information

* To learn more about the recyclability of our products and our Environmental Guarantee, please visit shawcontract.com/sustainability.

**Meets or exceeds all local and national regulations in country of manufacture. (Manufactured in an ISO 9001 & ISO 14001 certified facility or equivalent)

***This carpet is manufactured to be ADA compliant, but to be fully ADA compliant, the end-user must ensure the carpet is adhered to the floor and installed as outlined in the ADA standards.

[Installation Guidelines](#)

[Maintenance Guidelines](#)

Specifications are subject to nominal manufacturing variance. Material supply and/or manufacturing processes may necessitate changes without notice.

This product is an exclusive design and may not be duplicated in any manner. Use of this design in the creation of another product design is also strictly prohibited.

Visit shawcontract.com/testing for more information.



PVC-Free

Corporate Headquarters +1 800 257 7429 | +1 706 532 7984 | Atlanta +1 404 853 7429 | Bengaluru +91 80 6773 0202 | Beijing +86 10 6568 588 | Chicago +1 312 467 1331 | Dubai +971 4 584 6956 | Hong Kong +852 2623 0371 | Latin America (Miami) +1 305 827 5912 | London +44 207 961 4120 | Los Angeles +1 800 233 1614 | Melbourne +61 3 9939 8543 | Mexico City +55 5010 7600 | Mumbai +91 22 6284 5050 | Nantong +86 400 800 7429 | New York +1 212 953 7429 | Paris +33 (0) 1 81 22 44 39 | San Francisco +1 415 955 1920 | Santiago +562 2431 5000 x 550 | São Paulo +55 11 3071 1702 | Shanghai +86 21 3338 4000 | Singapore +65 6733 1811 | Sydney +61 800 556 302